

**ERGOLINE**  
YOUR GUIDE TO THE SUN

[ERGOLINE.DE/EN](https://ergoline.de/en)

*Ergoline*



## **VISIONARY TECHNOLOGY** FOR A SUCCESSFUL FUTURE

For more than 30 years, the most popular sunbed brand has been delighting its customers with innovative UV and light technologies. From UV-free skincare to hybrid treatments, right up to conventional tanning with and without skin sensors, Ergoline has the right device to suit all users' needs. No matter which product you go for, you will always be on the safe side if you invest in the best of the best.



## **ERGOLINE SPECTRA**

### THE WORLD'S FIRST LED FACIAL TECHNOLOGY BY ERGOLINE

Welcome to Ergoline Spectra. A new era in UV and light technology. The LED facial tanner reduces power consumption by 2,000 watts, has a 20,000 hour life time and delivers a better tanning performance than ever before. Plus, undesirable infrared radiation is reduced.

Ergoline Spectra. For the ultimate, gentlest tanning experience ever. Experience the new spectra of light!



# COMPLETE COMFORT

## SOFT

Tanning with Spectra is more gentle to the skin than any other conventional sunbed using high pressure technology, thanks to the reduction in infrared radiation. For a beautiful natural tan, eliminating skin stress and redness.

## GENTLE

Too much infrared breaks down collagen and is a factor in skin aging. The lower heat development protects the skin and makes the Beauty Light more efficient.

## QUIET

Reduced ventilation noise, particularly in the facial area, ensures a quieter tanning session. This enables the whole Spectra tanning experience to be quieter, calmer and even more relaxing.

## COMFORTABLE

Spectra is the new Prestige series benchmark for quiet and gentle yet supremely effective tanning. Even the unpleasant shutdown of the high pressure lamps at the end of the tanning session is now a thing of the past. Spectra. A completely new tanning experience.



# OPTIMISED TAN

## CONSISTENT RESULTS

The Spectra LED technology enables a more homogenous distribution of sunlight eliminating hotspots. For an even and effective tan over the entire facial area.

## OPTIMISED SPECTRUM OF EFFICACY

The optimised spectrum of UVA LEDs and UVB spaghetti-lamps improves tanning results without the need for higher UV output.

## CONSISTENT HIGH PERFORMANCE

Say good-bye to reduced performance in aging facial high pressure lamps. The tanning performance of the high-power LEDs remains virtually constant throughout the entire life time.

# SPECTRA THE NEW TANNING EXPERIENCE

## Because our skin deserves the best.

Conventional high-pressure facials generate UV as well as a high dose of infrared radiation. Too much infrared radiation leads to redness and skin tension after sunbathing. With Ergoline Spectra, only the desired light spectra are generated. UVA LEDs produce an instantly visible tan. Spaghetti lamps complement the light spectrum with UVB. The optimised light spectrum delivers a gentle, comfortable and effective tanning experience unlike anything experienced before.

# AN INVESTMENT, WHICH PAYS OFF

## POWER CONSUMPTION REDUCED BY 2,000 WATTS

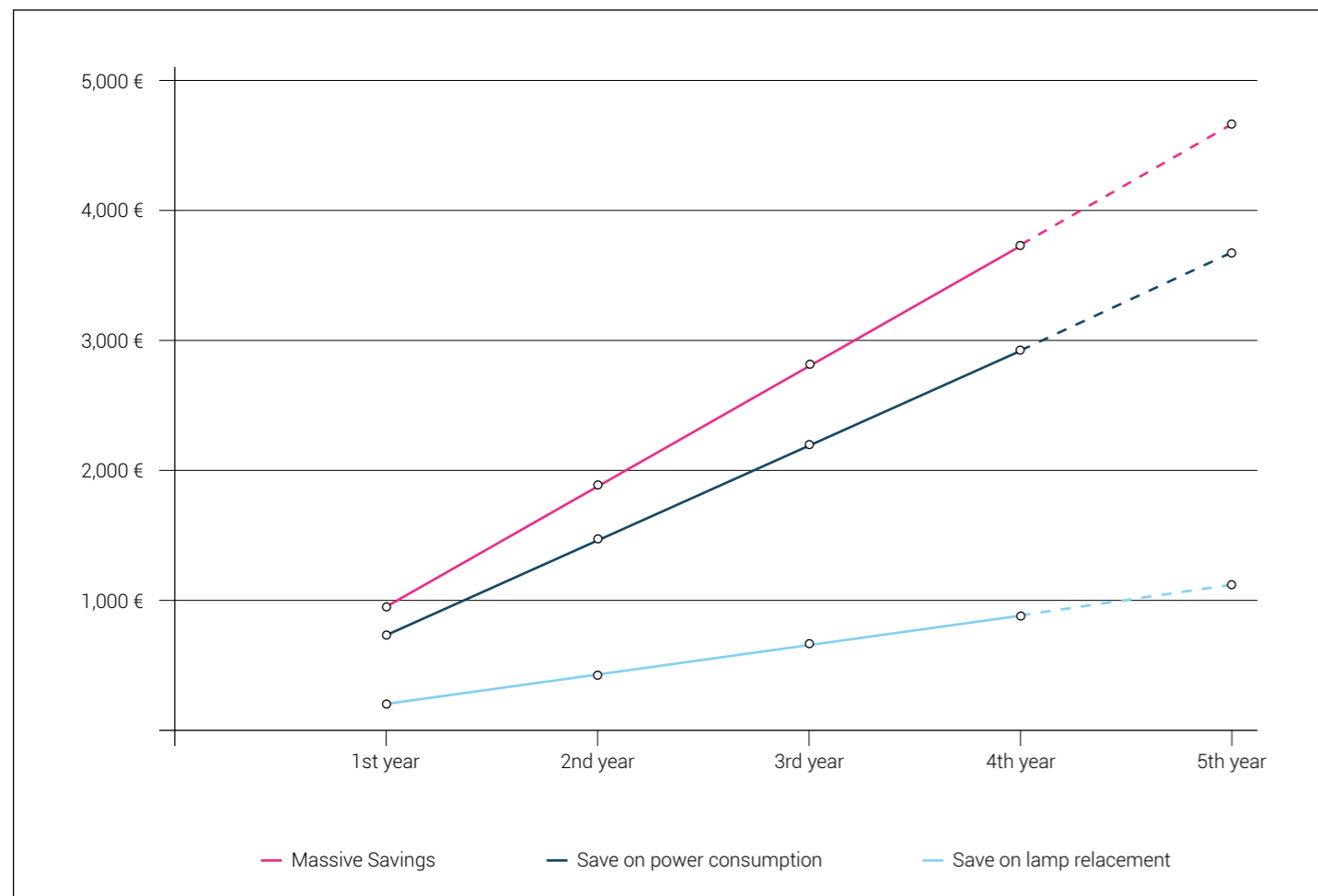
Ergoline's new Spectra LED technology generates the desired light spectra for delivering optimum tanning results but with a 2,000 watts reduction in power consumption compared to conventional 420 watt facials. This represents a saving of 17 cents per 20-minutes tanning session, using an average price of 0.25 Euro per kW.

With, say, 12 customers a day, this represents a saving of 730 Euros a year. That equates to a saving of over 2,900 Euros during a 4-year lease.

## NEVER CHANGE HIGH PRESSURE LAMPS AGAIN

Conventional high pressure lamps must be replaced every 800 hours, as there is a significant drop in performance. Thanks to an intelligent cooling system, the high performance LEDs offer a lifetime of 20,000 hours – without any noticeable loss in performance. With Spectra, changing high pressure lamps becomes a thing of the past. With an average of 12 customers a day, this equates to a saving of around 900 Euros during a 4-year leasing period (excluding any labour costs).

## SAVE MONEY OVER THE LEASE TERM



Thanks to the reduced power consumption and elimination of the need to replace lamps, Spectra can save approx. 3,800 Euros in the first 4 years. And with rising electricity prices, the potential to save more is even greater. In addition to these savings, the innovative Spectra technology can be marketed to generate additional salon footfall and per session revenue. That has to be good for salon profits!





# SUN ANGEL SPECTRA

## INDIVIDUAL HYBRID TECHNOLOGY



## TANNING WITH CONFIDENCE

The Sun Angel is the only sunbed in the world with an integrated skin sensor representing sensor-safe sunbathing, proven vitamin D formation and beautiful tanning results. For the first time with the introduction of Spectra, the UVA dose is infinitely variable and can therefore adapt precisely to the measurement results of each individual user. This is maintained as a constant throughout the entire tanning session.

The tanning result is more efficient, especially for lighter skin types. The UV spectrum of the Sun Angel Spectra is supplemented with skin caring Beauty Light. This new holistic light application, "Beauty Sunshine" prepares the skin for tanning and delivers effective skincare during and after the tanning session for a natural tan and fresh complexion. The bright light is a great energy booster and antidote for the winter blues!

### HIGHLIGHTS

- Spectra LED Facial Tanner
- Over 200 Beauty Light LEDs
- Hybrid LED Shoulder Tan
- Integrated Skin Sensor
- Four light programs
- Proven effect for Vitamin D
- E.V.A. Voice Control
- Touch display with Video function
- Fully equipped as standard
- Certified by Medical Active (DE/AT/CH)



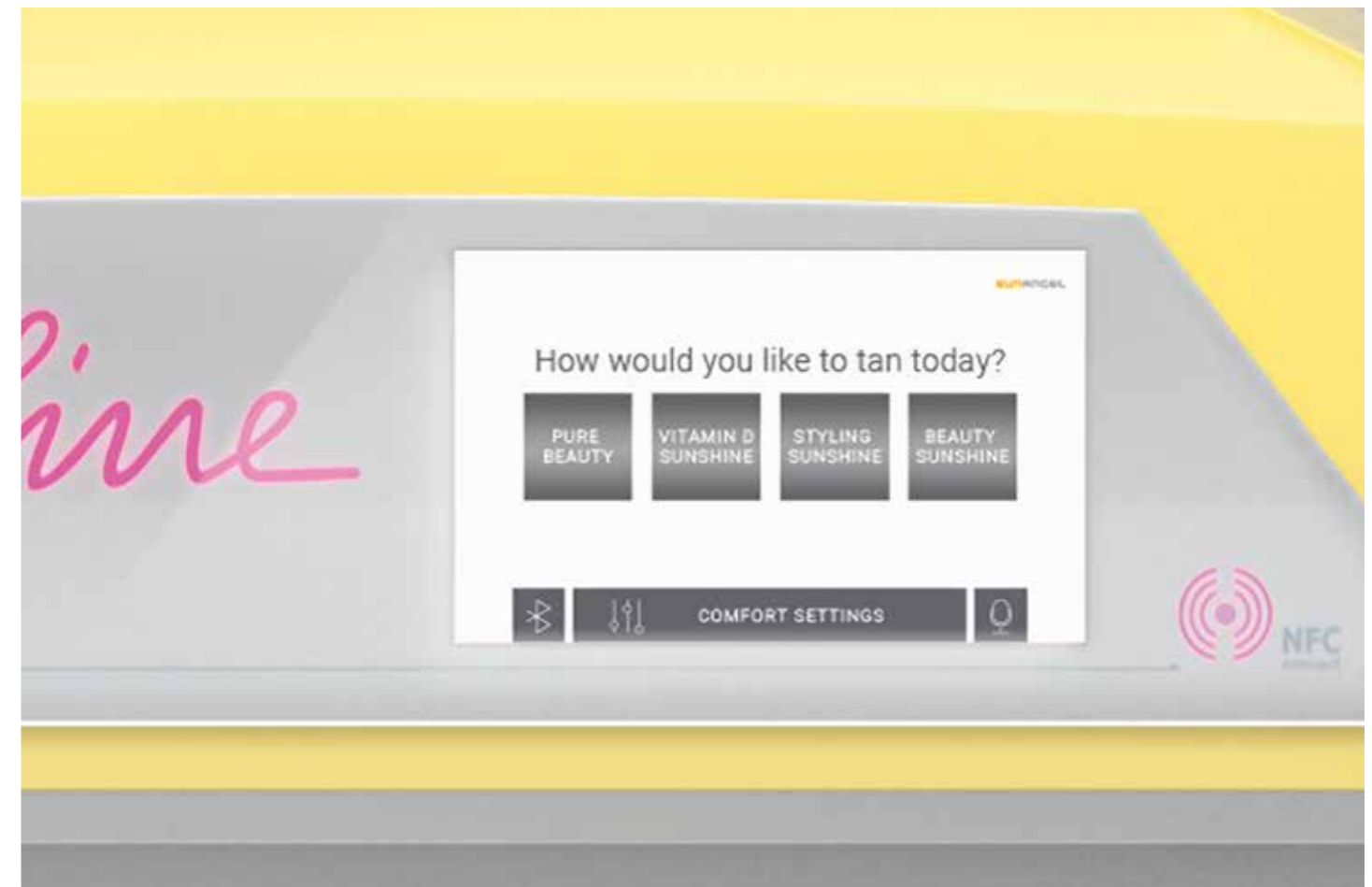
The Sun Angel Spectra is the winner of the FIBO Innovation Award 2020 in the Lifestyle, Life Balance and Wellness category.



# SELECT FROM 4 LIGHT PROGRAMS AS INDIVIDUAL AS YOUR CUSTOMERS

The Sun Angel uses the biopositive benefits of different light spectra and uses bright light to combat winter blues. With four different sun and light programs, the Sun Angel is as individual as your customers. "Pure Beauty" is a UV-free application for intensive and effective skincare and reduction of winter blues and can be used by every skin type. "Vitamin D Sunshine" specifically targets people who wish to benefit from the biopositive effects

of sunlight and only want a very soft tan. The program "Styling Sunshine" is perfect for those looking for immediate results from their very first session. "Beauty Sunshine" is adapted to the natural colour gradient of a sunny Summer Day. Before and after the tanning session, the skin is pampered with effective Beauty Light skincare. As the operator, you can set the target times of the programs yourself in the Professional Setup Manager.



#### Pure Beauty:

- UV-free skincare
- Skincare not tanning
- Suitable for all skin types
- Combats winter blues
- Comfort program with heating

#### Vitamin D Sunshine:

- Proven Vitamin D formation
- Tanning only with type B-lamps
- Beauty Light skincare
- Individual UV dose using skin sensor
- A subtle tan only – even with regular use

#### Styling Sunshine:

- Optimised light spectrum guarantees an effective tan
- Immediately visible tanning results through UV-A
- A longer-lasting deeper tan through UV-B
- Individual UV dose using skin sensor
- Proven vitamin D formation

#### Beauty Sunshine:

- Preparation of the skin with Beauty Light
- Effective Beauty Light skincare before and after the tanning session
- The Beauty Light Program duration is set by the operator
- Individual UV dose using skin sensor
- Natural tan with particular intensive and effective skincare

	Pure Beauty	Vitamin D Sunshine	Styling Sunshine	Beauty Sunshine
Sensor measurement	No (UV-free)	Yes	Yes	Yes
Beauty Light	Yes	Yes	Yes	Yes
Vitamin D formation	No	Yes*	Yes*	Yes*
Natural tanning result	No	Only minimal	Yes	Yes
Reduction of winter blues	Yes	Yes	Yes	Yes
Pre Care	No (UV-free)	No	No	Yes
After Care	No (UV-free)	No	No	Yes
Recommended duration	20 Minutes**	20 Minutes**	20 Minutes**	24 Minutes**

\* Vitamin D build-up is proven for a 20-minute tanning session  
 \*\* The duration of the light programs can be set by the operator.



## PROVEN VITAMIN D BUILD-UP DOUBLING OF THE INITIAL VALUES

The effectiveness of the Sun Angel was tested during a Vitamin D study carried out by a well-known German research institute. At the beginning of the study, the average vitamin D3 level of 90 randomly selected test individuals was approximately 14 ng/ml which is well below the recommended Vitamin D level. After four weeks, the Vitamin D levels of most Sun Angel users from the test group almost doubled compared to their original values. During the same period, the low initial value among non-Sun Angel users had fallen even further. In the program "Vitamin D Sunshine", only lamps with a higher UVB content are used. For a more visible tan the Styling Sunshine or Beauty Sunshine programs should be used.

The Sun Angel has been certified by the German health network Medical Active as an "Innovative Technology" for its sensor-safe tanning with proven Vitamin D build-up and additional effective skincare using Beauty Light.



## SKIN SENSOR SENSOR-SAFE TANNING

### Improved handling and particularly robust

The Sun Angel assesses how much UV your customers' skin can currently tolerate. Extensive studies at an institute for skin physiology confirmed the high measuring accuracy of the Sun Angel skin sensor. The latest generation of this photo-electronic precision instrument has distinctly improved handling with optimised ergonomics and an easy-to-reach placement. The new silicone protection also makes the new sensor more durable and hard-wearing. Calibration is not required thanks to the internal plausibility check.

An individual's UV sensitivity is measured on the forehead and on the lightest part of the body. The Sun Angel then calculates an individual UV dose based on the individual measurements taken. Complete analysis of the skin condition takes less than ten seconds and provides protection against sunburn using sensor control. Voice Guide and a large information display on the exterior of the Sun Angel complement its easy operation. When the sensor is not used, the Sun Angel emits only the statutory dose for an initial tanning session.







# LIGHTVISION SPECTRA HYBRID TECHNOLOGY



## PAMPERED SKIN INDIVIDUAL TAN

The new Lightvision Spectra offers a unique tanning experience with intensive and effective skincare. As a result of the reduced infrared radiation the tanning experience is even gentler and more relaxing than ever before. At the same time the tanning results are intensified.

More than 200 Beauty Light LEDs care for the skin and, thanks to the bright light, helps combat the winter blues. Personal Sunstyle offers a tan as you want at the touch of a button. As you would expect, Ergoline's top-of-the line model is fully equipped with a complete comfort package that delivers the ultimate tanning experience. Pure luxury!

### HIGHLIGHTS

- Spectra LED Facial Tanner
- Over 200 Beauty Light LEDs
- Hybrid LED Shoulder Tan
- Choose your UV intensity: from gentle to intensive
- Voice control E.V.A.
- Touch display with video function
- Fully equipped as standard
- Certified by Medical Active (DE/AT/CH)





# BLUEVISION SPECTRA ACTIVATING LIGHT



## INTENSIVE TAN WITH WOW-EFFECT

The Prestige Bluevision Spectra uses the latest LED technology for impressive tanning results. 120 activating light LEDs have an activating effect on the organism due to the blue light and prepare the skin for tanning. This enables fast visible and intensive direct pigmentation.

Thanks to the reduced infrared radiation, the new Ergoline Spectra LED facial tanner is gentle for the skin. Performance always stays on top level. Ergoline Spectra always guarantees a perfect and an intensive tan all over the facial area.

### HIGHLIGHTS

- Spectra LED Facial Tanner
- 120 Activating Light LEDs
- UV LED Shoulder Tan
- Choose your UV intensity: from gentle to intensive
- Voice control E.V.A.
- Touch display with video function
- Fully equipped as standard





## **FEATURES & TECHNOLOGIES** EXCLUSIVE AT ERGOLINE

---



# PURE AIR INSIDE

**Exclusively at Ergoline: UVC air disinfection with pure.  
For pure air and even more safety when tanning.**

Clean air has no colour, smell or taste, but it is essential for our health. If the air is contaminated with viruses, bacteria or fungal spores, it can make us ill.

The Ergoline top models now offer particularly pure air. The advanced UVC technology neutralises viruses and microorganisms directly in the air flow of the 3-zone ventilation system. The special UVC light in the range of 254 nanometers blocks the DNA respectively RNA of viruses and microorganisms. This so-called "thymine blocking" prevents further cell division and makes viruses and microorganisms permanently harmless. They can no longer reproduce and are no longer infectious. Instead of catching microorganisms, such as germs or fungi, in a filter where they can continue to multiply, they are completely deactivated with UVC air disinfection.

**For pure air and a carefree tanning experience.**



**OPTIONALLY AVAILABLE IN THE  
TOP MODELS FROM ERGOLINE**

The Ergoline top models optionally offer particularly pure air. Pure's UVC technology, which originated in the medical field, neutralises viruses and microorganisms directly in the air flow of the 3-zone ventilation system.

You want better air hygiene and more safety in the entire salon?  
Then we recommend the original Steribase from pure.

**You find more information at [www.pure-airhygiene.com](http://www.pure-airhygiene.com)**



## BEAUTY LIGHT COMPLETE

### Effective Beauty Light LEDs.

The main thing stopping people to use sunbeds is the fear of wrinkles and premature skin aging. With the Prestige Lightvision, special attention has been paid to improving skincare. High-performance LEDs guarantee an effective skincare for face, decollete area, shoulders and body. At the same time, the red light activates the supply of oxygen to the skin, which boosts the tanning effect. For an all-round glowing complexion and smooth skin.

## ACTIVATING LIGHT LED

### Immediate visible WOW effect.

Blue light activates the organism, has energising properties and boosts the vitality of the whole body. In the skin it acts like a conductor to ensure that the individual light reactions are well-coordinated. Blue light signals the presence of sunlight to the cells and therefore leads to faster tanning. The use of the Activating Light Technology (patent pending in Switzerland) allows more intense tanning results with the same UV dose.



## SHOULDER TAN HYBRID & UV LED

### Beautiful tan and skincare.

The Prestige Lightvision offers the world's first combination of Beauty Light LEDs, UVA LEDs and UVB compact lamps. For a beautiful tan with additional skincare in the shoulder area. Prestige Bluevision and Prestige Pure guarantee intense tanning with 40 UVA LEDs and UVB compact lamps. Despite the improved performance, the energy consumption of the shoulder tanners has been reduced by 80 % compared with the previous model.



## PERSONAL SUNSTYLE

### Choose your UV intensity, from gentle to intensive.

The tan you want at the touch of a button! Users can choose their own personalised tanning experience from three tanning programs. Whether they want a light tan or an immediate visible deep tan: Personal Sunstyle offers ideal tanning for any customer. The intensity of the UV performance can be adjusted at any time during the tanning session or switched off completely. This means it is also possible to enjoy a UV-free skincare treatment just with Beauty Light.



# EXTERIOR TOUCH CONTROL

## Add your own videos.

The smart video function offers the option of playing explanatory videos and even your own adverts. Another new feature is the demo mode, which can be used to explain the sunbed to your customers. Once the tanning intensity has been selected, all the important comfort features can be set and saved with NFC.



# INTERIOR TOUCH CONTROL

## Intuitive operation whilst tanning.

The 7" interior touch display makes the sunbed operation easier than ever. When tanning starts, the display changes to black and white mode, which makes it much easier to read, even when wearing UV protective eyewear. The self-explanatory operation makes it easy and intuitive to change all settings.

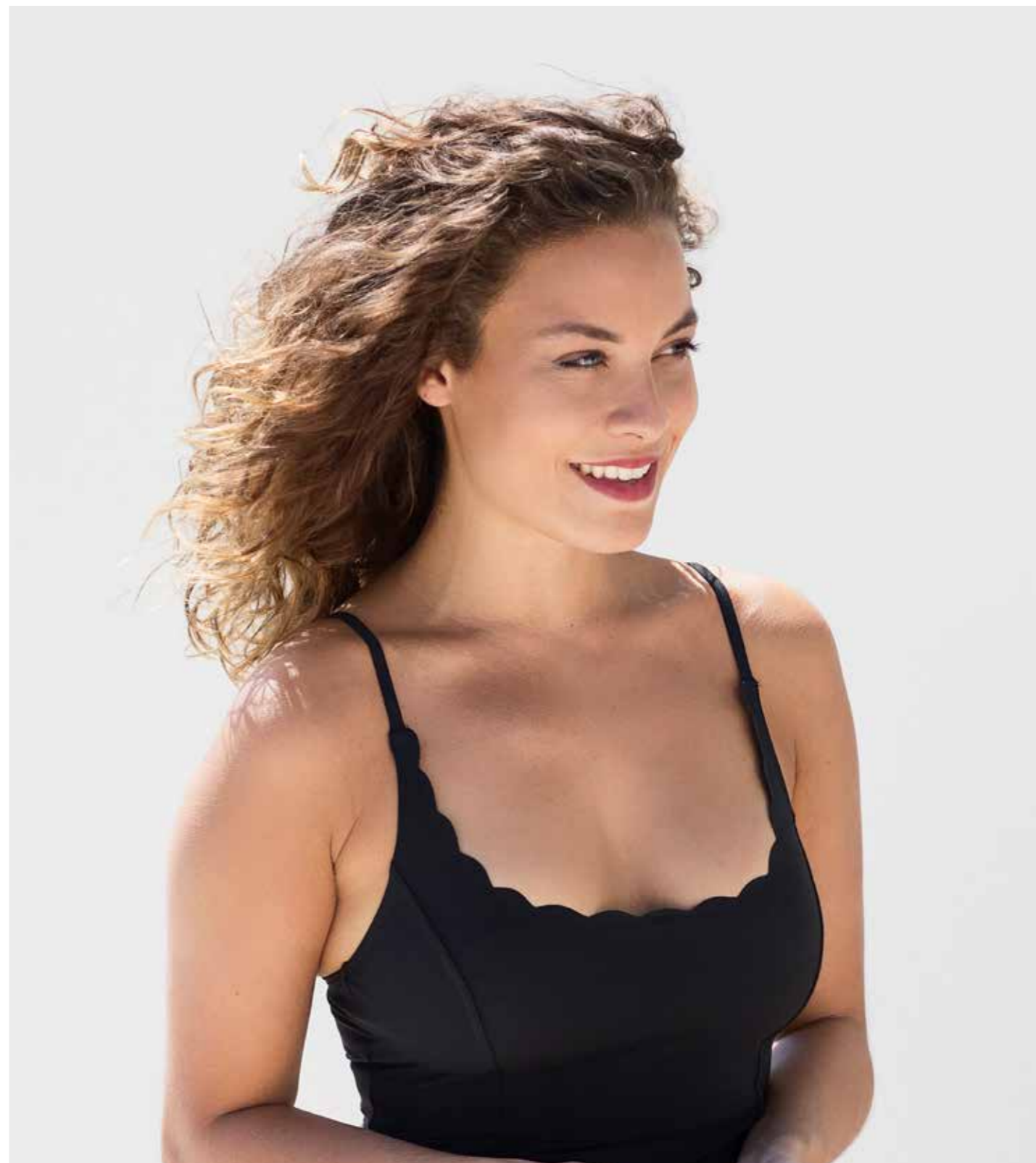


# ELECTRONIC VOICE ASSISTANT

## E.V.A. – your new voice control.

Lie down, close your eyes and enjoy! Say Hello to the Electronic Voice Assistant (E.V.A.). To start voice control during the tanning session, simply touch the display. The music volume and ventilation are then reduced for a few seconds so that voice commands can be given during this time for enhanced safety and relaxation during tanning.

Please contact us to check availability in your country.



## 3-ZONE VENTILATION WITH CLIMATRONIC PLUS

### Perfect climate – from head to toe.

The 3-zone ventilation with intelligent automatic ventilation provides the best air conditioning there has ever been in an Ergoline sunbed. Foot, body and face ventilation can be individually adjusted and the whole body is bathed in an even flow of cooling air, similar to a sea breeze. Whether it's refreshingly cool or warm and cosy – with Climatronic Plus you can achieve and maintain your ideal temperature in a closed tanning tunnel, even in extreme room temperatures. As a result of the lower heat development of the Spectra LED facial tanner, volume and cooling are once again optimised.

# CINEMATIC SOUND

## Bluetooth® Connect included.

The Cinematic Sound system will impress with its exceptional quality sound. Customers can choose between salon channels, internal music and their own favourite playlist from their smart phone via Bluetooth®. As well the pre-installed Ergoline music, you can also set up folders for various types of music such as rock, pop or dance on the internal SD card. In a brand new feature, your customers can maximise the relaxing break of their sunbed session listening to the relaxing sounds of waves and meditative sounds of nature.



# AQUA FRESH AND AROMA

## Perfect refreshment during tanning.

Ergoline's Aroma program treats your customers with a subtle fragrance in the tanning tunnel and cabin so they can enjoy the tanning experience with all their senses. The new Lightvision Spectra uses the fresh fragrance of C2 to whet the appetite for the ideal cosmetic range. The optimised Aqua Fresh atomised spray guarantees pleasant refreshment during tanning. The invigorating spray can be adjusted separately for the face and body areas. The perfect way to cool down and not just on hot summer days.



# NFC CONNECT

## Easy storage of comfort settings.

NFC stands for Near Field Communication and it is a fast and simple data transfer system, the same as that used for cashless payments. NFC Connect allows all preferred comfort settings to be saved on the customer's NFC card. Then when presented on their next visit, the sunbed immediately adjusts to the customer's personal preferences. Genuine VIP treatment to assist customer loyalty. The salon operator can also safely and quickly transfer a customer's saved preferences to other sunbeds using NFC. It couldn't be easier!



# PROFESSIONAL HANDLING



# PROFESSIONAL SET-UP

## More settings and even easier service.

With the easy-to-use Professional Set-Up Manager Plus you can adapt all device settings and, for example, even import your own videos. Maintenance instructions, e.g. for upcoming lamp changes, always inform you and your staff about the condition of the sunbed. Of course this display can be deactivated at any time.

# MARKETING SUPPORT

## Successful advertising with the number 1.

In the marketing download area of our website you can download many more advertising templates including eye-catching videos in the new Ergoline Lifestyle Look. Please contact your official Ergoline dealer for log-in information.



**HIGH QUALITY**  
MADE IN GERMANY

---





# PRESTIGE LIGHTVISION HYBRID TECHNOLOGY

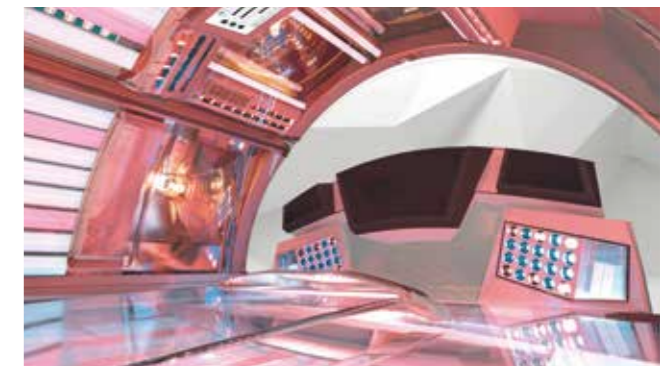


## PAMPERED SKIN PERSONALISED TANNING

The Prestige Lightvision ensures an intense tanning experience with Beauty Light Complete skincare treatment. More than 200 Beauty Light LEDs care for the skin and improve tanning results by stimulating the supply of oxygen. There are two facial tanning technologies to choose from depending on the philosophy of the studio: Ultra Performance Plus for intense direct pigmentation or Smart Light Performance (SLP) with additional Beauty Light for a particularly long-lasting, natural tan. Personal Sunstyle offers the required tan at the touch of a button. From gentle to intensive – your customers will always get a personalised tanning result. Of course Ergoline's top model always includes all the comfort features, leaving nothing to be desired. Pure luxury!

### HIGHLIGHTS

- More than 200 Beauty Light LEDs
- Hybrid LED Shoulder Tan
- Choose your UV intensity: from gentle to intensive
- 3-zone ventilation with Climatronic Plus
- Cinematic Sound incl. Bluetooth®
- E.V.A. voice control
- Exterior touch display with video function
- Interior touch display
- Certified by Medical Active (DE/AT/CH)





# PRESTIGE BLUEVISION ACTIVATING LIGHT



## ACTIVATING LIGHT LED INTENSE TANNING

The new Prestige Bluevision uses the power of blue light! The Ergoline Prestige Bluevision is the first ever model to combine the latest UV technology with the power of 120 Activating Light LEDs. Blue light has an activating effect on the entire body and prepares the skin for tanning. This allows a particularly intense direct pigmentation. For an immediately visible wow effect!

With Personal Sunstyle, you can choose from three different tanning programs – from gentle to intensive. Standard comfort features including Climatronic Plus, Surround Cooling Plus, Cinematic Sound, Voice Guide and Aqua Fresh & Aroma guarantee the highest level of tanning comfort, which will impress even the most demanding guests.

### HIGHLIGHTS

- 120 Activating Light LEDs
- UV LED Shoulder Tan
- Choose your UV intensity: from gentle to intensive
- 3-zone ventilation with Climatronic Plus
- Cinematic Sound incl. Bluetooth®
- E.V.A. voice control
- Exterior touch display with video function
- Interior touch display





# PRESTIGE 1600 / 1600 SLP HYBRID PERFORMANCE LED



## TANNING WITH **PRESTIGE**

The combination of UV and red Beauty Light in the Prestige 1600 leads to a beautiful and intense tan with skincare at the same time. Personal Sunstyle offers every customer the tan they want at the touch of a button. A full range of standard features, including 3D-Sound with Bluetooth®, Climatronic Plus and Aqua Fresh & Aroma, guarantees pure relaxation whilst tanning.

### HIGHLIGHTS

- 32 Beauty Light LEDs
- Smart Light Performance (SLP)
- Hybrid Performance
- Choose your UV intensity: from gentle to intensive
- Fully equipped as standard
- Climatronic Plus
- 3D-Sound with Bluetooth®
- Smart Control





# AFFINITY 990+ HYBRID TECHNOLOGY



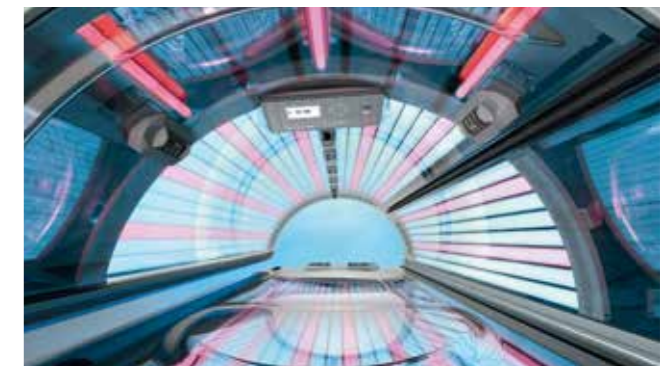
## NATURAL TAN WITH SKINCARE

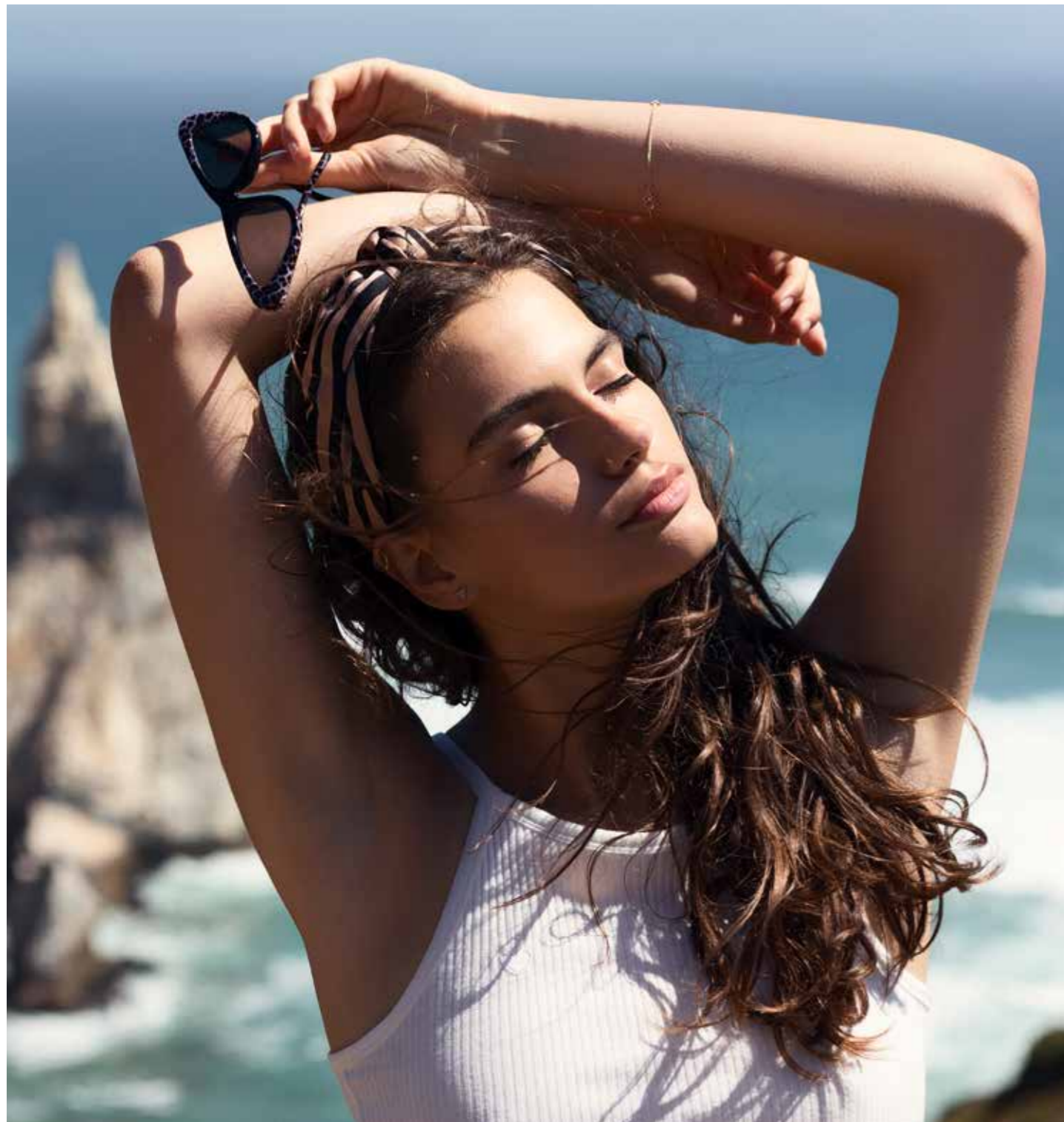
The new top model in the Affinity series enables a beautiful, natural tan including skincare thanks to the hybrid technology. The lamp division 2:1 is known from the top models from Ergoline and guarantees an excellent tanning with a beauty effect.

With Personal Sunstyle, the user can choose from three tanning programs – from gentle to intensive. In addition, you will find a lot of standard comfort features. The big tanning tunnel with body shape base area, Air Condition Plus, Aqua Fresh & Aroma with the new C2 fragrance as well as Shoulder Tan with 3D-Sound incl. Voice Guide and Bluetooth® guarantee a relaxing break.

### HIGHLIGHTS

- Hybrid Technology
- Choose your UV intensity: from gentle to intensive
- Dynamic Performance
- Large Bodyshape base (208 x 90 cm)
- Air Condition Plus
- Aqua Fresh & Aroma
- Shoulder Tan with 3D-Sound incl. Bluetooth®





# AFFINITY 900

## ADVANCED PERFORMANCE

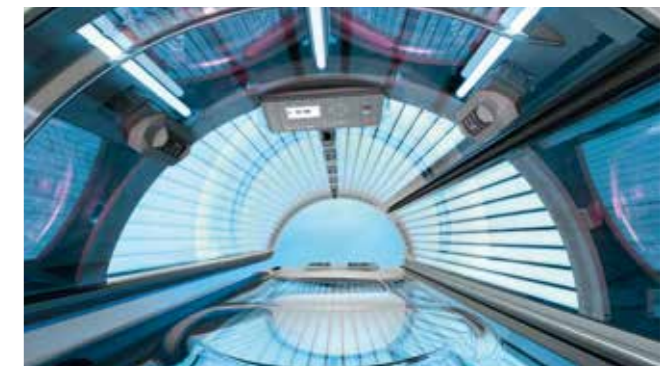


## UNBEATABLE VALUE FOR MONEY

The Affinity range combines classic elegance with clever ideas and unbeatable value for money. The Affinity 900 has 4 facial tanners and 50 UV lamps and guarantees with Turbo Power intense tanning results. Air Condition Plus, Aqua Fresh and Aroma as standard, as well as optional Shoulder Tan with 3D-Sound with Bluetooth®, leave nothing to be desired.

### HIGHLIGHTS

- Advanced Performance
- 50 UV lamps
- 4 Ultra Performance Plus facial tanners
- Large Bodyshape base (208 x 90 cm)
- Air Condition Plus
- Aqua Fresh & Aroma
- Optional:
  - Shoulder Tan with 3D-Sound incl. Bluetooth®
  - 3D-Sound incl. Bluetooth®





# AFFINITY 700

## ADVANCED PERFORMANCE



## ENTRY-LEVEL MODEL IN THE AFFINITY RANGE

The Ergoline Affinity 700 offers state-of-the-art sunbed technology at an unbeatable price. Its distinctive lines, eye-catching LED Light Show and brightly lit tanning tunnel invites to an enticing tanning experience! As the operator, you can use the integrated Professional Set-up Manager to adjust all settings easily. 46 UV lamps with new Advanced Performance technology offer a significantly improved tanning performance in the body area compared with previous models. In the facial area, the Ultra Performance Plus technology with 3 facial tanners and 2 additional UV-B spaghetti lamps guarantee optimum tanning performance.

### HIGHLIGHTS

- Turbo Power and Twin Power
- 46 UV lamps
- 3 Ultra Performance Plus facial tanners
- Bodyshape base (200 x 80 cm)
- Air Condition Plus (in the Turbo Power)
- Optional:
  - Shoulder Tan with 3D-Sound incl. Bluetooth®
  - 3D-Sound incl. Bluetooth®





# BALANCE 770+ BEAUTY SELECT



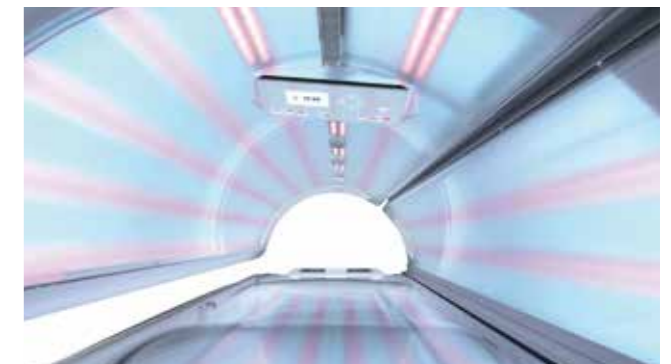
## NATURAL TAN INTENSIVE SKINCARE

With the new Balance 770+, the low-pressure light spectrum is supplemented with 40 Beauty Light LEDs in the facial area and 30 Beauty Light LEDs on the body. For particularly intensive skincare, certified by Medical Active.

With Beauty Select, every user receives an individual beauty or tanning program. With the UV-free "Pure Beauty" program, the Balance 770+ can be used by all skin types. No matter how your customers want to enjoy tanning and the light – Climatronic and 3D-Sound including Bluetooth® guarantee pure relaxation.

### HIGHLIGHTS

- 70 Beauty Light LEDs
- 32 x UV + 14 x Beauty Light
- Choose your UV intensity: from gentle to intensive
- UV-free on request
- Climatronic
- 3D-Sound incl. Bluetooth® Connect
- Certified by Medical Active (DE/AT/CH)





# BALANCE 700

## HYBRID PERFORMANCE



## WELLNESS FOR THE SKIN

The Ergoline Balance 700 ensures a particularly gentle tanning experience with low pressure technology. This is made possible by the beneficial light of Hybrid Performance, which combines sunlight with Beauty Light. This means that, in spite of a lower UVA dose, a beautiful and natural tan can be achieved. Hybrid Performance uses an intelligent combination of sunlight and Beauty Light to reduce the side effects of the sun. The typical drying effects on the skin and unpleasant smell of UV now belong to the past. After tanning on the Ergoline Balance, the skin feels velvety smooth. For a particularly pleasant tanning experience!

### HIGHLIGHTS

- Hybrid Performance
- 32 x UV + 14 x Beauty Light
- Pure low pressure technology
- Frosted Acrylic (200 x 80 cm)
- Optional:
  - 3D-Sound incl. Bluetooth®







# INSPIRATION 600 / 500

## SMART PERFORMANCE



## THE COMPACT CLASS BY ERGOLINE

With dual circuit ventilation system, 3D-Sound and NFC Connect the Inspiration 600 offers the kind of comfort you would otherwise only find at the top of the range. With 4 facial tanners and 42 UV lamps (Smart Performance), the Inspiration 600 is at the top end of the compact class.

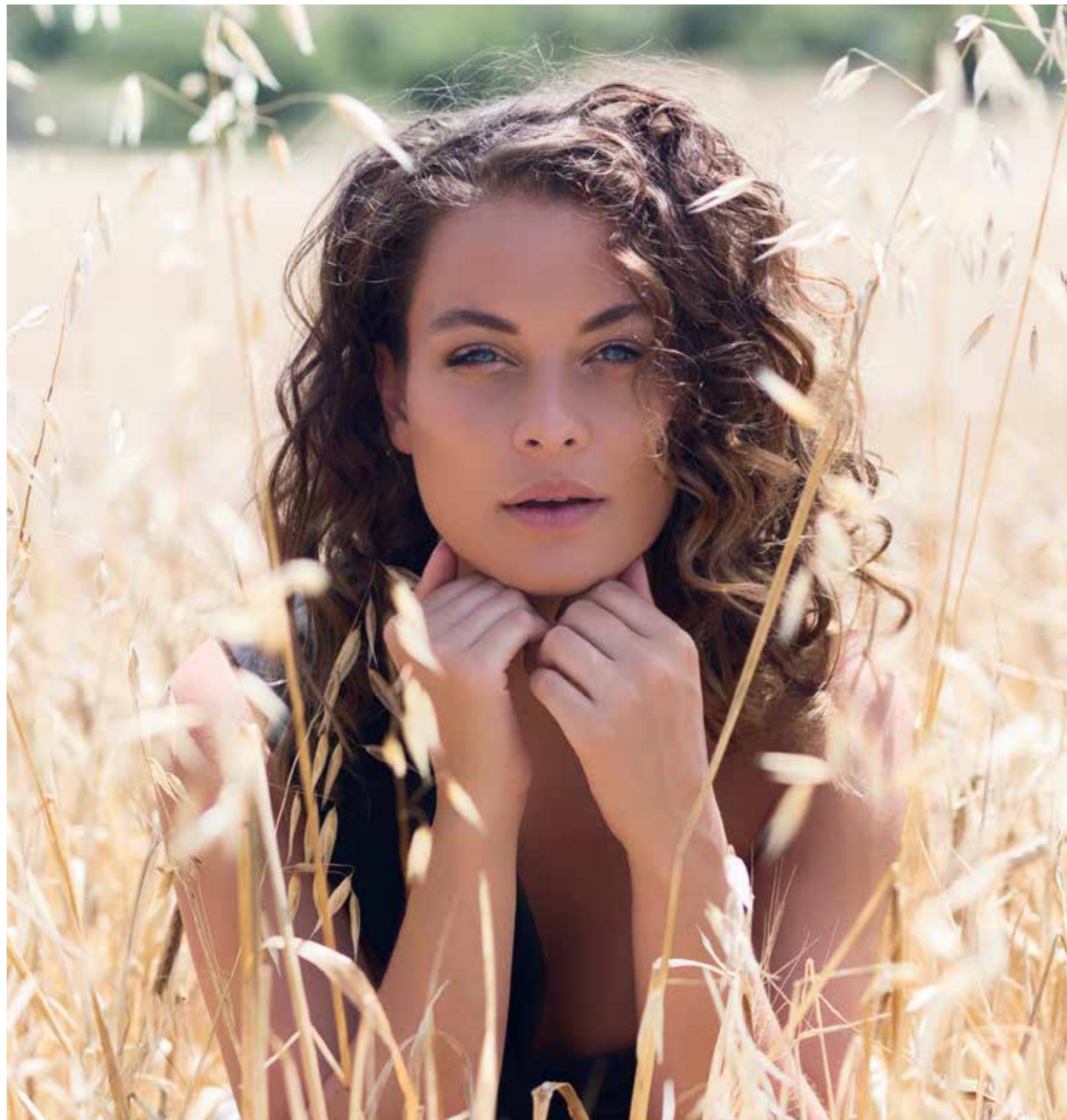
With 3 facial tanners and 38 UV lamps, the Inspiration 500 with Smart Performance technology offers outstanding tanning performance with energy savings.

The Inspiration 500 / 600 now has a particularly classy paint finish in high-gloss champagne.

### HIGHLIGHTS

- Inspiration 600 – Twin Power:
  - 42 UV lamps
  - 4 Ultra Performance Plus facial tanners
  - NFC Connect
- Inspiration 500 – Twin / Super Power:
  - 38 UV lamps
  - 3 Ultra Performance Plus facial tanners





# INSPIRATION 500 SLP HYBRID PERFORMANCE



## SMART TANNING

The Inspiration 500 SLP is the affordable entry-level model in Ergoline's Hybrid Technology. Smart Light Performance (SLP) combines intensely tanning UV light with Beauty Light skincare in a high pressure facial tanner. Despite reduced UVA, the smartsun bulb, a glass reflector with 120 layers of special coating and a newly designed filter glass combine to produce an intensive and long-lasting tan. The red Beauty Light improves blood circulation, thus optimising the tanning result – without the need for stronger UV doses. At the same time, Beauty Light cares for the skin, even during the tanning session, and promotes a particularly lovely and fresh complexion. Three additional smartsun spaghetti lamps enhance the spectrum with a combination of UVB and Beauty Light. After just a few hours, a lovely, natural and long-lasting tan develops.

### HIGHLIGHTS

- Smart Light Performance (SLP)
- 26 x smartsun + 12 x UV lamps
- Hybrid Performance
- Natural and long-lasting tan
- Optional:
  - 3D-Sound





# PASSION 350 SUPER POWER



## COMPACT POWER PACKAGE

38 UV lamps and 3 Ultra Performance facial tanners including two UV-B spaghetti lamps ensure a seamless all-round tan from head to toe. Comfort is also a top priority. The Bodyform Plus base with its integrated headrest guarantees an even distribution of body weight so that even longer tanning sessions do not become uncomfortable. Stereo Sound Plus with MP3 dock provides the best in music entertainment.

### HIGHLIGHTS

- 3 Ultra Performance Plus facial tanners
- 38 UV lamps
- Particularly compact dimensions
- New mood design
- Bodyform Plus base (215 x 78 cm)
- Built-in timer (Time Control)





# FLAIR 250 / 200 SUPER POWER



## FLAIR OF A NEW ERA

With 30 UV lamps and 3 Ultra Performance facial tanners, the Ergoline Flair 250 provides UV equipment, which you would normally only expect from higher class models. The Bodyform Plus base with integrated headrest and the Comfort Cooling system with adjustable ventilation nozzles for head and body ensure a relaxing tanning session. The Ergoline Flair 200 has a lot to offer with minimal space requirement. Its particularly compact dimensions mean it can be fitted in everywhere. 27 UV lamps provide an intense and even body tan. With an Ultra Performance facial tanner, even the entry-level model features top class innovative glass reflector UV technology – from a 230 V mains supply! There's no shortage of comfort features either: The comfortable Bodyform Plus base with integrated headrest, Comfort Cooling and Stereo Sound ensure perfect relaxation.

### HIGHLIGHTS

- Flair 250:
  - 30 UV lamps
  - 3 Ultra Performance facial tanner
- Flair 200:
  - 27 UV lamps
  - 1 Ultra Performance facial tanner
  - 230 V connection (mains plug)
  - Particularly compact dimensions
  - Bodyform Plus base (215 x 71 cm)
  - Built-in timer (Time Control)





# SUNRISE 7200

## HYBRID LIGHT LED



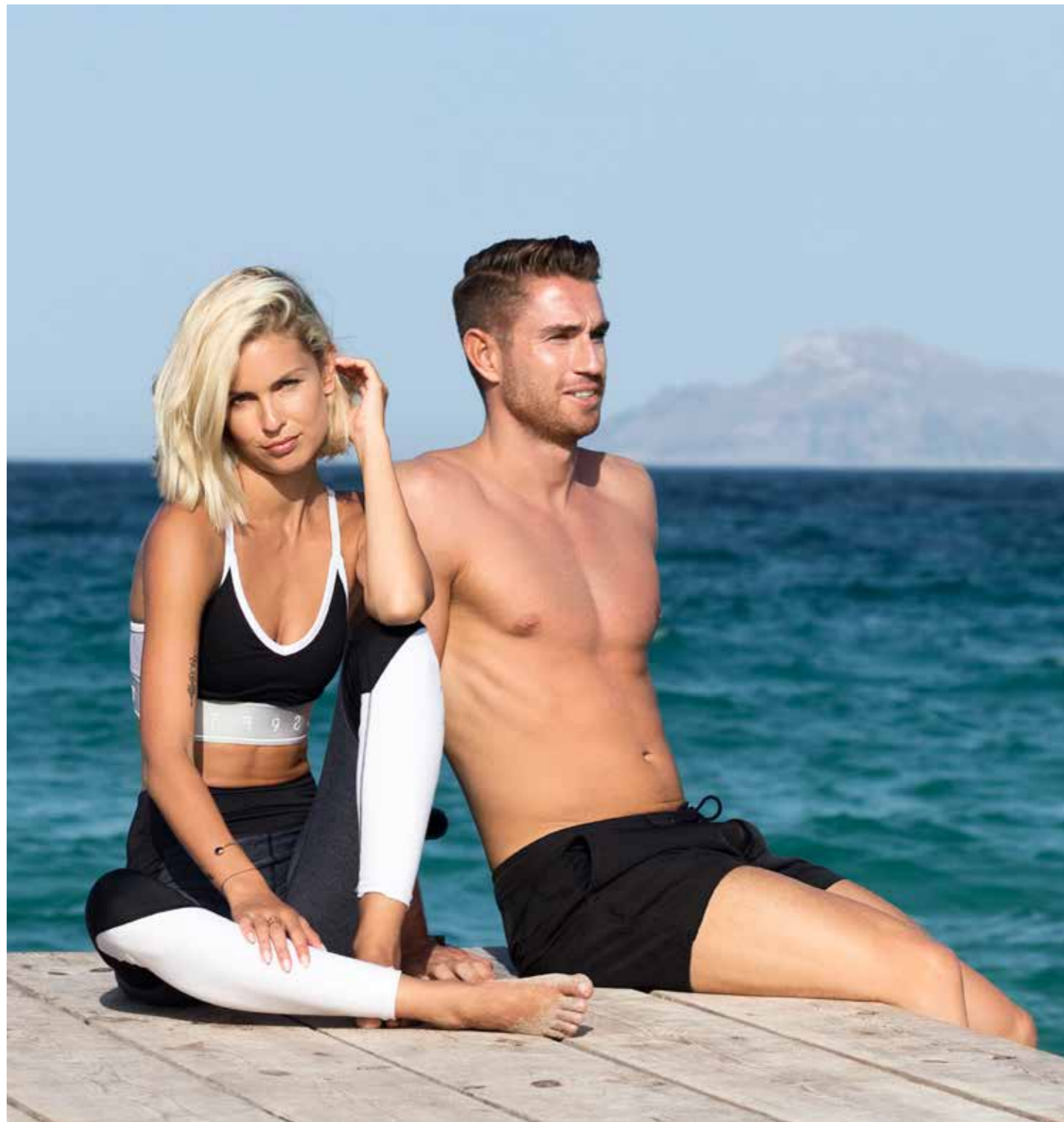
### FITNESS TRAINER WITH BEAUTY EFFECT

The Sunrise 7200 Hybrid Light LED offers a natural, seamless tan with additional skincare. The combination of UV light and red Beauty Light ensures a glowing, long-lasting tan, as well as skincare. During the tanning session, the face and decollete area are treated by special Beauty Light LEDs – for smooth skin and a particularly fresh complexion. The 14 smartsun Plus lamps also guarantee glowing, beautiful skin for the body. With Personal Sunstyle, the Sunrise Hybrid Light also offers three customised tanning programs – so your customers can decide how they would like to enjoy their tanning session. The patented Vibra Shape vibration training helps with weight loss, firms up connective tissue and prevents cellulite.

#### HIGHLIGHTS

- Hybrid Performance
- 14 x 200 W smartsun + 34 x 200 W UV lamps
- 60 Beauty Light LEDs
- Choice of UV intensity
- Vibra Shape vibration training
- Four fitness programs
- Seamless tan
- Extensive comfort features





# SUNRISE 7200 / 6200

## DYNAMIC / SMART PERFORMANCE



## SUNNY FITNESS TRAINING

With Vibra Shape, a tanning session on the Sunrise also becomes a fitness session at the same time. Vibra Shape simulates 20,000 steps in just 10 minutes! Vibration training has a whole range of positive effects on fitness. It supports muscle generation, stimulates lipid metabolism, tautens the connective tissue and improves physical mobility and coordination. The enhanced supply of oxygen to the skin also intensifies the tanning effect. The choice of four different training programs and side-alternating vibration, which is gentle on the joints, makes Vibra Shape the ideal training partner – even for older users. Make the Sunrise a personal trainer for your customers – in a completely private environment.

### HIGHLIGHTS

- Sunrise 7200 – Dynamic or Smart Performance
  - LED Light Show
- Sunrise 6200 – Smart Performance
  - New design
  - 48 UV lamps with 180 W or 200 W
  - Vibra Shape vibration training
  - Four fitness programs
  - Seamless tan
  - Extensive comfort features





# SUNRISE 480

## ADVANCED PERFORMANCE



## TURBO POWER

The Sunrise is not only known for being a respected investment, but also for creating beautiful results for your customers. Whether you are reinforcing your current line-up or bringing in something new for your customers to try, the Sunrise will give you comfort features, high-performance and easy operation. The patented Vibra Shape vibration training helps with weight loss, firms up connective tissue and prevents cellulite.

### HIGHLIGHTS

- Advanced Performance (Turbo Power)
- 48 x 180 W UV lamps
- Vibra Shape vibration training
- Four fitness programs
- Seamless tan
- Extensive comfort features





# ESSENCE 440

## SMART POWER



## SMART POWER

The Ergoline Essence 440 offers efficient Smart Power technology, particularly low space requirements and great value for money. Highly efficient ballasts result in a reduced energy requirement. All this with an impressive 200 watt tanning performance. For a perfect tan in just 15 minutes, without the typical white areas on the shoulders and back.

### HIGHLIGHTS

- Energy-saving Smart Power
- 44 x 200 W UV lamps
- Seamless tan
- Compact dimensions







READY, SET,  
**GLOW**

---



# BEAUTY ANGEL 7200

## BEAUTY LIGHT



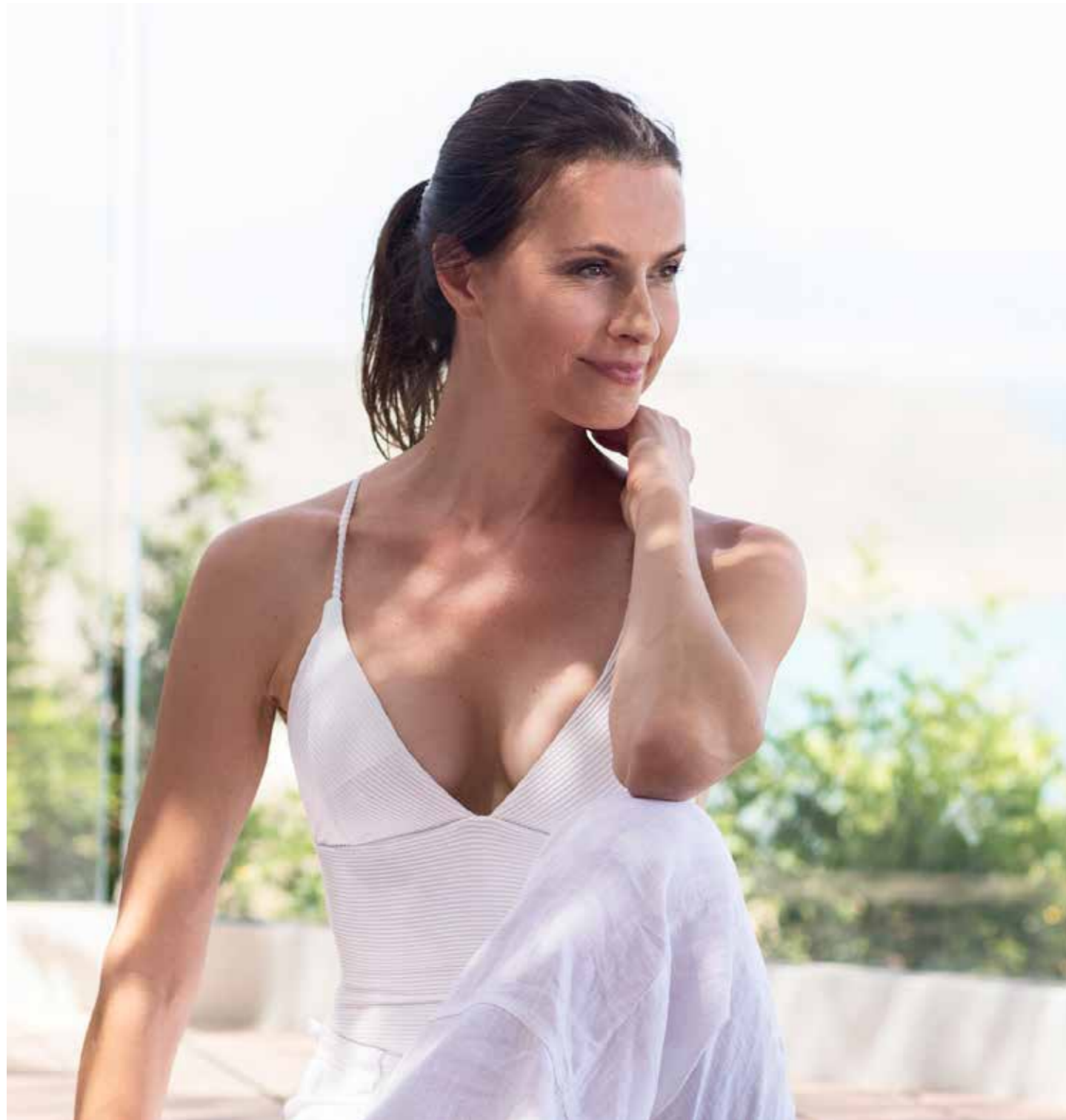
## BRINGING BEAUTY TO LIGHT

The new Beauty Angel 7200 is the perfect fit for your salon and spa services. Intensive Beauty Light paired with its patented Vibra Shape vibration training, the treatment is beneficial for all skin types and fitness levels. This makes the Beauty Angel 7200 the ideal relaxation and body enhancement environment. Users are seamlessly guided through the 4 different Vibra Shape programs with the Beauty Angel's built-in Voice Guide system. The Beauty Angel 7200 features ambient LED lighting and floating door system to ensure a bold statement in your business.

### HIGHLIGHTS

- 32 x 180 W Beauty Light Lamps
- UV-free treatment
- Can be used at any age / for any skin type
- Energizing 10-minute workout
- Surround cooling plus
- Aroma "Vital"
- Floating door design
- Vibra Shape vibration training
- 3D-Sound incl. Bluetooth®





# BEAUTY ANGEL CVT 32

## BEAUTY LIGHT



## BEAUTY & FITNESS

Beauty Light treatments combined with patented Vibra Shape vibration training are a mega trend not only in the USA. The CVT 32 fits into even the smallest spaces. The Beauty Angel CVT 32 light treatment using Vibra Shape provides a whole body approach to beauty and fitness. The vibration plate with alternating side movements similar to natural walking trains all muscles from legs up into the back. At the same time, calories are burned and cellulite can be prevented effectively thanks to the tightening of the connective tissue. Improved circulation and micro-circulation reinforce the results of the light treatment.

### HIGHLIGHTS

- 32 x 180 W Beauty Light
- UV-free treatment
- Can be used at any age / for any skin type
- Proven effectiveness
- Vibra Shape vibration training
- Four fitness programs
- Integrated timer (Time Control)
- Compact dimensions





# BEAUTY ANGEL C 28

## BEAUTY LIGHT



### PURE BEAUTY LIGHT

Beauty Angel stands for an innovative light and well-being treatment that reduces the signs of the times, meeting the demand for gentle and natural skin rejuvenation. Multiple uses make the Beauty Angel an interesting addition to the service range at up-market fitness clubs, cosmetic salons, well-being and spa centres, as well as tanning salons. The entry-level model is fitted with 28 Beauty Light lamps in a customised outfit. What makes it particularly practical is its low power consumption, which only requires a 230 V power connection.

#### HIGHLIGHTS

- 28 Beauty Light lamps
- UV-free treatment
- Can be used at any age / for any skin type
- Proven effectiveness
- Compact dimensions
- Integrated timer (Time Control)
- 230 V connection (mains plug)





# BEAUTY ANGEL ELT BEAUTY LIGHT PLUS



## EFFECTIVE BEAUTY TREATMENT

The patented Energizing Light Technology (ELT) fulfills the need for a really gentle but highly effective beauty treatment. Light from various active spectrums ("Beauty Light Plus") penetrates deep into the skin and stimulates the body's own production of collagen. The light is very gentle and exceedingly pleasant. Extensive studies and a research project at Ulm University have confirmed the outstanding effectiveness of Beauty Light Plus. The light technology has also been recognised by Medical Active for innovative technology. To achieve the best results, we always recommend using special cosmetic products during the treatment, such as UPsolute Photofusion. The effectiveness of the active cosmetic ingredients is enhanced by the light – leading to immediately visible results and enthusiastic users.

### HIGHLIGHTS

- Energizing Light Technology
- Beauty Light Plus active spectrums
- UV-free treatment
- Can be used at any age / for any skin type
- Proven effectiveness
- Perfect combined with cosmetics
- Certified by Medical Active (DE/AT/CH)





	Sun Angel Spectra	Prestige Lightvision Spectra	Prestige Bluevision Spectra	
PERFORMANCE	Technology	Individual Hybrid Technology	Hybrid Technology	Dynamic Performance
	Skin sensor	✓	-	-
	LED Technology incl. Facial Tanner and Shoulder Tan	212 x Beauty Light LEDs 196 x UV-LEDs	212 x Beauty Light LEDs 196 x UV-LEDs	120 x Activating Light LEDs 208 x UV-LEDs
	Low pressure lamps	38 x 200 W Type A 14 x 200 W Type B	38 x 200 W Trend Advanced 14 x 200 W smartsun Plus	38 x 200 W Trend Advanced 14 x 200 W Ergoline Blue
	Facial tanner	Spectra LED facial tanner: 168 x UVA LEDs	Spectra LED facial tanner: 168 x UVA-LEDs	Spectra LED facial tanner: 168 x UVA-LEDs
	Spaghetti lamps	4 x 8 W UVB Spaghetti lamps	4 x 8 W smartsun Spaghetti lamps	4 x 8 W UVB Spaghetti lamps
	Shoulder Tan	Hybrid LED Shoulder Tan: 12 x Beauty Light LEDs 28 x UVA LEDs 2 x 7 W UVB Compact lamp	Hybrid LED Shoulder Tan: 12 x Beauty Light LEDs 28 x UVA LEDs 2 x 7 W UVB Compact lamp	UV LED Shoulder Tan: 40 x UVA LEDs 2 x 7 W UVB Compact lamp
	Choice of UV intensity Pure Beauty Light treatment	Pure Beauty, Vitamin D Sunshine, Styling Sunshine, Beauty Sunshine ✓	Sensitive, Medium, Intensive ✓	Sensitive, Medium, Intensive -
COMFORT	Air conditioning	Climatronic Plus	Climatronic Plus	Climatronic Plus
	Ventilation	Surround Cooling Plus 3-zone ventilation	Surround Cooling Plus 3-zone ventilation	Surround Cooling Plus 3-zone ventilation
	Aqua Fresh / Aroma	✓/✓	✓/✓	✓/✓
	Sound	Cinematic Sound	Cinematic Sound	Cinematic Sound
	Smart phone connection	Bluetooth® Connect	Bluetooth® Connect	Bluetooth® Connect
	Acrylic base	Multi Relax (220 x 95 cm)	Multi Relax (220 x 95 cm)	Multi Relax (220 x 95 cm)
	HANDLING	E.V.A. Voice control	✓	✓
External display		Exterior 10" touch display incl. video function	Exterior 10" touch display incl. video function	Exterior 10" touch display incl. video function
Internal display		Interior 7" touch display	Interior 7" touch display	Interior 7" touch display
NFC Connect		✓	✓	✓
Voice Guide		✓	✓	✓
Set-up Manager		Professional Set-up Manager Plus	Professional Set-up Manager Plus	Professional Set-up Manager Plus
Remote Access		✓ (boards required)	✓ (boards required)	✓ (boards required)
Service Light		✓	✓	✓
Miscellaneous		Including 3 additional lamp sets Medical Active certification	Including 3 additional lamp sets Medical Active certification	Including 3 additional lamp sets
DESIGN		External lighting	LED Light Show	LED Light Show
	Internal lighting	LED Interior Light	LED Interior Light	LED Interior Light
TECHNICAL SPECIFICATIONS	Dimensions closed	241 x 155 x 151	241 x 155 x 151	241 x 155 x 151
	Dimensions open (L x W x H in cm)	241 x 155 x 198	241 x 155 x 198	241 x 155 x 198
	Required interior cabin dimensions (L x W in cm)	250 x 230	250 x 230	250 x 230
	Max. power consumption with 400/415 V 3N power supply	14,400 W	14,400 W	14,400 W
	Fuse (delayed action)	3 x 35 A	3 x 35 A	3 x 35 A
	Weight	610 kg	600 kg	600 kg
	ART. NO. + PRICES	<b>Art. No. 500001501</b> featured as standard & E.V.A. Price: 48,195.- € <b>Art. No. 500001600</b> featured as standard, pure air UVC air disinfection & E.V.A. Price: 49,295.- €	<b>Art. No. 500001500</b> featured as standard & E.V.A. Price: 46,645.- € <b>Art. No. 500001594</b> featured as standard, pure air UVC air disinfection & E.V.A. Price: 47,745.- €	<b>Art. No. 500001556</b> featured as standard & E.V.A. Price: 45,595.- € <b>Art. No. 500001598</b> featured as standard, pure air UVC air disinfection & E.V.A. Price: 46,695.- €

Please note that there is a different pricing system for the new Prestige series.

	Prestige Lightvision	Prestige Bluevision	Prestige 1600	
PERFORMANCE	Technology	Hybrid Technology	Dynamic Performance	Hybrid Performance
	Skin sensor	-	-	-
	LED Technology incl. Facial Tanner and Shoulder Tan	212 x Beauty Light LEDs 28 x UVA LEDs	120 x Activating Light LEDs 40 x UVA LEDs	32 x Beauty Light LEDs
	Low pressure lamps	38 x 200 W Trend Advanced 14 x 200 W smartsun Plus	38 x 200 W Trend Advanced 14 x 200 W Ergoline Blue	38 x 200 W Trend Advanced 14 x 200 W smartsun Plus
	Facial tanner	4 x 520 W Ultra Performance Plus 4 x 520 W Smart Light Performance (o)	4 x 520 W Ultra Performance Plus	4 x 520 W Ultra Performance Plus 4 x 520 W Smart Light Performance (o)
	Spaghetti lamps	4 x 8 W smartsun	4 x 8 W Trend	3 x 8 W smartsun
	Shoulder Tan	Hybrid LED Shoulder Tan: 12 x Beauty Light LEDs 28 x UVA LEDs 2 x 7 W UVB Compact lamp	UV LED Shoulder Tan: 40 x UVA LEDs 2 x 7 W UVB Compact lamp	2 x 240 W
	Choice of UV intensity Pure Beauty Light treatment	Sensitive, Medium, Intensive ✓	Sensitive, Medium, Intensive -	Sensitive, Medium, Intensive -
COMFORT	Air conditioning	Climatronic Plus	Climatronic Plus	Climatronic Climatronic Plus (o)
	Ventilation	Surround Cooling Plus 3-zone ventilation	Surround Cooling Plus 3-zone ventilation	Comfort Cooling Plus
	Aqua Fresh / Aroma	✓/✓	✓/✓	✓/✓
	Sound	Cinematic Sound	Cinematic Sound	3D-Sound
	Smart phone connection	Bluetooth® Connect	Bluetooth® Connect	Bluetooth® Connect & MP3 AUX
	Acrylic base	Multi Relax (220 x 95 cm)	Multi Relax (220 x 95 cm)	Multi Relax (220 x 95 cm)
	HANDLING	E.V.A. Voice control	✓ (o)	✓ (o)
External display		Exterior 10" touch display incl. video function	Exterior 10" touch display incl. video function	Control Center
Internal display		Interior 7" touch display	Interior 7" touch display	Smart Control
NFC Connect		✓	✓	✓
Voice Guide		✓	✓	✓
Set-up Manager		Professional Set-up Manager Plus	Professional Set-up Manager Plus	Professional Set-up Manager
Remote Access		✓ (boards required)	✓ (boards required)	-
Service Light		✓	✓	✓
Miscellaneous		Including 3 additional lamp sets Medical Active certification	Including 3 additional lamp sets	-
DESIGN		External lighting	LED Light Show	LED Light Show
	Internal lighting	LED Interior Light	LED Interior Light	LED Interior Light
TECHNICAL SPECIFICATIONS	Dimensions closed	241 x 155 x 151	241 x 155 x 151	238 x 155 x 150
	Dimensions open (L x W x H in cm)	241 x 155 x 198	241 x 155 x 198	238 x 155 x 196
	Required interior cabin dimensions (L x W in cm)	250 x 230	250 x 230	250 x 230
	Max. power consumption with 400/415 V 3N power supply	16,800 W	16,800 W	17,800 W
	Fuse (delayed action)	3 x 35 A	3 x 35 A	3 x 35 A
	Weight	630 kg	630 kg	630 kg
	ART. NO. + PRICES	<b>Art. No. 500001484</b> featured as standard Price: 42,895.- € <b>Art. No. 500001485</b> featured as standard & E.V.A. Price: 43,545.- € <b>Art. No. 500001488</b> SLP featured as standard Price: 43,645.- € <b>Art. No. 500001489</b> SLP featured as standard & E.V.A. Price: 44,295.- € <b>Art. No. 500001592</b> featured as standard, pure air UVC air disinfection & E.V.A. Price: 44,645.- €	<b>Art. No. 500001490</b> featured as standard Price: 42,295.- € <b>Art. No. 500001491</b> featured as standard & E.V.A. Price: 42,895.- € <b>Art. No. 500001596</b> featured as standard, pure air UVC air disinfection & E.V.A. Price: 43,995.- €	<b>Art. No. 500001281</b> featured as standard Price: 50,645.- € <b>Art. No. 500001282</b> featured as standard & Climatronic Plus Price: 51,395.- € <b>Art. No. 500001380</b> SLP featured as standard & Climatronic Plus Price: 51,995.- €

(o) = optional

Please note that there is a different pricing system for the new Prestige series.

\* The power of the facials is reduced to 420 W due to national regulations (0.3 W/m²).



	<b>Affinity 990+</b>	<b>Affinity 900</b>	<b>Affinity 700</b>	<b>Balance 770+</b>	
<b>PERFORMANCE</b>	Technology	Hybrid Performance	Advanced Performance	Advanced Performance Twin Power Advanced Performance Turbo Power	
	LED Technology	-	-	-	
	Low pressure lamps	36 x 200 W Trend Direct 14 x 200 W smartsun	50 x 160 W Trend	Twin: 28 x 160 W / 18 x 120 W Trend Turbo: 46 x 160 W Trend	32 x 180 W / 160 W Sun Light** 14 x 180 W / 160 W Beauty Light**
	Facial tanner*	4 x 520 W Ultra Performance Plus	4 x 520 W Ultra Performance Plus	3 x 500 W Ultra Performance Plus	-
	Spaghetti lamps	3 x 8 W smartsun	3 x 8 W Trend	2 x 8 W Trend	-
	Shoulder Tan	7 x 25 W smartsun	7 x 25 W (o)	7 x 25 W Trend Advanced (o)	-
	Choice of UV intensity Pure Beauty Light treatment	Sensitive, Medium, Intensive	-	-	Pure Beauty / Beauty & Sun / Sun & Beauty ✓
	<b>COMFORT</b>	Air conditioning	Air Condition Plus	Air Condition Plus	Twin: - Turbo: Air Condition Plus
Ventilation		Comfort Cooling Plus	Comfort Cooling Plus	Comfort Cooling Plus	Comfort Cooling Plus
Aqua Fresh / Aroma		✓ / ✓	-	-	-
Sound		3D-Sound	3D-Sound (o)	3D-Sound (o)	3D-Sound
Smart phone connection		Bluetooth® Connect MP3 AUX	Bluetooth® Connect (o) MP3 AUX (o)	Bluetooth® Connect (o) MP3 AUX (o)	Bluetooth® Connect MP3 AUX
Acrylic base		Body Shape (208 x 90 cm)	Body Shape (208 x 90 cm)	Body Shape (200 x 80 cm)	Frosted Acrylic (200 x 80 cm)
<b>HANDLING</b>	E.V.A. Voice control	-	-	-	-
	External display	Program selection	-	-	Program selection
	Internal display	Smart Control	Smart Control	Smart Control	Smart Control
	NFC Connect	-	-	-	-
	Voice Guide	✓	✓ (o)	✓ (o)	✓
	Set-up Manager	Professional Set-up Manager	Professional Set-up Manager	Professional Set-up Manager	Professional Set-up Manager
	Remote Access	-	-	-	-
	Service Light	-	-	-	-
	Miscellaneous	Including 2 additional lamp sets	Including 2 additional lamp sets	Including 2 additional lamp sets	Including 2 additional lamp sets Medical Active certification
	<b>DESIGN</b>	External lighting	LED Mood Light	LED Light Show	LED Light Show
Internal lighting		LED Interior Light	LED Interior Light	LED Interior Light	LED Interior Light
<b>TECHNICAL SPECIFICATIONS</b>	Dimensions closed	235 x 148 x 147	226 - 235 x 148 x 147	226 - 235 x 138 x 141	235 x 138 x 141
	Dimensions open (L x W x H in cm)	235 x 148 x 183	226 - 235 x 148 x 183	226 - 235 x 138 x 175	235 x 138 x 175
	Required interior cabin dimensions (L x W in cm)	240 x 230	240 x 230	240 x 230	240 x 230
	Max. power consumption with 400/415 V 3N power supply	14,400 W	14,800 W	Twin Power: 10,800 - 10,900 W TurboPower: 13,300 W	12,800 W
	Fuse (delayed action)	3 x 35 A	3 x 35 A	3 x 35 A	3 x 25 A
	Weight	550 kg	610 kg	580 kg	545 kg
<b>ART. NO. + PRICES</b>	<b>Art. No. 500001530</b> featured as standard Price: 40,345.- €	<b>Art. No. 100003265</b> incl. Air Condition Plus Price: 31,590.- €  <b>Accessories</b> <b>Art. No. 100003743</b> 3D-Sound-Unit incl. Bluetooth® Price: 1,329.- € <b>Art. No. 100003719</b> Shoulder Tan incl. 3D-Sound-Unit incl. Bluetooth® Price: 2,645.- €	<b>Art. No. 100003266</b> Twin Power Price: 24,195.- € <b>Art. No. 100003335</b> Twin Power, incl. intermediate acrylic base Price: 25,045.- € <b>Art. No. 100003322</b> Turbo Power, incl. Air Condition Plus Price: 28,595.- €  <b>Accessories</b> <b>Art. No. 100003743</b> 3D-Sound-Unit incl. Bluetooth® Price: 1,329.- € <b>Art. No. 100003719</b> Shoulder Tan incl. 3D-Sound-Unit incl. Bluetooth® Price: 2,645.- €	<b>Art. No. 500001567</b> featured as standard Price: 31,895.- €	



	<b>Balance 700</b>	<b>Inspiration 600</b>	<b>Inspiration 500 SLP</b>	<b>Inspiration 500</b>	
<b>PERFORMANCE</b>	Technology	Hybrid Technology	Smart Performance Twin Power	Hybrid Performance SLP	
	LED Technology	-	-	-	
	Low pressure lamps	32 x 180 W / 160 W Sun Light** 14 x 180 W / 160 W Beauty Light**	26 x 160 W / 16 x 120 W Trend	16 x 160 W / 10 x 120 W smartsun Plus 8 x 160 W / 4 x 120 W Trend Advanced	Super: 24 x 120 W / 14 x 120 W Trend Twin: 24 x 160 W / 14 x 120 W Trend
	Facial tanner*	-	4 x 400 W Ultra Performance Plus	3 x 400 W Smart Light Performance (SLP)	3 x 400 W Ultra Performance Plus
	Spaghetti lamps	-	3 x 8 W Trend	2 x 8 W smartsun	2 x 8 W Trend
	Shoulder Tan	-	-	-	-
	Choice of UV intensity Pure Beauty Light treatment	-	-	-	-
	<b>COMFORT</b>	Air conditioning	-	-	-
Ventilation		Comfort Cooling Plus	Comfort Cooling Plus	Comfort Cooling Plus	Comfort Cooling Plus
Aqua Fresh / Aroma		-	-	-	-
Sound		3D-Sound (o)	3D-Sound (o)	3D-Sound (o)	3D-Sound (o)
Smart phone connection		Bluetooth® Connect (o) MP3 AUX (o)	MP3 AUX (o)	MP3 AUX (o)	MP3 AUX (o)
Acrylic base		Frosted Acrylic (200 x 80 cm)	Bodyform Plus (225 x 82 cm)	Bodyform Plus (225 x 82 cm)	Bodyform Plus (225 x 82 cm)
<b>HANDLING</b>	E.V.A. Voice control	-	-	-	-
	External display	-	-	-	-
	Internal display	Smart Control	✓	✓	✓
	NFC Connect	-	✓	-	-
	Voice Guide	✓ (o)	✓ (o)	✓ (o)	✓ (o)
	Set-up Manager	Professional Set-up Manager	-	-	-
	Remote Access	-	-	-	-
	Service Light	-	-	-	-
	Miscellaneous	Including 2 additional lamp sets	-	-	-
	<b>DESIGN</b>	External lighting	LED Light Show	LED Light Show	LED Mood Light
Internal lighting		LED Interior Light	LED Interior Light	LED Interior Light	LED Interior Light
<b>TECHNICAL SPECIFICATIONS</b>	Dimensions closed	226 - 235 x 138 x 141	227 - 237 x 145 x 133	227 - 237 x 145 x 133	227 - 237 x 145 x 133
	Dimensions open (L x W x H in cm)	226 - 235 x 138 x 175	227 - 237 x 145 x 170	227 - 237 x 145 x 170	227 - 237 x 145 x 170
	Required interior cabin dimensions (L x W in cm)	240 x 230	240 x 210	240 x 210	240 x 210
	Max. power consumption with 400/415 V 3N power supply	8,800 W	8,400 W	7,500 W	Super Power: 6,500 W Twin Power: 7,500 W
	Fuse (delayed action)	3 x 25 A	3 x 25 A	3 x 20 A	3 x 20 A
	Weight	500 kg	540 kg	540 kg	540 kg
<b>ART. NO. + PRICES</b>	<b>Art. No. 100003275</b> Hybrid Technology Price: 25,595.- €  <b>Accessories</b> <b>Art. No. 100003707</b> 3D-Sound-Unit incl. Bluetooth® Price: 1,329.- €	<b>Art. No. 100003169</b> Smart Performance incl. NFC Price: 23,345.- €  <b>Accessories</b> <b>Art. No. 100003217</b> 3D-Sound-Unit Price: 1,125.- €	<b>Art. No. 100003447</b> Price: 21,045.- €  <b>Accessories</b> <b>Art. No. 100003217</b> 3D-Sound-Unit Price: 1,125.- €	<b>Art. No. 100003154</b> Super Power Price: 18,545.- €  <b>Art. No. 100003166</b> Twin Power Price: 20,195.- €  <b>Accessories</b> <b>Art. No. 100003217</b> 3D-Sound-Unit Price: 1,125.- €	



	Passion 350-S	Flair 250	Flair 200	Beauty Angel C 28
<b>PERFORMANCE</b>	Technology	Super Power	Super Power	Beauty Light
	Low pressure lamps	38 x 100 W Trend	30 x 100 W Trend	27 x 100 W Trend
	Facial tanner*	3 x 400 W Ultra Performance Plus	3 x 400 W Ultra Performance	1 x 300 W Ultra Performance
	Spaghetti lamps	2 x 8 W Trend	-	-
	Shoulder Tan	-	-	-
Choice of UV intensity Pure Beauty Light treatment	-	-	-	✓
	-	-	-	-
<b>COMFORT</b>	Air conditioning	-	-	-
	Ventilation	Comfort Cooling	Comfort Cooling	Comfort Cooling
	Aqua Fresh / Aroma	-	-	-
	Sound	Stereo Sound (o) Stereo Sound Plus (o)	Stereo Sound (o) Stereo Sound Plus (o)	Stereo Sound (o) Stereo Sound Plus (o)
	Smart phone connection	MP3 AUX (o)	MP3 AUX (o)	MP3 AUX (o)
Acrylic base	Bodyform Plus (215 x 78 cm)	Bodyform Plus (215 x 71 cm)	Bodyform Plus (215 x 71 cm)	Bodyform Plus (215 x 71 cm)
<b>HANDLING</b>	External display	-	-	-
	Internal display	✓	✓	✓
	NFC Connect	-	-	-
	Voice Guide	-	-	-
	Set-up Manager	-	-	-
Miscellaneous	Time Control	Time Control	Time Control 230 V connection (mains plug)	Time Control 230 V connection (mains plug)
<b>DESIGN</b>	External lighting	Mood Light	-	Beauty Design
	Internal lighting	-	-	-
<b>TECHNICAL SPECIFICATIONS</b>	Dimensions closed	215 - 225 x 120 x 123	215 - 225 x 110 x 110	215 - 225 x 110 x 110
	Dimensions open (L x W x H in cm)	215 - 225 x 120 x 158	215 - 225 x 110 x 147	215 - 225 x 110 x 138
	Required interior cabin dimensions (L x W in cm)	240 x 210	240 x 210	240 x 210
	Max. power consumption with 400/415 V 3N power supply	6,000 W	4,900 W	3,500 W
	Fuse (delayed action)	3 x 16 A	3 x 16 A	1 x 16 A
Weight	355 kg	320 kg	320 kg	320 kg
<b>ART. NO. + PRICES</b>	<b>Art. No. 50000769</b> Price: 12,195.- €	<b>Art. No. 100002070</b> Price: 8,445.- €	<b>Art. No. 100001899</b> Super Power Price: 6,845.- €	<b>Art. No. 100002455</b> Price: 8,745.- €
	<b>Accessories</b>	<b>Accessories</b>	<b>Accessories</b>	<b>Accessories</b>
	<b>Art. No. 100002315</b> Stereo Sound Price: 395.- €	<b>Art. No. 100002370</b> PROFILE-Design Anthracite Price: 80.- €	<b>Art. No. 100002369</b> PROFILE-Design Shining Green Price: 83.- €	<b>Art. No. 100002315</b> Stereo Sound Price: 395.- €
	<b>Art. No. 100002312</b> Stereo Sound Plus* Price: 795.- €	<b>Art. No. 100002315</b> Stereo Sound Price: 395.- €	<b>Art. No. 100002315</b> Stereo Sound Plus* Price: 395.- €	<b>Art. No. 100002312</b> Stereo Sound Plus* Price: 795.- €
	<b>Art. No. 100002314</b> Side panel Passion (one part) Price: 119.- €	<b>Art. No. 100002312</b> Stereo Sound Plus* Price: 795.- €	<b>Art. No. 100002312</b> Stereo Sound Plus* Price: 795.- €	<b>Art. No. 100002313</b> Side panel Flair (one part) Price: 119.- €
		<b>Art. No. 100002313</b> Side panel Flair (one part) Price: 119.- €	<b>Art. No. 100002312</b> Stereo Sound Plus* Price: 795.- €	<b>Art. No. 100002313</b> Side panel Flair (one part) Price: 119.- €
			<b>Art. No. 100002313</b> Side panel Flair (one part) Price: 119.- €	
			Lamps: 12 x 1,80 m / 15 x 2,00 m	

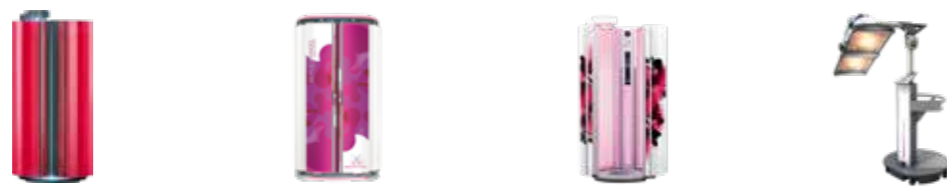
(o) = optional  
\* Stereo Sound Plus includes external audio connection, amplifier, headset and MP3-connect and Auto Play.



	Sunrise 7200	Sunrise 7200	Sunrise 6200	Sunrise 480	
<b>PERFORMANCE</b>	Technologie	Hybrid Light LED (Dynamic Performance)	Smart Performance Dynamic Performance	Smart Performance	
	LED Technology	60 x Beauty Light LEDs	-	-	
	Low pressure lamps	34 x 200 W Trend Advanced 14 x 200 W smartsun Plus	Smart: 48 x 180 W Trend Advanced Dynamic: 48 x 200 W Trend	48 x 180 W Trend Advanced	48 x 180 W Trend Advanced
	Facial tanner*	-	-	-	-
	Choice of UV intensity Pure Beauty Light treatment	Sensitive, Medium, Intensive	-	-	-
<b>COMFORT</b>	Air conditioning	-	-	-	
	Ventilation	Surround Cooling Plus	Surround Cooling Plus	Surround Cooling Plus	
	Aqua Fresh / Aroma	- / ✓	- / ✓	- / ✓	✓ (o) / ✓ (o)
	Sound	3D-Sound	3D-Sound	3D-Sound	3D-Sound (o)
	Smart phone connection	Bluetooth® Connect MP3 AUX	Bluetooth® Connect MP3 AUX	Bluetooth® Connect MP3 AUX	MP3 AUX (o)
Internal dimensions	205 x 77 cm	205 x 77 cm	205 x 77 cm	208 x 86 cm	
Vibra Shape	✓ (o)	Smart - Dynamic: ✓	✓ (o)	✓ (o)	
<b>HANDLING</b>	Internal display	Smart Control	Smart Control	Smart Control	
	NFC Connect	-	-	-	
	Voice Guide	✓	✓	✓	✓ (o)
	Set-up Manager	Professional Set-up Manager	Professional Set-up Manager	Professional Set-up Manager	-
	Miscellaneous	-	-	-	-
<b>DESIGN</b>	External lighting	LED Light Show	LED Light Show	LED Mood Light	
	Internal lighting	LED Interior Light	LED Interior Light	LED Interior Light	
<b>TECHNICAL SPECIFICATIONS</b>	Dimensions closed	124 x 147 x 231	124 x 147 x 231	124 x 145 x 231	
	Dimensions open (L x W x H in cm)	144 x 147 x 231	144 x 147 x 231	144 x 145 x 231	
	Required interior cabin dimensions (L x W in cm)	213 x 215 x 240	213 x 215 x 240	213 x 215 x 240	
	Max. power consumption with 400/415 V 3N power supply	10,200 - 10,300 W	Smart Performance: 8,200 W Dynamic Performance: 10,300 W	8,200 W	10,200 W
	Fuse (delayed action)	3 x 25 A	3 x 20 A	3 x 20 A	3 x 25 A
Weight	400 kg (incl. Vibra Shape 413 kg)	400 kg (incl. Vibra Shape 413 kg)	400 kg (incl. Vibra Shape 413 kg)	365 kg (incl. Vibra Shape 395 kg)	
<b>ART. NO. + PRICES</b>	<b>Art. No. 500001407</b> incl. 3D-Sound, Bluetooth® & Voice Guide Price: 24,345.- €	<b>Art. No. 500001411</b> Smart Performance incl. 3D-Sound, Bluetooth® & Voice Guide Price: 21,445.- €	<b>Art. No. 500001404</b> incl. 3D-Sound, Bluetooth® & Voice Guide Price: 19,995.- €	<b>Art. No. 500000451</b> Price: 15,555.- €	
	<b>Art. No. 500001408</b> incl. 3D-Sound, Bluetooth®, Voice Guide & Vibra Shape Price: 29,445.- €	<b>Art. No. 500001406</b> Dynamic Performance incl. 3D- Sound, Bluetooth® & Voice Guide Price: 23,345.- €	<b>Art. No. 500001405</b> incl. 3D-Sound, Bluetooth®, Voice Guide & Vibra Shape Price: 24,995.- €	<b>Accessories</b>	
		<b>Art. No. 500001403</b> Dynamic Performance incl. 3D-Sound, Bluetooth®, Voice Guide & Vibra Shape Price: 28,395.- €		<b>Art. No. 500000463</b> Aqua Fresh & Aroma Price: 2,349.- €	
				<b>Art. No. 100001841</b> 3D-Sound-Unit Price: 1,145.- €	
				<b>Art. No. 100001843</b> Vibra Shape Price: 4,995.- €	

(o) = optional  
\* Stereo Sound Plus includes external audio connection, amplifier, headset and MP3-connect and Auto Play.





# ADDITIONAL

	Essence 440	Beauty Angel 7200	Beauty Angel CVT 32	Beauty Angel ELT 2
<b>PERFORMANCE</b>				
Technology	Smart Performance	Beauty Light	Beauty Light	Energizing Light Technology
LED Technology	-	-	-	-
Low pressure lamps	44 x 200 W Trend	32 x 180 W Beauty Light	32 x 180 W Beauty Light	2 x 400 W Beauty Light Plus
Facial tanner*	-	-	-	-
Choice of UV intensity	-	-	-	-
Pure Beauty Light treatment	-	✓	✓	✓
Air conditioning	-	-	-	-
Ventilation	Top Cooling	Surround Cooling Plus	Top Cooling (o)	-
Aqua Fresh / Aroma	- / ✓ (o)	- / ✓	- / ✓ (o)	-
Sound	Single Sound Sound Module (o)	3D-Sound	Single Sound Sound Module (o)	-
Smart phone connection	MP3 AUX (o)	Bluetooth® Connect MP3 AUX	MP3 AUX (o)	-
Internal dimensions	205 x 70 cm	205 x 77 cm	205 x 70 cm	-
Vibra Shape	-	✓	✓	-
Internal display	✓	Smart Control	✓	-
<b>HANDLING</b>				
NFC Connect	-	-	-	-
Voice Guide	-	✓	-	-
Set-up Manager	-	Professional Set-up Manager	-	-
Miscellaneous	Time Control	-	Time Control	230 V connection (Typ F) Medical Active certification
<b>DESIGN</b>				
External lighting	-	LED Mood Light	Beauty Design	Mood Light
Internal lighting	Interior Light	LED Interior Light	Standby Lighting	-
<b>TECHNICAL SPECIFICATIONS</b>				
Dimensions closed	110 x 109 x 227	124 x 147 x 231	110 x 109 x 231	68 x 104 x 186
Dimensions open (L x W x H in cm)	110 x 135 x 227	144 x 147 x 231	110 x 135 x 231	-
Required interior cabin dimensions (L x W in cm)	210 x 240 x 232	213 x 215 x 240	210 x 240 x 232	240 x 210
Max. power consumption with 400/415 V 3N power supply	7,400 W (7,600 W incl. air discharge accessories)	6,000 W	5,300 W	900 W
Fuse (delayed action)	3 x 16 A	3 x 16 A	3 x 16 A	1 x 16 A
Weight	202 kg	400 kg (incl. Vibra Shape 413 kg)	196 kg (incl. Vibra Shape)	110 kg
<b>ART. NO. + PRICES</b>	<b>Art. No. 100002594</b> Price: 11,395.- €  <b>Accessories</b> <b>Art. No. 100002544</b> Sound Module* Price: 445.- € <b>Art. No. 100002619</b> Aroma Price: 119.- € <b>Art. No. 1508181-00</b> Connecting wiring 3 x 230 V without neutral wire** Price: 61,50 €	<b>Art. No. 500001533</b> featured as standard Price: 22,785.- €	<b>Art. No. 500001090</b> incl. Vibra Shape vibration training Price: 17,095.- €  <b>Accessories</b> <b>Art. No. 100002543</b> Top Cooling Price: 445.- € <b>Art. No. 100002544</b> Sound Module* Price: 445.- € <b>Art. No. 1508181-00</b> Connecting wiring 3 x 230 V without neutral wire** Price: 61,50 €	<b>Art. No. 100003014</b> Price: 14,845.- €

Description	Prestige Sun Angel Affinity Balance	Price (excl. VAT)	Inspiration	Price (excl. VAT)	Passion	Price (excl. VAT)	Sunrise Beauty Angel 7200	Price (excl. VAT)	Sunrise 480	Price (excl. VAT)	Essence 440 CVT 32	Price (excl. VAT)
<b>Central air discharge socket in Brilliant Silver</b> with direct connection possibility (300 mm Ø) upwards. Channelling the air to the right, to the left or to the rear requires additional use of the curved profile (Art. No. 100001292).	with warm air recovery: 500000872	895.- €	with warm air recovery: 500000892	895.- €	with warm air recovery: 500000870 (manuell)	895.- €	-	-	-	-	-	-
	without warm air recovery: 500000873	735.- €	without warm air recovery: 500000893	735.- €	without warm air recovery: 500000871	735.- €	-	-	-	-	-	-
<b>Central air discharge socket</b> in Brilliant Silver with integrated air discharge motor	-	-	-	-	-	-	-	-	-	-	without warm air recovery: 100002542	735.- €
<b>90° curved profile in Brilliant Silver</b> for routing the air discharge hose to the right, left or rear, including pipe adapter for direct connection to the central air discharge socket. Air ducting possible via direct 300 mm Ø air discharge hose connection.	100001292	185.- €	100001292	185.- €	100001292	185.- €	-	-	100001292	185.- €	-	-
<b>Connecting socket</b> for 300 mm Ø air discharge hose	34503600	24.- €	34503600	24.- €	34503600	24.- €	-	-	34503600	24.- €	-	-
<b>Connection socket</b> for 150 mm Ø air discharge hose	-	-	-	-	-	-	50000942	46.- €	-	-	50000942	46.- €
<b>Air discharge hose</b> 300 mm Ø, flexible, grey, 6 m, with 2 hose clips	34502800	124.- €	34502800	124.- €	34502800	124.- €	-	-	34502800	124.- €	-	-
<b>Air discharge hose, Ø 150 mm</b> , flexible, grey, 6 m, with 2 hose clips	-	-	-	-	-	-	50000940	108.- €	-	-	50000940	108.- €
<b>Air discharge hose connector</b> 300 mm Ø	34502700	31.- €	34502700	31.- €	34502700	31.- €	-	-	-	-	-	-
<b>Add-on kit</b> intermediate acrylic and fan for Affinity 700 Twin Power	1016325-00	675.- €	-	-	-	-	-	-	-	-	-	-
<b>Adapter</b> , from Ø 150 mm to Ø 300 mm	-	-	-	-	-	-	50000941	46.- €	-	-	50000941	46.- €
<b>Audio</b> , Wire set audio incl. channel selection	500000160	46.- €	500000160	46.- €	-	-	-	-	-	-	-	-
<b>Audio</b> , Wire set audio without channel selection	500000161	30.- €	500000161	30.- €	-	-	-	-	-	-	-	-

## Studio-Pilot

<b>Brass tokens</b> , 50 per unit	34005300	36.- €
<b>Chip cards, 4-colour printing</b> , 100 per unit	34009500	345.- €
<b>Chip cards, 4-colour printing</b> , 400 per unit	34524700	1,195.- €
<b>Chip cards, plain</b> , 100 per unit	38000500	289.- €
<b>Salon card</b> (personnel card), 4-colour printing	34010100	15,90 €

## Ergoline manual remote control system

<b>Mikrocomputer MCS III plus</b>	500000456	449.- €
<b>Adapter</b> for connecting MCS controls (only for Sunrise 480)	100001853	252.- €

## Ergoline sensor station

<b>Ergoline sensor station</b>	100003628	3,250.- €
--------------------------------	-----------	-----------

## NFC cards / NFC tags

<b>Personal Comfort Card 4-colour printing</b> , 100 per unit	1014733-01	189.- €
<b>NFC Prof. Set-Up Card 4-colour</b> , 1 piece	1014729-01	2,60 €
<b>NFC tags 4-colour printing</b> , 100 per unit	1014735-00	168.- €



# ERGOLINE SKIN SENSOR

## A STAND-ALONE SOLUTION FOR YOUR STUDIO

With the Ergoline skin sensor you can emphasise your advisory skills and give your customers additional security before their tanning session. The measurement of individual skin sensitivity gives new customers additional confidence. The UV-sensitivity depends not only on the skin type, but also on the status of the actual tanning of the skin.

By measuring the brightest part of the body, for example the inside of the upper arm, the Ergoline skin sensor calculates your customer's UV sensitivity in a few seconds, thus minimizing the risk of sunburn. Via interfaces to leading studio controls you can use the central sensor station for all Ergoline units in your studio.



## INFORMATION

This price list takes effect from January 2021. It will retain validity until a new price list is published. The products offered in this price list are exclusively distributed by JK-International GmbH and their trade partners. The prices quoted are list prices and exclude statutory VAT.

The products indicated in this price list are delivered ex works. Changes in the technical execution and design, price and delivery possibility reserved. All prices for our equipment are excluded time control system.

The products listed must not be exported to or operated in either the USA and Canada. JK-International GmbH shall not accept any producer's liability in this case. It is expressly pointed out that any violation of this ban may subject the exporter and/or operator to high risks of liability.

You may obtain all wearing parts, such as bulbs, lamps, starters, Aqua Fresh & Aroma refit kits as well as cleaning and cosmetic products and consumables from JK-International GmbH, Köhlershohner Strasse 60, 53578 Windhagen, Germany, phone +49 2224/818-0.

## WARRANTY

JK-International GmbH guarantees the purchaser for a period of 24 months starting from the date of delivery that the goods are free from defects which would ruin or reduce their sales value. High-pressure lamps, low-pressure lamps and starters as well as acrylic bases are components that are subject to a process of natural wear. Defect-related claims on part of the purchaser shall be ruled out if the product defect is the result of wear.

### What are the differences to the Sun Angel?

The Sun Angel measures the sensitivity for body and face separately to calculate the optimal UV dose for the respective UV sources. At the sensor station, only one measurement is carried out on the brightest part of the body. As this brightest part generally is lighter than the face, the UV dose is adjusted to this lower value.

Based on the measured UV sensitivity, the Sun Angel determines an optimal mix of UVA and UVB and thus enables the best possible tanning results without the risk of sunburn. With the sensor station, the individual UV dose is achieved through an adapted tanning time.

The sensors are designed for your specific applications. The Sun Angel uses the third generation of sensors, which is particularly robust and hard-wearing. We recommend that the sensor station should be used only by your instructed staff. Since the sensor station is only used by the staff it does not have an additional silicon protection.



## SUITABLE COSMETICS

### Additional turnover and happy customers.

C2 for sunbeds and UPsolute Photofusion for cosmetic skincare with Beauty Light Plus: we have the perfect cosmetic products for your services. With the right care products, you can increase customer satisfaction and achieve attractive additional sales. We will be happy to advise you on successful merchandising in your salon.



### NEW: HYBRID COSMETIC C2 MOUSSE

The new C2 Mousse impresses with high-tech active ingredients and its light texture penetrates the skin particularly quickly. For a particularly pleasant skin feeling! Of course the entire C2 product line is free from animal testing and vegan.



## ORIGINAL LAMPS

### Only the original guarantees 100 % performance.

The tanning result is only as good as the lamp in combination with the corresponding solarium. The original light sources from the market leader are perfectly adapted to your Ergoline sunbeds. Our development department guarantees in close collaboration with the leading lamp producers the optimal performance of lamps in the solariums. In this connection, all variables, e.g. acrylic bases, distance of lamps to the body and cooling are taken into consideration to achieve the best performance. For all-round beautiful tanning results and enthusiastic customers.



[www.jk-licht.com/en/business-area/0\\_3\\_configurator/](http://www.jk-licht.com/en/business-area/0_3_configurator/)

# SOLARFIX CARE

*fast. clean. safe*

PERFECT HYGIENE IN YOUR SALON

## NEW: SOLARFIX CARE

### Fast, smooth and safe.

Perfect hygiene is a basic requirement for every studio. Solarfix Care is the latest generation of our reliable rapid disinfection cleaner and protects reliably from bacteria, viruses, spores and fungi. It meets the high demands of surface disinfection (VAH / DGHM) and is virucidal in accordance with EN 14476. Solarfix Care consists out of water and certified salt and contains no alcohol, aldehyde, phenol or surfactant. This makes Solarfix Care particularly environmentally friendly and gentle on surfaces and skin. The dermatological test at Dermatest was passed with "excellent".

- Reliable protection of users
- Virucidal according to EN 14476
- Natural ingredients
- Particularly environmentally friendly
- Gentle on surfaces
- Dermatologically tested
- By using Solarfix Care undiluted with the functional spray pump it can be utilised as hand disinfection.



## MADE IN GERMANY

### Guaranteed quality.

All components we use in our sunbed production are made of high-quality materials, which are all tested for resistance against UV light, cleaning fluids and other potential hazards as well as potential health risks. Our state-of-the-art manufacturing technologies and qualified staff ensure especially high quality workmanship. Every Ergoline sunbed undergoes a variety of functional tests before it leaves the factory. We were the first sunbed manufacturer to be certified by TÜV for compliance with the EN ISO 9001 quality standard, confirming our claim to quality.



QUALITY  
MADE IN GERMANY

## PROFESSIONAL ADVERTISEMENT

### Marketing download area.

Whether you need lifestyle or equipment images, the Ergoline logo, instagram stories, posters or training for your staff, on the marketing tool you can find everything you need to promote your Ergoline equipment. Please note that the download area is password protected. To receive a password contact your official Ergoline dealer. Marketing download area: <https://marketing.jk-group.net>



## LET'S GET SOCIAL

### Follow our digital adventures.

Do you want to stay updated on all things Ergoline? Make sure to follow us on social media. Discover our best features, Ergoline lifestyle tips & tricks and inspiring slogans. Never miss a thing: @ErgolineWorld. Find us on Facebook, Instagram, Youtube and TikTok.





## UVC AIR PURIFICATION: MORE SAFETY & TRUST

### Proven effectiveness of over 99.99% on corona viruses

Recent studies show that CoV-2 viruses survive for several hours as infectious aerosols in the air and can be distributed throughout the room. In this way, a single person can infect numerous other people ("superspreader"), although all hygiene measures are observed. With pure UVC air sterilisation, you neutralise over 99.99 % of Corona viruses from the air and thus increase security in your salon.



#### Our recommendation for tanning studios: pure Steribase

- Ozone-free UVC air disinfection from medicine
- Risk of infection and sickness rates are reduced
- Security and trust for employees and customers
- Absolutely safe technology without chemicals
- Effective air exchange with new ventilation technology
- Disinfects 450 m3 per hour - equivalent to rooms of 180 m2
- Plug & Play: The pure Steribase 450 is ready for immediate use

For further information, please visit:  
[www.pure-airhygiene.com](http://www.pure-airhygiene.com)

## MARKETING SUPPORT

### Successful advertising with the number 1.

Attract attention and bring more lifestyle to your studio with Ergoline! In our web shop, you will find a large selection of give-aways, studio decorations and other printed advertising material which can be ordered via your official Ergoline dealer: [www.ergoline-webshop.com](http://www.ergoline-webshop.com)



## MEDICAL ACTIVE

### Certified light technologies.

Selected Ergoline and Beauty Angel models have been awarded the Medical Active certification for innovative technologies. The international healthcare network identifies special products and services, which promote bio-positive benefits and support the long term well-being of users. Thanks to the Medical Active certification, you can target new customer groups, stand out from the competition and underline the bio-positive effects of your services (DE/AT/CH).



## JK-GROUP NUMBER 1

### Your partner for success.

We can supply everything you need for the successful operation of your salon. The entire team will be happy to show you how you can attract new customers with attractive additional products. If you should encounter any technical problems, our Technical Customer Services team provides fast and efficient support. For more information on all JK products, request our free Lightstyle Business Magazine.



# GLOSSARY

## SUNBEDS

### #

#### 3-ZONE VENTILATION

Addition to Surround Cooling Plus: ventilation can be adjusted separately for feet, body and face.

#### 3D-SOUND

Sound system with two loudspeakers, subwoofer, SD card slot and AUX connection.

### A

#### ACTIVATING LIGHT TECHNOLOGY

Blue LEDs for activating the organism and intensifying the immediate tanning effect.

#### ADVANCED PERFORMANCE

Conventional power supply units, with Super, Twin or Turbo Power.

#### AIR CONDITION PLUS

Cooling system for the base and tanning tunnel.

#### AQUA FRESH

Refreshment with a fine mist in the facial and body area.

#### AROMA

Range of fragrances for relaxation, including fragrance for the cabin depending on the model.

### B

#### BASIC COOLING

Adjustable facial ventilation.

#### BEAUTY LIGHT

UV-free, red light for skincare.

#### BEAUTY LIGHT LED

LED technology with UV-free, red light for skincare.

#### BEAUTY LIGHT PLUS

UV-free light with a particularly wide active spectrum (570 – 830 nm approx.).

#### BEAUTY SELECT

Selection of tanning programs and UV-free skincare.

#### BEAUTY LIGHT COMPLETE

Skincare incl. Beauty Light LEDs for face and body.

#### BLUETOOTH CONNECT®

Connection to smart phones via Bluetooth®.

#### BODY SHAPE

Ergonomically designed acrylic base with integrated headrest.

#### BODYFORM PLUS

In entry-level models ergonomically designed base.

### C

#### CINEMATIC SOUND

High-quality sound system incl. SD card slot and Bluetooth® Connect.

#### CLIMATRONIC

Climate control system with cooling and heating.

#### CLIMATRONIC PLUS

Climatronic with closed tanning tunnel.

#### COMFORT COOLING

Ventilation with standard flow of air for head and body.

#### COMFORT COOLING PLUS

Dual circuit ventilation system with ventilation individually adjustable for head and body.

#### CONTROL CENTER

External display for adjusting comfort and intensity.

### D

#### DYNAMIC PERFORMANCE

Dimmable, electronic ballasts for always 100% reliable performance.

### E

#### ELECTRONIC VOICE ASSISTANT (E.V.A.)

Voice control for operating the sunbed using voice commands.

#### EXTERIOR TOUCH CONTROL

Large 10" external touch display with video function.

#### ENERGIZING LIGHT TECHNOLOGY (ELT)

Special high-pressure technology for a wide active spectrum (cf. "Beauty Light Plus").

#### ERGO LINE BLUE

Low-pressure lamps with a combination of UV and blue light.

### F

#### FROSTED ACRYLIC

Frosted, ergonomically designed acrylic base with integrated headrest.

### H

#### HYBRID PERFORMANCE

Combination of two types of lamps (UV + Beauty Light).

#### HYBRID PERFORMANCE (LED)

Combination of two types of lamps (UV + Beauty Light) and additional LED technology.

### I

#### INDIVIDUAL PERFORMANCE

Individual UV spectrum (UV-A / UV-B) of the Sun Angel.

#### INTERIOR LIGHT

Mood lighting for the interior in stand-by mode.

#### INTERIOR LIGHT LED

Mood lighting for the interior in stand-by mode with LEDs.

#### INTERIOR TOUCH DISPLAY

Large 7" internal touch display for easy operation during the tanning session.

### L

#### LED LIGHT SHOW

LED mood lighting with a selection of colours and lighting effects.

#### LED MOOD LIGHT

LED mood lighting with static colours.

### M

#### MOOD LIGHT

Illumination in the chassis with LEDs for some models.

#### MP3 AUX

MP3 player/smartphone connection with audio cable.

#### MULTI RELAX

Ergonomically designed acrylic base with integrated headrest and foot supports for a seamless tan.

### N

#### NFC CONNECT

NFC interface for the easy transfer of comfort and device settings.

### P

#### PERSONAL SUNSTYLE

Selection of various UV intensities.

#### PROFESSIONAL SET-UP MANAGER

Easy device setting on the large internal or external display.

#### PROFESSIONAL SET-UP MANAGER PLUS

Extended easy device setting on the external touch screen.

#### PURE AIR UVC PURIFICATION

The UVC technology neutralises viruses and micro-organisms in the air flow of the 3-zone ventilation.

### S

#### SENSOR

Intelligent skin sensor to measure individual UV sensitivity.

#### SERVICE LIGHT

Illuminated base to make service and maintenance easier.

#### SHOULDER TAN 2 x 240 W

UV shoulder tanners with Ultra Performance technology.

#### SHOULDER TAN 7 x 25 W

UV shoulder tanners with low pressure lamps.

#### SHOULDER TAN LED HYBRID

Shoulder tanners with Beauty Light and UV LEDs, as well as two UVB compact lamps.

#### SHOULDER TAN LED UV

Shoulder tanners with UVA LEDs and two UVB compact lamps.

#### SINGLE SOUND

Loudspeaker with possibility of connection to studio channel.

#### SMART CONTROL

Glass control panel with display.

#### SMART LIGHT PERFORMANCE (SLP)

Facial tanning technology with a combination of UV and Beauty Light.

#### SMART PERFORMANCE

Static electronic ballasts with energy-saving function.

#### SMARTSUN

Low pressure lamps with a combination of UV and Beauty Light.

#### SMARTSUN SHOULDER TAN

Shoulder Tan with smartsun low pressure lamps.

#### SOUND MODULE

Amplifier, headset and MP3 connection as an addition to Single Sound.

#### SPECTRA

LED facial tanner from Ergoline.

#### STEREO SOUND

Two loudspeakers and external AUX music connection.

#### STEREO SOUND PLUS

Stereo Sound which can be operated via the control panel.

#### SURROUND COOLING PLUS

Equable cooling with ventilation channels over the entire body.

### T

#### TIME CONTROL

Integrated timer function for operation without a separate studio control unit.

#### TOP COOLING

Ventilation system via a fan in the top of vertical sunbeds.

### U

#### ULTRA PERFORMANCE

UV facial tanners featuring a glass reflector and filter glasses with special coating.

#### ULTRA PERFORMANCE PLUS

Ultra Performance technology with additional UVB spaghetti lamps.

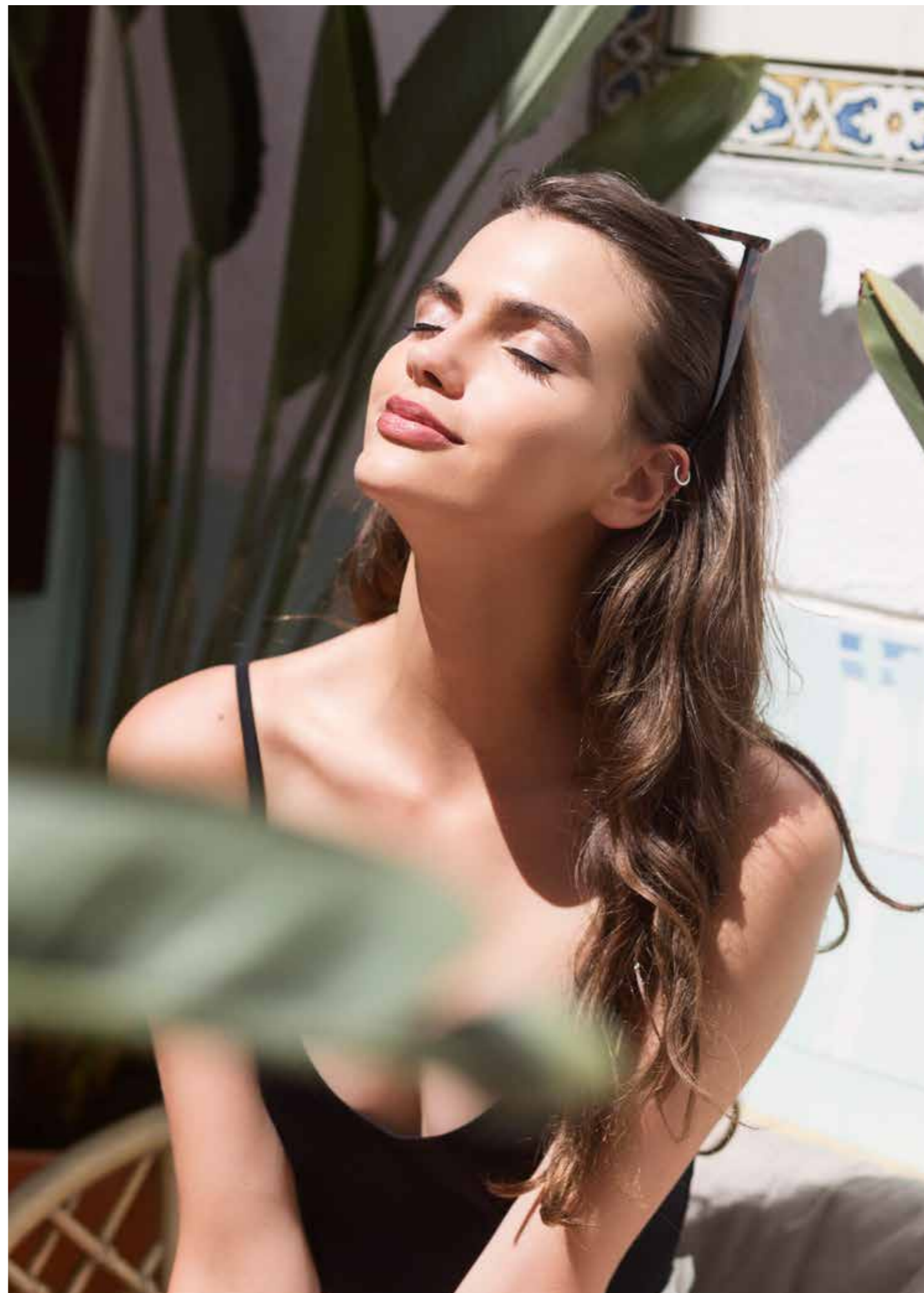
### V

#### VIBRA SHAPE

Patented vibration plate with side-alternating vibration for vertical sunbeds.

#### VOICE GUIDE

Explanation of all functions by a pleasant voice.



# SHARE YOUR ERGOLINE **EXPERIENCE**



@ErgolineWorld

*Ergoline*