



Easy on your feet.

# Catalogue 2023





# Contents

---

6	We are SÜDA
8	Vision
11	Goal
12	Production
14	Foot care equipment
21	Flexi Line foot care equipment
22	Suction technology
32	Wet technology
41	Accessories
47	Mobile foot care
48	SÜDA mobility trolley system

---



---

53

## Treatment chairs

---

56

Entry-level model AF1

---

59

SÜDA Move series

---

65

Pioneer

---

69

Podo Xdream series

---

79

## Practice equipment

---

80

Preparation and equipment trolley

---

97

## Instruments

---

98

SÜDA Expert Instruments

---

107

## SÜDA CARE Foot care products

---

109

Product lines

---

# We are SÜDA

## Your partner and pioneer for podiatry and foot care

A light-footed gait is a symbol of our physical well-being. The tradition of our company has always been to focus on the foot in its entirety.

We are your lifelong partner when it comes to supporting you in your work with the most innovative and multi-award-winning technology. Right from the start.

SÜDA has been dedicated to developing exclusive technologies for maintaining foot health for almost 100 years and offers a comprehensive high-quality product range and well-harmonised practice equipment.

The focus of our research is on maintaining foot health. We stand for lasting modernity worldwide in combination with innovative tradition: Made in Germany.

Walk easier with SÜDA.







# Our vision

## Easy on your feet your entire life

SÜDA is holistically dedicated to health, environment and society. We promote young talent through training, further education and competitions, as well as by assuming social and corporate responsibility. The design, development and production of SÜDA equipment originate directly from our company. They are not only perfectly matched to the specific needs of our customers, but also integrate industry standards and norms as a matter of course.

SÜDA manufactures its products in an energy-saving and clean way and our particularly climate-friendly shipping takes corporate responsibility into account.







# Our goal

## Remaining mobile into old age

Being mobile into old age delivers freedom, well-being and independence. Doing something good for your feet strengthens your immune system and your health.

Foot care and podiatry are an indispensable part of health care and serve each individual as well as society as a whole. We support you and your clients in taking care of their body well to increase their well-being. Let's make sure we give our feet the care they need!

SÜDA will help you achieve this goal.



# Our production

## Made in Germany

From raw steel to the finished treatment chair, from the circuit board to the finished device: Our products are manufactured by our employees at the company's own production site near Leipzig. Deliveries of goods at home and abroad leave our modern logistics centre every day, as do a large number of large goods.

On request our all-round carefree package includes: Delivery, assembly and professional instruction in the functionality of the goods on your premises by our staff. We provide a two-year guarantee on our technical brand products and offer you reliable and safe products. Our factory customer service provides comprehensive service and fast, competent handling of maintenance, inspection or repair. For your downtime-free treatment process during service hours, we provide a free loan unit whenever possible.

The company is certified as a medical device manufacturer



MD 574677





---

21

## Flexi Line foot care equipment

---

22

Foot care equipment with suction technology

---

32

Foot care equipment with wet technology

---

41

## Accessories

---

# Foot care equipment

## A tradition of innovation

SÜDA is probably the oldest and most steeped-in-tradition foot care brand when it comes to apparatus system technology . SÜDA developed the first foot care device with integrated suction. The company also took a leading role in introducing the first wet technology unit in cooperation with its partners. This tradition brings with it an obligation to innovate. SÜDA continues to work steadily on innovative solutions across the entire spectrum of foot care and podiatry.

# Flexi Line - Suction Technology

MADE IN  
GER



Pedo Sprint  
Eco SP

> p. 23

Pedo Sprint  
50 SP

> p. 24

Pedo Sprint  
100 SP

> p. 25

CATEGORY	Suction technology	Suction technology	Suction technology
<b>HAND PIECE</b>			
<b>SPEED (RPM)</b>	6,000 - 16,000	6,000 - 25,000	6,000 - 40,000
<b>LEFT/RIGHT ROTATION</b>	No	Yes	Yes
<b>DIAMETER</b>	23.5 mm	23.5 mm	23.5 mm
<b>WEIGHT</b>	119 g	119 g	112 g
<b>LENGTH</b>	134 mm	134 mm	134 mm
<b>LIGHTING FUNCTION</b>	No	No	No
<b>CONTROL UNIT</b>			
<b>MAX. SUCTION POWER</b>	180 l/min	180 l/min	180 l/min
<b>NOISE LEVEL</b>			
<b>AT MIN. SUCTION POWER</b>	53 db(A)	53 db(A)	53 db(A)
<b>AT MAX. SUCTION POWER</b>	60 db(A)	60 db(A)	60 db(A)
<b>DIGITAL DISPLAY</b>	No	Partial	Yes
<b>MEMORY FUNCTION</b>	No	No	3 memories
<b>OPTIONAL FOOT SWITCH</b>	No	Yes	Yes
<b>WIDTH</b>	220 mm	220 mm	220 mm
<b>DEPTH</b>	180 mm	180 mm	180 mm
<b>HEIGHT</b>	140 mm	140 mm	140 mm
<b>WEIGHT</b>	3 kg	3 kg	3 kg
<b>ELECTRICAL CONNECTION</b>	220-240 V / 50 - 60 Hz	220-240 V / 50 - 60 Hz	220-240 V / 50 - 60 Hz





SÜDA Vac S

&gt; p. 26


NEW  
SÜDA V eco

&gt; p. 28


NEW  
SÜDA V

&gt; p. 30

CATEGORY	Suction technology	Suction technology	Suction technology
<b>HAND PIECE</b>			
<b>SPEED (RPM)</b>	6,000 – 40,000	6,000 – 40,000	6,000 – 40,000
<b>LEFT/RIGHT ROTATION</b>	Yes	Yes	Yes
<b>DIAMETER</b>	23.5 mm	23.5 mm	23.5 mm
<b>WEIGHT</b>	112 g	112 g	112 g
<b>LENGTH</b>	134 mm	134 mm	134 mm
<b>LIGHTING FUNCTION</b>	No	No	No
<b>CONTROL UNIT</b>			
<b>MAX. SUCTION POWER</b>	210 l/min	200 l/min	200 l/min
<b>NOISE LEVEL</b>			
<b>AT MIN. SUCTION POWER</b>	45 db(A)	45 db(A)	45 db(A)
<b>AT MAX. SUCTION POWER</b>	49 db(A)	48 db(A)	48 db(A)
<b>DIGITAL DISPLAY</b>	Yes	Yes	Yes
<b>MEMORY FUNCTION</b>	3 memories	3 memories	3 memories
<b>OPTIONAL FOOT SWITCH</b>	Yes	Yes	Yes
<b>WIDTH</b>	240 mm	240 mm	240 mm
<b>DEPTH</b>	226 mm	227 mm	227 mm
<b>HEIGHT</b>	126 mm	122 mm	122 mm
<b>WEIGHT</b>	3.6 kg	1.9 kg	1.9 kg
<b>ELECTRICAL CONNECTION</b>	110-240 V / 50 - 60 Hz	110-240 V / 50 - 60 Hz	110-240 V / 50 - 60 Hz

# Flexi Line - Wet Technology

MADE IN  
GER



CATEGORY	Wet technology	Wet technology	Wet technology
Hand pieces for newcomers or less than 5 treatments per day			

## HAND PIECE

SPEED (RPM)	max. 30,000	max. 40,000	max. 40,000
LEFT/RIGHT ROTATION	Yes	Yes	Yes
DIAMETER	22 mm	22 mm	22 mm
WEIGHT	89 g	105 g	98 g
LENGTH	104 mm	104 mm	104 mm
LIGHTING FUNCTION	No	no	yes

## CONTROL UNIT

DIGITAL DISPLAY	Yes	Yes	Yes
MEMORY FUNCTION	3 memories	3 memories	3 memories
OPTIONAL FOOT SWITCH	Yes	Yes	Yes
WIDTH	264 mm	264 mm	264 mm
DEPTH	245 mm	245 mm	245 mm
HEIGHT	166 mm	166 mm	166 mm
WEIGHT	3.4 kg	3.4 kg	3.4 kg
ELECTRICAL CONNECTION	230 V / 50 Hz	230 V / 50 Hz	230 V / 50 Hz

MADE IN  
GER



**NEW**  
Pedospray  
PX 65  
> p. 37



**NEW**  
Pedospray  
PX 65 L  
> p. 38



**NEW**  
Pedospray  
NLX nano  
> p. 39

CATEGORY	Wet technology	Wet technology	Wet technology
Hand pieces for continuous use and more than 5 treatments per day			

#### HAND PIECE

SPEED (RPM)	max. 40,000	max. 40,000	max. 40,000
LEFT/RIGHT ROTATION	Yes	Yes	Yes
DIAMETER	20 mm	20 mm	20 mm
WEIGHT	65 g	68 g	61 g
LENGTH	94 mm	94 mm	70 mm
LIGHTING FUNCTION	no	yes	yes

#### CONTROL UNIT

DIGITAL DISPLAY	Yes	Yes	Yes
MEMORY FUNCTION	3 memories	2 memories	3 memories
OPTIONAL FOOT SWITCH	Yes	Yes	Yes
WIDTH	264 mm	264 mm	264 mm
DEPTH	245 mm	245 mm	245 mm
HEIGHT	166 mm	166 mm	166 mm
WEIGHT	3.4 kg	3.4 kg	3.4 kg
ELECTRICAL CONNECTION	230 V / 50 Hz	230 V / 50 Hz	230 V / 50 Hz





# Flexi Line

## Flexible treatment equipment for foot care and podiatry

With the Flexi Line devices, SÜDA probably offers the widest and most differentiated range of foot care equipment in the field of suction and wet technology. The range includes both equipment with an excellent price-performance ratio for basic foot care treatment and systems with the highest performance and specialisation potential, primarily for use in the field of professional foot care. SÜDA Flexi Line equipment is suitable for stationary practical use as well as for mobile use. SÜDA has developed a medical device for use in podiatry, which is specially designed to treat medical indications.

# Suction technology

## Flexi Line



Since the first foot care with integration suction was developed, SÜDA has been optimising these technologies, such as the successful Pedito Sprint range, in close cooperation with chiropodists and podiatrists. At the same time, new technologies, such as the SÜDA Vac S, are revolutionising the market again and again.

# Pedo Sprint Eco silentpower

With the Pedo Sprint Eco SP, we are responding to the desire for a simple and powerful foot care unit, which is characterised by ingeniously simple operation and a sensational price-performance ratio. No compromises were made when it comes to the quality of the components used in the Pedo Sprint Eco.

## FEATURES

- Compact, easy-to-clean housing with disinfectable surfaces
- Micromotor hand piece with flexible suction hose and dust cover
- Proven centrifugal clamping for fast cutter changes
- Analogue rotary control for suction power and cutter speed
- Side-mounted hand piece holder
- Wired foot switch (optionally available)



1936	Pedo Sprint Eco SP
------	--------------------

## ACCESSORIES

8926	"Mobile" foot care case
8211.024	Foot switch, wired
8336	Hand piece holder
8415.2	Micropore dust bag, 1 pack of 5 pieces
1997.001	Interchangeable collet set
35600	Interchangeable filter silentpower

## SCOPE OF DELIVERY

- Foot care device Pedo Sprint Eco SP  
incl. suction hand piece
- 1 Micropore dust bag (8415.2)
- Mains cable



Case available

## TECHNICAL DATA

**Control unit:** Electrical connection: 220-240 V, 50-60 Hz | Suction power max.: 180 l/min | Noise level: 60 db(A) at 100 % and 53 db (A) at 20 % suction power | Dimensions: W 250 x H 185 x D 140 mm (incl. hand piece holder) | Weight: 3 kg

**Micromotor hand piece:** Speed: 6,000 - 16,000 rpm | Dimensions: Ø 23.5 x L 134 mm | Weight: 119 g, with hose connection 340 g



# Pedo Sprint 50 silentpower

In the Pedo Sprint 50 SP with a maximum micromotor speed of 25,000 rpm the focus is on high torque. The unit is characterised by particularly strong pulling power especially in the lower speed range, For this reason, it is also excellently suited for use with larger instruments, such as cap grinders.



Case available

### FEATURES

- Compact, easy-to-clean housing with disinfectable surfaces
- Micromotor hand piece with flexible suction hose and dust cover
- Proven centrifugal clamping for fast cutter changes
- Operation via keyboard for controlling suction power and cutter speed
- Display for digital speed indication
- Right/left rotation
- Dust bag change indicator
- Side-mounted hand piece holder
- Wired foot switch (optionally available)

1946	Pedo Sprint 50 SP
------	-------------------

### ACCESSORIES

8926	"Mobile" foot care case
8913.12	"Miniprax" foot care case
8211.024	Foot switch, wired
8336	Hand piece holder
8415.2	Micropore dust bag, 1 pack of 5 pieces
1997.001	Interchangeable collet set
35600	Interchangeable filter silentpower

### SCOPE OF DELIVERY

- Foot care device Pedo Sprint 50 SP incl. suction hand piece
- 1 Micropore dust bag (8415.2)
- Mains cable

### TECHNICAL DATA

**Control unit:** **Electrical connection:** 220-240 V, 50-60 Hz | Suction power max.: 180 l/min | Noise level: 60 db(A) at 100 % and 53 db (A) at 20 % suction power | Dimensions: W 250 x H 140 x D 185 mm (incl. hand piece holder) | Weight: 3 kg

**Micromotor hand piece:** Speed: 6,000 - 25,000 rpm | Dimensions: Ø 23.5 x L 134 mm | Weight: 119 g, with hose connection 340 g

# Pedo Sprint 100 silentpower

The large, clear LCD display of the Pedo Sprint 100 SP shows all important operating parameters such as suction power, speed, direction of rotation, as well as maintenance and repair instructions. The “thinking” electronics reminds you when a dust bag and filter change is due and also points out maintenance dates in good time.

## FEATURES

- Compact, easy-to-clean housing with disinfectable surfaces
- Micromotor hand piece with flexible suction hose and dust cover
- Proven centrifugal clamping for fast cutter changes
- ON/OFF button directly on the hand piece
- Operation via keyboard for controlling suction power and cutter speed
- Memory function for saving settings
- Right/left rotation
- Display for digitally showing suction power, speed, direction of rotation, dust bag change, maintenance/repair
- Side-mounted hand piece holder
- Wired foot switch (optionally available)

1956	Pedo Sprint 100 SP
------	--------------------

## SCOPE OF DELIVERY

- Foot care device Pedo Sprint 100 SP incl. suction hand piece
- 1 Micropore dust bag (8415.2)
- Mains cable

## TECHNICAL DATA

**Control unit:** Electrical connection: 220-240 V, 50-60 Hz | Suction power max.: 180 l/min | Noise level: 60 db(A) at 100 % and 53 db (A) at 20 % suction power | Dimensions: W 250 x H 140 x D 185 mm (incl. hand piece holder) | Weight: 3 kg

**Micromotor hand piece:** Speed: 6,000 - 40,000 rpm | Dimensions: Ø 23.5 x L 134 mm | Weight: 112 g, with hose connection 317 g



Case available

## ACCESSORIES

8926	“Mobile” foot care case
8913.12	“Miniprax” foot care case
8211.024	Foot switch, wired
8336	Hand piece holder
8415.2	Micropore dust bag, 1 pack of 5 pieces
1997.001	Interchangeable collet set
35600	Interchangeable filter silentpower

# SÜDA Vac S

The quiet all-rounder



2 years of warranty



Made in Germany



Fast delivery

## Quietest drying technology unit

Whisperingly quiet - only 49 db at 100 % suction power. Listen to a sample at: [sueda.de/leiserevolution](https://sueda.de/leiserevolution)

## Highest suction power

Up to 210 l/min power with up to 40,000 rpm

## Makes working easy

Fatigue-free work thanks to perfect ergonomics and feather-light hand piece (112 g)

## Maintenance-free work

Thanks to the use of EC motors and robust construction. 2 years of warranty

## Simple to operate

User-friendly control display including 3 memory functions

## FURTHER ADVANTAGES

- Right/left rotation
- Easy to clean (disinfectable surfaces)
- Wired foot switch (optionally available)
- Easy filter change
- Side-mounted hand piece holder

## IDEALLY SUITED FOR

- professional and powerful working possible while your clients are maximally relaxed.

SCOPE OF DELIVERY

1997	SÜDA Vac S incl. suction hand piece, 5 Micropore dust bags (8415.2), mains cable
1997.1	SÜDA Vac S with wireless foot switch incl. suction hand piece, 5 Micropore dust bags (8415.2), mains cable



**Note:**  
Suitable for mobile use.

ACCESSORIES AND SERVICE ARTICLES

8926	"Mobile" foot care case
8211.024	Foot switch, wired
8336	Hand piece holder
8415.2	Micropore dust bag, 1 pack of 5 pieces
1997.001	Interchangeable collet set
36077	Interchangeable filter SÜDA Vac S

HAND PIECE

- Feather-light, slim and easy-to-grip hand piece for fatigue-free work
- Convenient on/off switch directly on the hand piece
- Quiet, powerful micromotor (brushless)
- Cutter can be changed quickly thank to proven cen trifugal force clamping technology
- Suction power is optimally used thanks to "all-round" suction performance
- Dental suction hose extremely flexible and soft



TECHNICAL DATA

**Control unit:** Electrical connection - 110-240 V, 50-60 Hz; power: 160W; suction power max.: 210 l/min;  
Noise level: 49 db(A) at 100% and 45 db(A) at 20% power; dimensions: W 275 x H 125 x D 225 mm  
(incl. hand piece holder); compact, easy to clean, with disinfectable surfaces; weight 3.5 kg

**Micromotor hand piece:** Speed: 6,000 - 40,000 rpm; dimensions: Diameter 23.5 x L 134 mm; weight: 112g,  
with hose connection 317 g; centrifugal clamping for quick cutter change



# NEW SÜDA V eco

High quality and compact



2 years of warranty



Made in Germany

## Proven technology at a low price:

Easy-to-operate rotary knobs for rotation speed and suction power

## Ergonomic

Extended hose (1.5 m) and uncomplicated hand piece attachment

## Low weight

Ideally suited for mobile use

## Whisperingly quiet

only 48 db at 100 % suction power

## Powerful

Speed range between 6,000 and 40,000 rpm  
Suction power of max. 200 l/min

## Durable

Use of proven motor technology to ensure maximum longevity

## FURTHER ADVANTAGES

- Right and left rotation adjustable via simple button
- Can be cleaned with wipe disinfection
- Wired foot switch (optionally available)
- Hand piece button for pausing treatment
- Warning message when dust bag is full
- Maintenance message when the maintenance interval is reached
- Dust bag can be changed easily thanks to innovative locking mechanism
- Easy filter change

## IDEALLY SUITED FOR

- professional and powerful working possible while your clients are maximally relaxed.

SCOPE OF DELIVERY

1998.1	SÜDA V eco incl. suction hand piece, 5 dust bags, power supply unit with cable, cleaning brush
--------	---



**Note:**  
Suitable for mobile use.

ACCESSORIES AND SERVICE ARTICLES

8926	“Mobile” foot care case (adapter necessary for adjusting the unit)
8926.1	Adapter necessary for adjusting the SÜDA V eco
8211.024	Foot switch, wired
8415.2	Micropore dust bag, 1 pack of 5 pieces
1997.001	Interchangeable collet set

HAND PIECE

- Feather-light, slim and easy-to-grip hand piece for fatigue-free work
- Convenient on/off switch directly on the hand piece
- Quiet, powerful micromotor (brushless)
- Cutter can be changed quickly thanks to proven centrifugal force clamping technology
- Suction power is optimally used thanks to “all-round” suction performance
- Dental suction hose extremely flexible and soft

TECHNICAL DATA

**Control unit:** Electrical connection - 110-240 V, 50-60 Hz; power: 150W; suction power max.: 200 l/min;  
Noise level: 48 db(A) at 100 % suction power; dimensions: W 240 x H 122 x D 227 mm (incl. hand piece holder);  
compact, easy to clean, with disinfectable surfaces; weight: 1.9 kg (without power supply unit)

**Micromotor hand piece:** Speed: 6,000 - 40,000 rpm; dimensions: Diameter 23.5 x L 134 mm; weight: 112g,  
with hose connection 317 g; centrifugal clamping for quick cutter change

# NEW SÜDA V

Quality meets innovation

## NOTE

Medical device approval in progress



## Foot care has never been so innovative!

Touch available at last! Maximum user friendliness thanks to touch operation. Can be read from any angle thanks to large LCD display (7 inch).

## Self-explanatory

The unit explains everything important to you when you first start it up: Never look up the speed again, select your cutter and the treatment parameters are set automatically.

Change the dust bag? Connect battery? Change collet? - No problem, your device shows you a video tutorial

## Ergonomic

Extended hose (1.5 m) and uncomplicated hand piece attachment

## Mobile

No heavy lifting with the lightest SÜDA unit

## Individual

Start-up parameters, key tones, screen brightness, lock PIN and much more can be adjusted

## Memory buttons

Save your parameters and set the key name individually in 5 buttons



2 years of warranty



Made in Germany

## FURTHER ADVANTAGES

- Flexible - battery optionally available
- We're getting even quieter - only 48 db(A) at 100 % suction power
- Speed range between 6,000 and 40,000 rpm
- Suction power of max. 200 l/min
- Right/left rotation
- Can also be operated with disposable gloves
- Proven motor technology is used to ensure maximum durability
- Can be cleaned with wipe disinfection
- Wired foot switch (optionally available)
- Hand piece button to pause treatment
- Call-back: Your device sends us a call-back message
- Remote maintenance: Extend your warranty with easy remote maintenance
- Dust bag can be changed easily thanks to innovative locking mechanism

## IDEALLY SUITED FOR

- professional and powerful working possible while your clients are maximally relaxed.

SCOPE OF DELIVERY

1998.2	SÜDA V incl. suction hand piece, 5 dust bags, power supply unit with cable, cleaning brush
--------	---



**Note:**  
Suitable for mobile use.

ACCESSORIES AND SERVICE ARTICLES

8926	“Mobile” foot care case (adapter necessary for adjusting the unit)
8926.1	Adapter necessary for adjusting the SÜDA V
8211.024	Foot switch, wired
8336	Hand piece holder
8415.2	Micropore dust bag, 1 pack of 5 pieces
1997.001	Interchangeable collet set

HAND PIECE

- Feather-light, slim and easy-to-grip hand piece for fatigue-free work
- Convenient on/off switch directly on the hand piece
- Quiet, powerful micromotor (brushless)
- Cutter can be changed quickly thanks to proven centrifugal force clamping technology
- Suction power is optimally used thanks to “all-round” suction performance
- Dental suction hose extremely flexible and soft

TECHNICAL DATA

**Control unit:** Electrical connection - 110-240 V, 50-60 Hz; power: 150W; suction power max.: 200 l/min;  
Noise level: 48 db(A) at 100% suction power; dimensions: W 240 x H 122 x D 227 mm (incl. hand piece holder); compact, easy to clean, with disinfectable surfaces; 1.9 kg (without power supply unit)

**Micromotor hand piece:** Speed: 6,000 - 40,000 rpm; dimensions: Diameter 23.5 x L 134 mm; weight: 112g, with hose connection 317 g; centrifugal clamping for quick cutter change



# Wet technology

## Flexi Line



SÜDA has been offering a wide range of wet technology equipment for decades. Special emphasis is placed on permanently refining of the spray pattern. This in turn is seen as a crucial prerequisite for high quality and efficient treatment.

# SÜDA PEDOSPRAY 2.0

The new wet technology series



✓ individual equipment

✓ professional work made easy

✓ modern design

## FEATURES

- Choice of 6 powerful hand pieces
- Control unit with state-of-the-art electronics
- Speed range from 5,000 to 40,000 rpm
- Left/right rotation
- Light (optional) for illuminating the treatment area optimally.
- Membrane keypad with digital LCD display (incl. maintenance instructions)
- Spray function can be switched on and off separately
- Individual spray adjustment by means of needle valve
- 250 ml water container
- Integrated hand piece holder

**optional:** foot pedal for speed control

# NEW Pedospray PD 30

Quiet, brushless and powerful micromotor, high torque even at low speeds (max. 30,000 rpm), lower maintenance than DC motors as they have no carbon brushes subject to wear.

## FEATURES

- Control unit with state-of-the-art electronics
- Compact design
- Automatic clamping system
- Clean Head System
- Single spray
- Integrated spray
- Unique NSK nozzle generates optimal fine spray
- 1:1 transmission  
maximum speed 30,000 rpm
- Quiet, brushless micromotor
- For cutter (Ø 2.35)



## SCOPE OF DELIVERY

- Foot care unit Pedospray PD 30 incl. hand piece PD 30, mains cable

1507.01 Pedospray PD 30

## ACCESSORIES

8930.3	Work unit (AE)
1507.4	Foot switch - steps wired
1507.5	Foot switch - accelerator pedal wired
8336	Hand piece holder
9320.600	CARE MORE NT Special, 100 ml
8334.001	Podo-Liquid, 5l canister
8334.008	Aqua Distillata, 5l canister

## TECHNICAL DATA

**Control unit:** Electrical connection: 230 V/ 50 Hz | Power: 140 W | Dimensions: W 264 x D 245 x H 166 mm | Weight: 3.4 kg  
**Micromotor hand piece:** Speed: 30,000 rpm | Dimensions: Ø 22 x L 104 mm | Weight: 89 g

# NEW Pedospray Pododent 1

The tried-and-tested classic spray hand piece used daily by thousands of podiatrists worldwide. Max. 40,000 rpm

## FEATURES

- Compact design
- Control unit with state-of-the-art electronics
- Digital LCD display (incl. maintenance instructions)
- Automatic clamping system
- Clean Head System
- Single spray
- Unique NSK nozzle generates optimal fine spray
- 1:1 transmission  
maximum speed 40,000 rpm
- Quiet, powerful micromotor
- For cutter (Ø 2.35)g



## SCOPE OF DELIVERY

- Foot care unit Pedospray Pododent 1 incl. hand piece Pododent 1 with light function, mains cable

1507.02 Pedospray Pododent 1

## ACCESSORIES

8930.3	Work unit (AE)
1507.4	Foot switch - steps wired
1507.5	Foot switch - accelerator pedal wired
8336	Hand piece holder
9320.600	CARE MORE NT Special, 100 ml
8334.001	Podo-Liquid, 5l canister
8334.008	Aqua Distillata, 5l canister

## TECHNICAL DATA

**Control unit:** Electrical connection: 230 V/ 50 Hz | Power: 140 W | Dimensions: W 264 x D 245 x H 166 mm | Weight: 3.4 kg  
**Micromotor hand piece:** Speed: Max. 40,000 rpm | Dimensions: Ø 22 x L 104 mm | Weight: 105 g



# NEW Pedospray PDL 40

Hand piece with a circular ring of 10 x LEDs that illuminates the treatment area with light similar to daylight. In addition, the hand piece features a quiet, powerful, brushless micromotor. Max. 40,000 rpm

## FEATURES

- Compact design
- Control unit with state-of-the-art electronics
- Light for illuminating the treatment area optimally.
- Digital LCD display (incl. maintenance instructions)
- Automatic clamping system
- Clean Head System
- Single spray
- Integrated spray
- Unique NSK nozzle generates optimal fine spray
- LED lighting all around with 10 LEDs
- 1:1 transmission  
maximum speed 40,000 rpm
- Quiet, powerful, brushless micromotor
- For cutter (Ø 2.35)

## SCOPE OF DELIVERY

- Foot care unit Pedospray PDL 40 incl. hand piece PDL 40, mains cable

1507.03      Pedospray PDL 40



## ACCESSORIES

8930.3	Work unit (AE)
1507.4	Foot switch - steps wired
1507.5	Foot switch - accelerator pedal wired
8336	Hand piece holder
9320.600	CARE MORE NT Special, 100 ml
8334.001	Podo-Liquid, 5l canister
8334.008	Aqua Distillata, 5l canister

## TECHNICAL DATA

**Control unit:** Electrical connection: 230 V/ 50 Hz | Power: 140 W | Dimensions: W 264 x D 245 x H 166 mm | Weight: 3.4 kg  
**Micromotor hand piece:** Speed: 30,000 rpm | Dimensions: Ø 22 x L 104 mm | Weight: 98 g

# NEW Pedospray PX 65

Utilises non-allergenic, bio-compatible properties of titanium to further enhance the durability and hard-wearing nature of the hand pieces. DURACOAT creates a smooth, scratch-resistant surface that is pleasant to the touch. Max. 40,000 rpm

## FEATURES

- Compact design
- Control unit with state-of-the-art electronics
- Digital LCD display (incl. maintenance instructions)
- DURACOAT
- Extremely durable and lightweight titanium case\*
- Glass fibre optics\*\*
- Autoclavable
- Clean Head System
- Single spray
- 1:1 Transmission
- LED light\*\*
- maximum speed 40,000 rpm

## SCOPE OF DELIVERY

- Foot care unit Pedospray PX 65 incl. hand piece PX 65 with light function, mains cable

## ACCESSORIES

8930.3	Work unit (AE)
1507.4	Foot switch - steps wired
1507.5	Foot switch - accelerator pedal wired
8336	Hand piece holder
9320.600	CARE MORE NT Special, 100 ml
8334.001	Podo-Liquid, 5l canister
8334.008	Aqua Distillata, 5l canister

## TECHNICAL DATA

**Control unit:** Electrical connection: 230 V/ 50 Hz | Power: 140 W | Dimensions: W 264 x D 245 x H 166 mm | Weight: 3.4 kg  
**Micromotor hand piece:** Speed: Max. 40,000 rpm | Dimensions: Ø 20 x L 94 mm | Weight: 65 g



## Clean Head System

The patented Clean Head System is a specially designed system that automatically prevents liquids and other contaminants from entering the hand piece. This significantly extends the life of the bearings in the hand pieces.

## Single spray

Single spray provides efficient cooling of the cutter as well as on the surface of the skin.

## Autoclavable

All NSK PX65 and PX65L hand pieces offer superior durability and longevity even after repeated autoclaving up to 135°C.

1507.04 Pedospray PX 65

# NEW Pedospray PX 65

Utilises non-allergenic, bio-compatible properties of titanium to further enhance the durability and hard-wearing nature of the hand pieces. DURACOAT creates a smooth, scratch-resistant surface that is pleasant to the touch. Max. 40,000 rpm Plus integrated light in the hand piece.

## FEATURES

- Compact design
- Control unit with state-of-the-art electronics
- Light for illuminating the treatment area optimally.
- Digital LCD display (incl. maintenance instructions)
- DURACOAT
- Extremely durable and lightweight titanium case\*
- Glass fibre optics\*\*
- Autoclavable
- Clean Head System
- Single spray
- 1:1 Transmission
- LED light
- maximum speed 40,000 rpm

## ACCESSORIES

8930.3	Work unit (AE)
1507.4	Foot switch - steps wired
1507.5	Foot switch - accelerator pedal wired
8336	Hand piece holder
9320.600	CARE MORE NT Special, 100 ml
8334.001	Podo-Liquid, 5l canister
8334.008	Aqua Distillata, 5l canister



## Cellular glass optics

By fusing multiple glass fibres into a unique light guide, Cellular Glass Optics delivers 20% more brilliant illumination of the work-space. The light guide is sterilisable and does not deteriorate even after repeated sterilisation, it retains its brilliant light guidance for a long time.

## SCOPE OF DELIVERY

- Foot care unit Pedospray PX 65 L incl. hand piece PX 65 L, mains cable

1507.05	Pedospray PX 65 L
---------	-------------------

## TECHNICAL DATA

**Control unit:** Electrical connection: 230 V/ 50 Hz | Power: 140 W | Dimensions: W 264 x D 245 x H 166 mm | Weight: 3.4 kg  
**Micromotor hand piece:** Speed: 30,000 rpm | Dimensions: Ø 20 x L 94 mm | Weight: 68 g

# NEW Pedospray NLX nano

Features advanced coreless DC motor technology that offers smooth, quiet operation, powerful torque and minimal heat generation despite its compact size. Max. 40,000 rpm

## FEATURES

- Compact design
- Control unit with state-of-the-art electronics
- Light for illuminating the treatment area optimally.
- Digital LCD display (incl. maintenance instructions)
- Perfectly balanced and very compact motor
- Very powerful with up to 3.4 Ncm torque
- LED light with up to 32,000 LUX and similar to day-light to improve vision
- Extremely durable and lightweight titanium case and scratch-resistant DURACOAT coating
- Autoclavable micromotor

## ACCESSORIES

8930.3	Work unit (AE)
1507.4	Foot switch - steps wired
1507.5	Foot switch - accelerator pedal wired
8336	Hand piece holder
9320.600	CARE MORE NT Special, 100 ml
8334.001	Podo-Liquid, 5l canister
8334.008	Aqua Distillata, 5l canister

## SCOPE OF DELIVERY

- Foot care unit Pedospray NLX nano incl. hand piece NLX nano with light function, mains cable

## TECHNICAL DATA

**Control unit:** Electrical connection: 230 V/ 50 Hz | Power: 140 W | Dimensions: W 264 x D 245 x H 166 mm | Weight: 3.4 kg  
**Micromotor hand piece:** Speed: Max. 40,000 rpm | Dimensions: Ø 20 x L 70 mm | Weight: 61 g



## Perfect balance

The balance between motor and instrument combined has been fundamentally improved as the weight and size of the micromotors has been drastically reduced.

## High torque, smooth rotation and minimal vibration

Thanks to NWT's electronic control, the micromotors deliver continuous and stepless performance over the entire speed range. This ensures minimal running noise and vibration, and offers the highest level of comfort for patients and chiropodists.

1507.06	Pedospray NLX nano
---------	--------------------



# Nail M110

Nail grinder for flexible use in professional nail design

The Nail M110 stands out thanks to its technical innovations and modern design. The device can be attached directly to the body via a waist belt and can also be used without a cable thanks to rechargeable batteries. For professional natural and artificial, permanent-use nail treatment. Without vacuum suction.



## SCOPE OF DELIVERY

- Nail grinder M110
- Micromotor hand piece
- Foot switch
- Device and hand piece tray
- Waist belt
- Battery charger

1436      Nail M110

## TECHNICAL DATA

**Control unit:** Electrical connection: 100-240 V / 50-60 Hz (input), 13 V (output) | Battery charging time: 2.5 hrs  
Operating time: 5 h (at maximum rotation), 9 h (at medium rotation) | Dimensions: W 6.7 x D 3 x H 13.2 cm  
Weight: 185 g

**Micromotor hand piece:** Speed: Max. 25,000 rpm | Right/left rotation | Dimensions: Ø 24 x L 136 mm | Weight: 120 g

# Suction technology accessories



## DUST BAG FOR PEDO SPRINT / SÜDA VAC S

8415.2 1 pack of 5 pieces

Micropore dust bag suitable for the PEDO Sprint Eco/50/100 and SÜDA Vac S. The 5-layer special fabric with ultrasonically welded seams guarantees optimum filter properties.



## DUST BAG FOR AIR AS1/PEDO FS3

8412.1 1 pack of 5 pieces

Micropore dust bag suitable for AIR AS1/PEDO FS3 foot care units. The 5-layer special fabric with ultrasonically welded seams ensures optimum filter properties.



## DUST BAG FOR MEDIVAC

1995.001 1 pack of 5 pieces

Textured, multi-layer depth filter according to IFA. Microfine filter with highest dust separation quality (in D) according to dust class M. Lowest loss of suction power. Antibacterial effect.



## DUST BAG FOR SÜDA REFINE

3340.002 1 piece

Fine dust filter fleece suitable for the SÜDA Refine (3340)



## SLIDE-IN FILTER (MOTOR PROTECTION FILTER)

36077 1 piece

Suitable for SÜDA Vac S

35600 1 piece

Suitable for all drying technology units except SÜDA Vac S

# Wet Technology hand pieces

Attachment and turbine hand pieces for Spray Vac Unit, podoAIRspeed, SÜDATRONIC and SÜDA spray



## ATTACHMENT HAND PIECES (WITHOUT MICROMOTOR)

1258.10	Hand piece Micro NX 110D
1530.61	Hand piece NSK PX65

## ATTACHMENT HAND PIECES WITH LIGHT FUNCTION (WITHOUT MICROMOTOR)

1530.81	Hand piece NSK PX65L
---------	----------------------



## TURBINE HAND PIECES

1258.1	Turbine hand piece Triple Spray / SÜDA TT-WS M4
1396.1	Turbine hand piece NSK Pana Max



## OMNICUT

1503.8	Omnicut attachment
1503.800	Omnicut blades, 20 pieces (10 set)

The rotating mini blades remove even stubborn, thickened calluses in seconds. No milling dust is produced in the process! The blades are replaceable and can be sterilised. 2 blades (= 1 set) included in scope of delivery. Suitable for micromotors NBX, NBX LED, NLX nano and SÜDA MM-WS/WS L



## SÜDA TRANSMISSION HAND PIECE

1398	Transmission hand piece
------	-------------------------

Easy-to-handle and lightweight hand piece with up to 200,000 rpm. Precise, fast and accurate working. Pleasant, painless treatment. Suitable for micromotors NBX, NBX LED, NLX nano and SÜDA MM-WS/WS L

# Wet technology accessories



## AQUA DISTILLATA,

8334.008 Canister, 5 l

Distilled water to ensure trouble-free working with wet-chemical equipment, chemically pure, deionised, also suitable for use in autoclaves/Euroclaves - standard EN 285, DIN 43530 and DIN 13060 / canister 5 litres



## PODO-LIQUID

8334.001 Canister, 5 l

Special solution containing alcohol, which is used in place of distilled water in wet technology equipment. Breaks the surface tension of the water and thus enables more effective nebulisation at the tip of the hand piece.



## CARE MORE NT SPECIAL

9320.600 100 ml

Alcohol-free, odourless, germicidal concentrate to improve nebulisation, by breaking the surface tension, and to prolong the shelf life of distilled water. Mix the contents of the bottle with 5 litres of distilled water.



## WL-CLEAN / WL-DRY

1389.10 Combination pack 500 ml / 300 ml

Universal, ready-to-use, aldehyde and alcohol-free rinsing and cleaning solution for non-protein-fixing internal cleaning and decontamination prior to disinfection/sterilisation of hollow-body instruments, such as turbines, hand and angle pieces. With drying spray for quickly drying the rinsed instruments to speed up cleaning. New with environmentally friendly propellant.



## WL-ADAPTER

1389.101 WL adapter 02 stainless steel

Adapter for spray water and spray air ducts of all hand and angle pieces with ISO interface

# Wet technology accessories



## STERIA SPRAY

1389.9	500 ml jar
1389.2	Nozzle
1389.6	Nozzle for turbines

Your high-performance hand pieces need to be cared for regularly. Rinse with STERIA spray once a day for normal use and several times a day for heavy use - as a result the hand pieces will have a long service life. Order nozzle separately if required.



## W&H SERVICE OIL F1

1390	400 ml can
------	------------

For turbine hand piece, spray hand piece and air motor care. To ensure a longer service life of the hand pieces. Sterilisation-resistant and highly economical.



## BIOTEST WATER QUALITY

9320.810	Biotest, 10 tests/pack
----------	------------------------

With the Biotest, you can supplement your hygiene management with a simple and useful option for measuring your water quality.



## BILPRON

9320.800	Bilpron, 1 l
----------	--------------

With Bilpron you get the ideal hygienic agent for cleaning all water paths. Safely and reliably removes both organic and inorganic residues. Effective against a broad spectrum of germs. Prevents new biofilm from forming. Remains in the unit for at least 12 hours.



## CLEANING SPRAYER WET TECHNOLOGY

1259.001	Cleaning syringe for SÜDA spray
----------	---------------------------------

The spray system of the unit can be easily rinsed and cleaned using this cleaning syringe.



# Accessories



## HAND PIECE HOLDER

8336

Additional hand piece tray made of robust soft plastic. Absolutely non-slip and washable - for working safely on all work surfaces.

Dimensions: W 130 x D 30 x H 48 mm



## UNIVERSAL HAND PIECE HOLDER

8920.102

Additional hand piece tray made of robust soft plastic. Absolutely non-slip and washable - for working safely on all work surfaces. With slots to accommodate six rotating instruments. Dimensions: W 150 x D 12 x H 60 mm



## FOOT SWITCH

8211.024      Foot switch, wired

Suitable for Pedo Sprint Eco/50/100, SÜDA Vac S, asteria 1000, Pedospray nt 40 / NT 40 light, SÜDATRONIC and SÜDA spray.

# Trolley system SÜDA mobility

---

# Mobile Foot Care

## Superior design and quality

SÜDA makes mobile treatment comfortable You will find our treatment cases for even the most demanding customer in mobile foot care on the following pages. Functional. Robust. Light. Flexibly tailored to every need. Perfectly designed quality from SÜDA. Browse through the following pages and let us also advise you.

# Trolley system



SÜDA, as your long-standing partner in mobile foot care, once again shows its innovative strength and practically reinvents the foot care case for your practice on wheels. During development we focussed on the following points:

## Perfect mobility

The innovative trolley system not only makes it easier for you to transport the trolley on flat surfaces, but is also easy to use on inclines. Depending on your requirements, you can choose between the ball bearing trolley and the stair climber trolley.

## Functionality is key

The two-part, intelligent case system was designed directly for transport with the trolley system, but functions just as well individually. The case system is divided into two separate units, both of which can be fixed to the trolley. On straightforward home visits you can transport only the working unit into the client's home. However, if there are several clients in the same location, for example in a nursing home, it may be nec-

essary to have the supply unit with you as well. In this combination, the work unit is placed above the supply unit on the trolley, providing the ideal working height for the foot care unit and allowing you to practise directly from the trolley.

## Sophisticated optics

The increased focus on the topic of "hygiene" makes sure that the case system is easy to clean and virtually germ-free. Material and colouring have been ideally adapted to the requirements of mobile foot care. Let yourself be inspired by this well thought-out, innovative case concept and convince yourself of SÜDA's renewed pioneering work in the field of mobile foot care.

# SÜDA mobility

MADE IN  
GER

Discover the limitless possibilities of our trolley system and explore the new dimension of mobile foot care.



SÜDA mobility trolley  
system

Whether you use the work unit in combination with the trolley or just operate with the work unit - you can easily find space for a foot care unit, magnifying lamp and tray so that you have everything you need to treat your clients where they are located.

Both the resistant outer material and the entire interior can be cleaned until it is almost germ-free. Don't give dirt and moisture a chance and use a suitable cleaning solution from SÜDA.

The robust wheels of the stair climber trolley can also be retrofitted with ball bearings. This really equips you for any surface. Converting the wheels is quick and easy via a click mechanism.

Especially when there are many clients in the same location, additional storage space is extremely important. The supply unit allows you to pack larger quantities of consumables or sales products directly into the unit.



TROLLEY SYSTEM

MOBILE FOOT CARE



# The SÜDA mobility set



## SÜDA MOBILITY WORK UNIT

8930.3 Work unit (AE)

Dimensions: W 35 × H 25 × D 35 cm / Weight: WU (empty) 4.0 kg Features: Removable, separately usable WU. Placed on the trolley/SU, the WU reaches the ideal working height without having to remove the foot care unit from the WU. Storage space for all current SÜDA devices. Carrying strap available (included in the price). Holder for magnifying lamp and tray. Storage compartments (e.g. for foot switch). Foldable outer pockets for extra storage space



## SÜDA MOBILITY CARRYING AID

8930.5 Carrying aid

Dimensions: Ø 15 cm, L 65 cm Features: Transport device with shoulder strap for footrest and/or work stool when WU is used separately



## SÜDA MOBILITY SUPPLY UNIT

8930.4 Supply unit (SU)

Dimensions: W 35 × H 48 × D 35 cm / Weight: SU (empty) 5.8kg Features: Removable, separately usable SU. Bag for instrument boxes. Additional storage space (e.g. for sales materials). Carrying strap available (included in the price). Footrest and/or work stool can be fixed to the side of the SU. Contains one drawer unit of 3 drawers. Optional: A second drawer unit (8930.7) can be ordered as required or, instead of a second drawer unit, a cooling bag (8930.6) can be ordered as needed.



## SÜDA MOBILITY COOLER BAG

8930.6 Cooler bag

Dimensions: W 19 × H 24 × cm D 27 cm Features: Cooler bag for cooling consumables. Can be integrated into SU.



## SÜDA MOBILITY DRAWER BOX

8930.7 Drawer box

Dimensions: W 19 × H 24 × D 27 cm Features: Drawer unit for practically storing working materials. Can be integrated into SU.



## SÜDA MOBILITY TROLLEYS

8930.1 Stair climber trolley

Dimensions: H 108 cm / Weight: 2.7 kg / Load capacity: max. 50 kg  
Ideal for climbing stairs.  
Perfect especially for urban settings and smooth surfaces.  
Space-saving, easy to fold.

8930.2 Trolley ball bearings

Dimensions: H 108 cm / Weight: 2.5 kg / Load capacity: max. 50 kg  
Robust trolley with sturdy wheels.  
Perfect especially for rural settings and rough surfaces.  
Space-saving, easy to fold.



## SÜDA MOBILITY TROLLEY WHEELS

Separate wheels to replace or add to your trolley. Easy to attach or replace.

8930.8 Stair climber wheel, 1 piece

8930.9 Ball bearing wheel, 1 piece



## SÜDA MOBILITY SETS

8930.100 Complete stair climber set

Consisting of work unit, supply unit and stair climber trolley

8930.200 Complete ball bearings set

Consisting of work unit, supply unit and trolley ball bearings

## ACCESSORIES

8919 Flexilight case light  
*No adapter necessary*

8206.36 Case magnifier lamp  
varioLEDflex  
*Adapter necessary (8206.361)*

8206.39 Omega case light  
*Adapter necessary (8206.391)*

8206.361 Adapter for varioLEDflex

8206.38 Mobile LED case magnifier lamp  
*Adapter required (8206.381)*

8206.381 Adapter for Mobile LED

8204.3 PROFI work stool

1104.1 MINI legrest

7251 Instrument box, stainless steel  
(W 205 x D 40 x H 100 mm)

8311.11 Hygiene box, 180 ml

8311.16 Hygiene box, 280 ml

8311.15 Hygiene box, 700 ml

4862 Melamine tray small  
(W 190 x D 15 x H 150 mm)

4863 Melamine tray large  
(W 235 x D 15 x H 180 mm)

2172 Collecting box for blades

---

56

SÜDA AF1

---

59

SÜDA Move  
series

---

65

SÜDA Pioneer

---

69

Podo Xdream  
series

---

# Treatment Chairs

## We offer solutions

The design of our German-made treatment chairs is based on the typical professional requirements that foot care and podiatry have to deal with on a daily basis. With our treatment chairs every client will find their desired product. And we ensure smooth workflows at all times. We take our clients' everyday needs and cares to heart.

# Treatment Chairs - Overview



SÜDA AF1  
> P. 56



SÜDA Move C1  
> P. 60



**NEW**  
SÜDA Move C2  
> P. 62

<b>CATEGORY</b>	semi-automatic Footrests manual	fully automatic Footrests manual	fully automatic Footrests electric
<b>MASSAGE SUITABLE</b>	yes	yes	yes
<b>DRIVE</b>	1 electric motor	3 electric motors	5 electric motors
<b>OPERATION</b>	Foot switch	Radio foot switch	Radio foot switch
<b>LENGTH</b>	166 - 190 cm	205 cm	205 cm
<b>WIDTH</b>	56 cm without armrest 76 cm with armrest	60 cm without armrest 83 cm with armrest	60 cm without armrest 83 cm with armrest
<b>SEAT CUSHION LENGTH</b>	51 cm	48.5 cm	48.5 cm
<b>WEIGHT</b>	60 kg	120 kg	120 kg
<b>MAX. SEAT HEIGHT</b>	85 cm	93 cm	93 cm
<b>BACK ADJUSTMENT</b>	80°	75°	75°
<b>SEAT ANGLE ADJUSTMENT</b>	27°	-5° - 25°	-5° - 25°
<b>FOOTREST ADJUSTMENT</b>	90°	90°	90°
<b>HEIGHT ADJUSTMENT</b>	34 cm	38 cm	36 cm
<b>ROTATION ANGLE</b>	not rotatable	340°	340°
<b>LEG RESTS</b>	split, extendible, height adjustable	split, extendible, height adjustable, 90° can be swivelled away to the side	electrically adjustable, split, extendible, height-adjustable, can be swivelled 90° to the side
<b>MAX. WORKING HEIGHT</b>	125 cm	140 cm	140 cm
<b>MAX. SEAT LOAD</b>	150 kg	200 kg	200 kg
<b>ENTRY HEIGHT</b>	51 cm	57 cm	57 cm
<b>HEAD SECTION</b>	extendible	extendible	extendible
<b>UPHOLSTERY COLOUR</b>	○ ● ● ● ● ●	○ ● ●	○ ● ●







**NEW**  
Pioneer 2.0  
> P. 66



Podo Xdream 2M  
> P. 70



Podo Xdream 3M  
> P. 74



**NEW**  
Podo Xdream 2.0  
> P. 76

fully automatic Footrests electric	fully automatic Footrests manual	fully automatic Footrests manual	fully automatic Footrests manual
yes	no	yes	yes
5 electric motors	2 electric motors	3 electric motors	3 electric motors
Foot switch	Foot switch	Foot switch	Foot switch
205 cm	174 - 198 cm	174 - 198 cm	205 cm
60 cm without armrest 83 cm with armrest	56 cm without armrest 78 cm with armrest	56 cm without armrest 78 cm with armrest	60 cm without armrest 83 cm with armrest
48,5 cm	47 cm	47 cm	48,5 cm
130 kg	85 kg	85 kg	125 kg
93 cm	87 cm	87 cm	93 cm
75°	27°	80°	75°
-5° - 25°	27°	27°	-5° - 25°
90°	90°	90°	90°
40 cm	30 cm	30 cm	40 cm
200°	not rotatable	not rotatable	not rotatable
electrically adjustable, split, split, extendible, height-adjustable, can be swivelled 90° to the side	extendible,	split, extendible, height adjustable	split, extendible, height adjustable, 90° can be swivelled away to the side
140 cm	125 cm	125 cm	140 cm
200 kg	170 kg	170 kg	200 kg
53 cm	57 cm	57 cm	53 cm
extendible	extendible	extendible	extendible
○ ● ●	○ ● ● ● ● ● ●	○ ● ● ● ● ● ●	○ ● ●

# SÜDA AF1



The inexpensive entry-level model is characterised by its versatility, functionality and its space-saving compactness. Thanks to its horizontally adjustable backrest, the AF1 is also excellent to use for massage treatments in addition to foot care treatments. The adjustable head section ensures the client is comfortable in a perfect lying position. For massages, it is inserted upside down to form a comfortable nose slit.

There are 4 stable and swivelling castors on the base of the chair. So moving or repositioning the AF1 is child's play. The castors can then be conveniently fixed in place.

The 10 cm thick, breathable smooth upholstery with foam core is particularly hard-wearing and has a lightly grained surface. The upholstery is waterproof with wetness stop function and resistant to disinfectants and cleaning agents.

8503	Foot care chair AF1, white
8503XXX	Foot care chair AF1 in standard upholstery colour*

\* Insert colour numbers (XXX) for upholstery colour accordingly: U01 (concrete), U13 (terre), U21 (prune), U14 (tomato), U23 (absinthe). White corresponds to the standard and does not require any additional colour number indication.

ACCESSORIES

8301.84	Terrycloth cover AF1
8503.001	Footrest protector AF1

Available in 6 upholstery colours



TECHNICAL DATA

Electrical connection: 230 V / 50-60 Hz | Power: 105 VA | Length: 166-190 cm | Width with armrests: 76 cm | Seat height: 51-85 cm | Weight: 60 kg | Max. seat load: 150 kg

Lowerable seat height to only 51 cm

Swivelling armrests for comfortable and easy seat access

Electrical adjustment of the seat height by foot switch

Two-part leg rest can be individually adjusted incl. angle of inclination

Pull-out and removable headrest and footrests





# SÜDA Move

SÜDA Move provides maximum comfort and treatment ergonomics in the smallest possible space. The SÜDA Move models are characterised by their high stability and flexibility and allow your clients to find the right position for every treatment, including massages.

With its modern and technically high-quality lifting column and particularly hard-wearing upholstered surface, SÜDA Move is ideally suited for heavy continuous use with a high treatment volume.



# SÜDA Move C1

The SÜDA Move C1 is the first of a new generation of foot care chairs - maximum comfort and treatment ergonomics in the smallest possible space.

## NOTE

ALSO AVAILABLE AS A MEDICAL PRODUCT

## ACCESSORIES

8301.131	Terrycloth cover SÜDA Move C1, 8-piece
8299.11	Arm protectors SÜDA Move C1
8562.100	Footrest protector SÜDA Move C1

Available in 3 upholstery colours



Other special colours are available for an additional charge.

## FEATURES

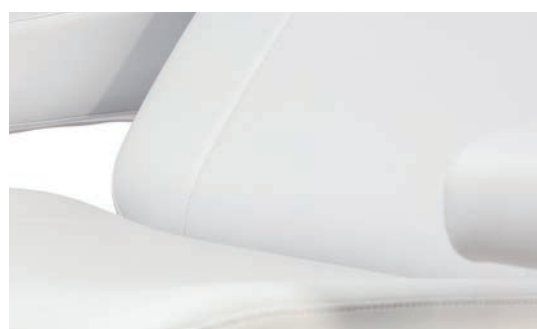
- Modern and technically sophisticated lifting column - vertical height adjustment without offset and thus suitable for small rooms
- Very low access height and negative seat angle for very comfortable entry and exit
- Side access possible thanks to fold-away armrests
- Armrests removable, vertically lockable and 180° foldable
- Rotates 340° with electronic parking brake
- Easy to clean and disinfect upholstery
- Complete cladding of the mechanics
- Leg sections can be swivelled sideways by 90°
- Extendible heel part
- Calf pads adjustable
- Head section continuously extendible by 14 cm
- Radio foot switch (also used to control the electronic parking brake of the swivel joint)
- Massage suitable





### Classic Contour upholstery

With its particularly hard-wearing, lightly grained surface, the SÜDA Move C1 in the Classic Contour upholstery version is ideal for heavy continuous use with a high treatment volume. The 10 cm thick cushion with foam core in ergonomic bucket seat design also offers perfect seating comfort, is bio-compatible, phthalate-free, flame-retardant and complies with Öko Tex Standard 100 Cl.1. The new back cushion also has a slight lumbar support.



### SCOPE OF DELIVERY

- Radio foot switch (also used to control the electronic parking brake of the swivel joint)

8562 SÜDA Move C1, white

### EQUIPMENT VARIANTS

8562XXX*	SÜDA Move C1, basic model, white Upholstery colour*
----------	--

\* Insert colour numbers (XXX) for upholstery colour accordingly: Classic Contour upholstery: P13 (stone), P37 (taupe)  
White corresponds to the standard and does not require any additional colour number specification.

### TECHNICAL DATA

Drive: 3 motors (height drive, seat angle drive, back drive) | Operation: Radio foot switch | Max. length: 192 cm |  
Width: 83 cm (including armrests - from outer edge to outer edge) | Seat width (cushion width): 60 cm | Seat cushion length:  
48.5 cm | Weight: 120 kg | Max. seat load: 200 kg | Seat height: 57 cm – 93 cm | Max. working height heel: approx. 140 cm |  
Seat angle adjustment: -5° to 25° | Footrest adjustment: 90° Rotation angle: 340° | Massage suitable: no | Back adjustment:  
0° - 75°

# NEW SÜDA Move C2

The SÜDA MOVE C2, like its sister model SÜDA Move C1, offers maximum comfort and treatment ergonomics in the smallest possible space thanks to elegant lifting column mechanism and 340° swivel with electric parking brake. In addition, all body segments including the leg sections are electronically adjustable. Preferred positions are easily stored and adjustable via a wireless foot switch. Thanks to its elegant decorative panel, the SÜDA Move C2 is a real eye-catcher.



8563 SÜDA Move C2, white

Available in 3 upholstery colours



Video  
SÜDA MOVE C2



Other special colours are  
available for an additional charge.

## FEATURES

- electromotive leg section adjustment for maximum comfort
- Treatment couches category: Fully automatic
- Application: Face, body, massage, wellness
- Massage suitability: Very good
- Drive: 5 electric motors
- Remote control: yes
- Length: 205 cm
- Width: 83 cm (with armrests)
- Weight: approx. 120 kg
- Entry height: 57 cm
- Maximum seat height: 93 cm
- Back adjustment: 75°
- Seat angle adjustment: -5° to +25°
- Footrest adjustment: 90°
- Height adjustment: 36 cm
- incl. selectable decorative panel



### electromotive leg sections

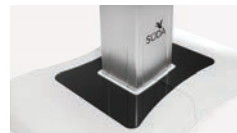
The comfortable electromotive leg sections for adjusting the position of the leg sections are also stored with the memory positions.

## SCOPE OF DELIVERY

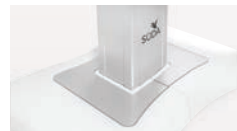
- Radio foot switch (also used to control the electronic parking brake of the swivel joint)

## ACCESSORIES

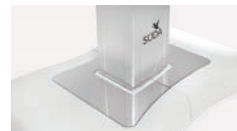
8301.131	Terrycloth cover SÜDA Move C2, 8-piece
8299.11	Arm protectors SÜDA Move C2
8.191.100	Leg section protectors (2-part) SÜDA Move C2



Acrylic glass  
(Item 8299.13)



Aluminium matt  
(Item 8299.14)



Chrome  
(Item 8299.15)

### Customisable decorative panels

The price includes one of the three decorative plates - choose your favourite and include the item number when ordering:

## EQUIPMENT VARIANTS

8563XXX*	SÜDA Move C2, basic model, white Upholstery colour* Decorative panel**
----------	--

\* Insert colour numbers (XXX) for upholstery colour accordingly: Classic Contour upholstery: P13 (stone), P37 (taupe)  
White corresponds to the standard and does not require any additional colour number specification.

## TECHNICAL DATA

Drive: 5 motors (height drive, seat angle drive, back drive) | Operation: Radio foot switch | Max. length: 205 cm | Width: 83 cm (including armrests - from outer edge to outer edge) | Seat width (cushion width): 60 cm | Seat cushion length: 48.5 cm | Weight: 120 kg | Max. seat load: 200 kg | Seat height: 57 cm - 93 cm | Max. working height heel: approx. 140 cm | Seat angle adjustment: -5° to 25° | Footrest adjustment: 90° Rotation angle: 340° | Massage suitable: Yes Back adjustment: 75°





# Pioneer

The design of our feature-packed Pioneer range is simple, clear, distinctive and - as the name suggests - deserves respect. On the one hand, the Pioneer serves a professional purpose, which ideally meets the needs and requirements of the clients. On the other hand, it is an item of everyday professional use and clearly distinguishable from the Podo Xdream range with regard to materials and design. During its development, the question we always asked ourselves was: "What can we do better than everyone else?" The Pioneer is the symbiosis of essentials delivering the exclusive essence of functionality.



# NEW Pioneer 2.0



8563 SÜDA Pioneer, white

Available in 3 upholstery colours



The new SÜDA Pioneer 2.0 is the latest model of the elegant parallelogram arm chair series. In addition to the new design and the even lower entry height, it also offers electrically adjustable leg sections. The treatment chair is rotatable, equipped with an electric parking brake and offers the highest level of relaxed seating comfort allowing you to make use of uniquely versatile treatment options.

## FEATURES

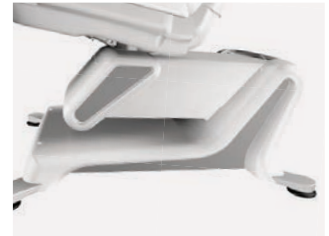
- Treatment couches category: Fully automatic
- Application: Face, body, massage, wellness
- Massage suitability: Very good
- Drive: 5 electric motors
- Remote control: yes
- Length: 205 cm
- Width: 60 cm (83 with armrests)
- Weight: approx. 130 kg
- Entry height: 53 cm
- Maximum seat height: 93 cm
- Back adjustment: 75°
- Seat angle adjustment: -5° to +25°
- Footrest adjustment: 90°
- Height adjustment: 40 cm
- Rotation angle: 200° |
- electromotive leg section adjustment for maximum comfort
- incl. selectable decorative panel

## SCOPE OF DELIVERY

- incl. foot switch

## ACCESSORIES

8301.131	Terrycloth cover SÜDA Pioneer 2.0, 8-part
8299.11	Arm protectors SÜDA Pioneer 2.0
8.191.100	Leg section protectors SÜDA Pioneer 2.0, (2-part)



## EQUIPMENT VARIANTS

8566XXX*	Pioneer 2.0, basic model, Classic Contour upholstery, white Upholstery colour*
----------	---

\* Insert colour numbers (XXX) for upholstery colour accordingly: Classic Contour upholstery: P13 (stone), P37 (taupe)  
White corresponds to the standard and does not require any additional colour number specification.

## TECHNICAL DATA

Electrical connection: 230 V / 50-60 Hz | Power: 105 VA | Length: 174- 198 cm | Head section: extendible by 12 cm |  
Foot section: Extendible by 12 cm | Width with armrests: 83 cm | Back: 57 cm (length) | Cushion width: 60 cm |  
Seat cushion length: 47 cm | Seat height: 53-93 cm | Back adjustment: 75° | Seat angle adjustment: -5° to 25° |  
Footrest adjustment: 90° Max. working height: 125 cm | Weight: 130 kg | Max. seat load: 170 kg



# Podo Xdream

The Podo Xdream is the professional treatment chair you will want to use often and with pleasure. It is so good that you sometimes forget it's even there. Because we have designed it to be long-lasting, safe and high quality and have made sure it meets our clients' high standards. The Podo Xdream lives up to its name: A dream to use for clients and patients. The epitome of flexible and variable functionality.

# Podo Xdream 2M

With an entry height of only 57 cm and a possible working height of up to 125 cm, the Podo Xdream 2M offers you and your clients maximum comfort. In addition, there is the electrically adjustable seat height and the synchronously adjustable seat and backrest. Split, extendible and height-adjustable leg rests deliver outstanding functionality.







Electrically adjustable seat height

Synchronously adjustable  
seat angle and back section

Armrests for side entry  
can be folded down

Headrest can be extended and  
removed

Split leg rests, extendible and height  
adjustable

Available in 6 upholstery colours



MADE IN  
GER



# Podo Xdream 2M

The Podo Xdream with its new, ergonomically shaped Classic Contour upholstery offers highest-level seating comfort thanks to its 10 cm thick, breathable upholstery with foam core in a bucket seat shape. The particularly hard-wearing, lightly grained surface can withstand even heavy continuous use. It is resistant to disinfectants and cleaning agents and it provides safe, high-level hygiene.



8533 Podo Xdream 2M

## ACCESSORIES

8301.119	Terrycloth cover Podo Xdream, 8-piece, white
8301.150	Soft velvet cover Podo Xdream, 8-piece, white
8301.1500	Soft velvet cover for armrests, 1 pair
8530.101	Footrest protector Podo Xdream, 2-piece
8299.63	TEP mouss Upholstery cleaner, 150 ml
8299.61	Microfibre cloth, 40 x 40 cm
8540.101	Plastic arm protectors

## TECHNICAL DATA

Electrical connection: 230 V / 50-60 Hz | Power: 105 VA | Length: 174-198 cm | Head section: extendible by 12 cm | Foot section: Extendible by 12 cm | Width with armrests: 78 cm | Back: 57 cm (length) | Cushion width: 55 cm | Seat cushion length: 47 cm | Seat height: 57-87 cm | Back adjustment: 27° | Seat angle adjustment: 27° | Footrest adjustment: 90° Max. working height: 125 cm | Weight: 85 kg | Max. seat load: 170 kg



Classic Contour  
Upholstery  
colours



(white)



U01 (concrete)



U13 (terre)



U21 (prune)



U14 (tomato)



U23 (absinthe)

## EQUIPMENT VARIANTS

8533XXX*	Podo Xdream 2M, Classic Contour upholstery, white Upholstery colour*
----------	---

\* Insert colour numbers (XXX) for upholstery colour accordingly:

Classic-Contour upholstery: U01 (concrete), U13 (terre), U21 (prune), U14 (tomato), U23 (absinthe)

White is standard and does not require any additional colour number indication.

# Podo Xdream 3M

3-motor version with electrically adjustable height, seat angle and separately adjustable backrest.



8534 Podo Xdream 3M

## ACCESSORIES

8301.119	Terrycloth cover Podo Xdream, 8-piece, white
8301.150	Soft velvet cover Podo Xdream, 8-piece, white
8301.1500	Soft velvet cover for armrests, 1 pair
8530.101	Footrest protector Podo Xdream, 2-piece
8299.63	TEP mouss Upholstery cleaner, 150 ml
8299.61	Microfibre cloth, 40 x 40 cm
8463.100	Massage head section, white
8463.100XXX*	Massage head section, coloured
8540.101	Plastic arm protectors

MADE IN  
GER

EQUIPMENT VARIANTS

8534XXX*	Podo Xdream 3M, Classic Contour upholstery, white Upholstery colour*
* Insert colour numbers (XXX) for upholstery colour accordingly: Classic-Contour upholstery: U01 (concrete), U13 (terre), U21 (prune), U14 (tomato), U23 (absinthe) White is standard and does not require any additional colour number indication.	



TECHNICAL DATA

Electrical connection: 230 V / 50-60 Hz | Power: 105 VA | Length: 174- 198cm | Head section: extendible by 12 cm |  
Foot section: Extendible by 12 cm| Width with armrests: 78 cm | Back: 57 cm (length) | Cushion width: 55 cm |  
Seat cushion length: 47 cm | Seat height: 57-87cm | Back adjustment: 80° | Seat angle adjustment: 27° |  
Footrest adjustment: 90° Max. working height: 125cm | Weight: 85 kg | Max. seat load: 170kg

# NEW Podo Xdream 2.0

The SÜDA Xdream 2.0 is the entry-level model in the new series of elegant parallelogram arm chairs with an even lower entry height. This foot care chair guarantees a high level of treatment comfort and enables ergonomic working.



Available in 3 upholstery colours



## ACCESSORIES

8301.131	Terrycloth cover Podo Xdream 2.0, 8-piece
8299.11	Arm protectors Podo Xdream 2.0
8.191.100	Leg section protectors Podo Xdream 2.0 (2-piece)

8565 Podo Xdream 2.0

MADE IN  
GER

## EQUIPMENT VARIANTS

8565XXX*	Pioneer 2.0, basic model, Classic Contour upholstery, white Upholstery colour*
----------	---

\* Insert colour numbers (XXX) for upholstery colour accordingly: Classic Contour upholstery: P13 (stone), P37 (taupe)  
White corresponds to the standard and does not require any additional colour number specification.

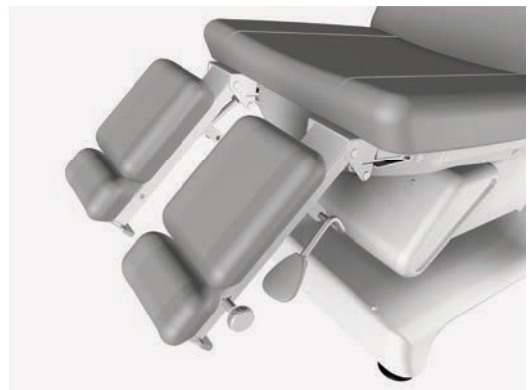
## FEATURES

- Treatment couches category: Fully automatic
- Application: Face, body, massage, wellness
- Massage suitability: Very good
- Drive: 3 electric motors
- Operation: Foot switch
- Length: 205 cm
- Width: 60 cm (83 with armrests)
- Weight: approx. 125 kg
- Entry height: 53 cm
- Maximum seat height: 93 cm
- Back adjustment: 75°
- Seat angle adjustment: -5° to +25°
- Footrest adjustment: 90°
- Height adjustment: 40 cm



## SCOPE OF DELIVERY

- incl. foot switch



## TECHNICAL DATA

Electrical connection: 230 V / 50-60 Hz | Power: 105 VA | Head section: Extendible | Foot section: Extendable | Width with armrests: 83 cm | Back: 57 cm (length) | Cushion width: 60 cm | Seat cushion length: 48.5 cm | Seat height: 53-93 cm | Back adjustment: 75° | Seat angle adjustment: -5° to 25° | Footrest adjustment: 90° Max. working height: 140 cm | Weight: 125 kg | Max. seat load: 200 kg



# Preparation and equipment trolleys

---

# Practice Equipment

The practice equipment completes your institute's furnishings and ensures high-level ergonomics and ample storage space at the workplace. All practice equipment products were developed to meet professional demands, are resilient and easy to clean.

# Preparation and equipment trolleys



Find the ideal addition to your foot care practice here. Whether your focus is on storing a device in a space-saving way or you need additional storage space – we offer you numerous options for designing your practice to meet your individual needs.



Cubus Foot Care 400  
> p. 84



Cubus Foot Care 600  
> p. 85



Cubus Foot Care 800  
> p. 86



Cabinet  
> p. 92



one4all  
> p. 94



Cabinet 400  
> p. 93



Cabinet 600  
> p. 93



Cabinet 800  
> p. 93

# Cubus

The Cubus series combines design and quality made in Germany for your podiatry or foot care practice.



Brackets for water bowl, Magnifier lamp, waste bin and other accessories

DIN-tested, certified mineral storage surface is extra-robust and easy to clean, offers no adhesion for germs and is resistant to chemicals

The hand pieces can be attached to the side so that the hoses do not obstruct access to the UV compartment and drawers

Controlled cable routing into the technical compartment

Equipment compartment for SÜDA foot care equipment with wet / dry technology

Cushioned, smooth-running castors, stable and can be flexibly positioned, lockable front castors

[Accessories > p. 90](#)

High demands are placed on hygiene in clinical, cosmetic and podiatry areas, For this reason, a material was developed for the shelves that does not provide any surface for bacteria, fungi or microorganisms to attack.



The integrated technical compartment of the Cubus series foot care accommodates the power cables of the units. All units can be switched off and on via a main switch on the rear wall of the Cubus.



#### All-over UV compartment

In order to ensure complete all-round irradiation of the instruments stored in the UV compartment and thus also the corresponding hygienic safety, our UV compartments are equipped with all-over UV compartments as standard.



#### Full-extension slide

The spacious drawers of the Cubus series have a full-extension slide as well as an automatic soft-closing function and are particularly easy to clean thanks to the use of a special plastic on the inside. Matching drawer inserts are available.



# Cubus Foot Care 400

The small all-rounder for your foot care treatment room.

MADE IN  
GER

Width 40 cm x  
height 90 cm x depth 51 cm



Accessories > p. 90

1184-13300	Cubus Foot Care 400, white, with UV compartment
1184-13301	Cubus Foot Care 400, light grey, with UV compartment

## FEATURES

- 40 cm wide, DIN-tested, certified mineral storage surface, developed for work areas with the highest hygiene requirements
- Holders for magnifier lamp, foot care hand piece and other accessories
- Equipment compartment with space for one wet or dry foot care unit
- Integrated technical compartment that holds and hides the power cables of the foot care units
- All units can be switched off and on via a main switch on the rear wall of the Cubus.
- One spacious drawer, incl. full-extension slide and automatic soft-closing function
- Integrated all-over UV compartment with uninterrupted all-round irradiation
- Cushioned smooth-running castors, front castors lockable
- Other colours and decors optionally available



# Cubus Foot Care 600

The compact model with enough storage space for all your equipment.



Width 60 cm x  
height 90 cm x depth 51 cm



Accessories > p. 90

1186-12300	Cubus Foot Care 600, white
1186-12301	Cubus Foot Care 600, light grey



## FEATURES

- 60 cm wide, DIN-tested, certified mineral storage surface, developed for work areas with the highest hygiene requirements
- Holders for magnifier lamp, foot care hand piece and other accessories
- Equipment compartment with space for one wet or dry foot care unit and further treatment accessories
- Integrated technical compartment that holds and hides the power cables of the foot care units
- All units can be switched off and on via a main switch on the rear wall of the Cubus.
- One spacious drawer, incl. full-extension slide and automatic soft-closing function
- Matching drawer inserts can also be ordered
- Cushioned smooth-running castors, front castors lockable
- Other colours and decors optionally available

# Cubus Foot Care 800

The all-rounder with integrated UV compartment and outstanding amount of storage space.



Width 80 cm x  
height 90 cm x depth 51 cm



Accessories > p. 90

1188-11230300	Cubus Foot Care 800, white, with UV compartment
1188-11230301	Cubus Foot Care 800, light grey, with UV compartment



## FEATURES

- 80 cm wide, DIN-tested, certified mineral storage surface, developed for work areas with the highest hygiene requirements
- Holders for magnifier lamp, foot care hand piece and other accessories
- Equipment compartment with space for two wet or dry foot care units
- Integrated technical compartment that holds and hides the power cables of the foot care units
- All units can be switched off and on via a main switch on the rear wall of the Cubus.
- Four spacious drawers, incl. full-extension slide and automatic soft-closing function
- Integrated all-over UV compartment with uninterrupted all-round irradiation
- Matching drawer inserts can also be ordered
- Cushioned smooth-running castors, front castors lockable
- Other colours and decors optionally available

# Your individual Cubus

We design your individual Cubus made in Germany together with you according to your preferences, matching the needs and colour themes of your institute.

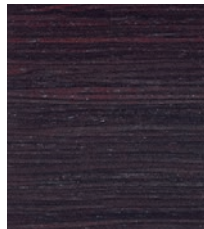
Choose freely from our numerous modification options:



**Non-binding expert advice**  
at +49 (0)721 9770388



Hickory



Wenge



**DECOR**  
Colour design  
according to your wishes  
Real wood veneers



**SHELF**  
highboard  
with safety glass  
Equipment compartment



**DRAWERS**  
With full-extension slide and  
aluminium handle strip



**OPTIONAL**  
All-over UV compartment

# Ordering scheme Cubus 400 / 600



## FEATURES

- 1 corpus
- 2 drawers 24 cm high
- 2 handle strips
- 1 wooden cover panel
- 4 castors

1184	Cubus 400 basic model (W 40 x H 90 x D 51 cm)
1186	Cubus 600 basic model (W 60 x H 90 x D 51 cm)

EQUIPMENT VARIANTS	LOWER LEVEL	MIDDLE LEVEL	UPPER LEVEL	TYPE OF DRAWER EXTENSION SLIDE	CORPUS COLOUR		
Drawer 1 x 24 cm high	1						
Drawer 2 x 12 cm high	2						
Drawer 1 x 24 cm high		1					
Drawer 2 x 12 cm high		2					
UV drawer 1 x 24 cm high		3					
without equipment compartment and highboard			0				
Drawer 1 x 24 cm high			1				
Drawer 2 x 12 cm high			2				
Device compartment and highboard			3				
Handle strip				0			
White					0		
Light grey					1		
Wenge decor					3		
Wenge real wood veneer					6		
Hickory real wood veneer					8		

\*Please add the numerical code resulting from the equipment variants to the item number. In this way you will receive the order number for the Cubus in your chosen configuration.

If your Cubus is to be fitted with a suitable holder for Waldmann magnifier lamps, please add a **W** to the order number. In case you change the lamp later, the holders can also be reordered separately.

# Ordering scheme Cubus 800

## FEATURES

- 1 corpus
- 4 drawers 24 cm high
- 4 handle strips
- 1 wooden cover panel
- 4 castors

1188 Cubus 800 basic model  
(W 80 x H 90 x D 51 cm)



EQUIPMENT VARIANTS	LOWER LEVEL		MIDDLE LEVEL		UPPER LEVEL**		TYPE OF DRAWER EXTENSION SLIDE	CORPUS COLOUR	
	left	right	left	right	left	right			
Drawer 1 x 24 cm high	1	1							
Drawer 2 x 12 cm high	2	2							
Drawer 1 x 24 cm high			1	1					
Drawer 2 x 12 cm high			2	2					
UV drawer 1 x 24 cm high			3	3					
without equipment compartment and highboard					0	0			
Drawer 1 x 24 cm high					1	1			
Drawer 2 x 12 cm high					2	2			
Device compartment and highboard					3	3			
Handle strip							0		
White								0	
Light grey								1	
Wenge decor								3	
Wenge real wood veneer								6	
Hickory real wood veneer								8	

\*Please add the numerical code resulting from the equipment variants to the item number. In this way you will receive the order number for the Cubus in your chosen configuration.

If your Cubus is to be fitted with a suitable holder for Waldmann magnifier lamps, please add a **W** to the order number. In case you change the lamp later, the holders can also be reordered separately.

\*\*In the upper level, the unit compartment and shelf can only be selected for the entire width. Unfortunately a combination consisting of device compartment on one side and drawers on the other side as well as different drawer heights is not possible.



# Cubus accessories

Would you like to attach a Waldmann magnifier lamp to your Cubus? In this case please add a **"W"** to the item number of the equipment trolley you have ordered. You will then receive the matching holder with a 16 mm receptacle.



## WASTE BIN SET

1182.20	Waste bin set plastic
1182.21	Waste bin set stainless steel

Consists of: Waste bin with tilting lid, retaining ring for waste bin, adapter sleeve for magnifier lamp holder standard



## WATER BOWL SET

1182.30	Water bowl set plastic
---------	------------------------

Consists of: Water bowl (2.5 litres), retaining ring for water bowl, adapter sleeve for magnifier lamp holder standard



## PREPARATION HOLDER SET

1182.40	Preparation holder set
---------	------------------------

Consists of: Preparation holder 3×Ø9 cm, retaining ring for water bowl, adapter sleeve for magnifier lamp holder standard



## UNIVERSAL TUBE HOLDER

1182.15	Universal tube holder for accessory sets
---------	--



#### CUTLERY TRAY

1182.631	Cutlery tray 29 x 6 x 36 cm
----------	-----------------------------

For Cubus 400/600/800. Insert with 6 compartments.  
Polypropylene (PP), grey colour.



#### DRAWER ORGANISATION SYSTEM

1182.632	Tray 8 x 8 x 5 cm
----------	-------------------

1182.633	Tray 15 x 8 x 5 cm
----------	--------------------

1182.634	Tray 23 x 8 x 5 cm
----------	--------------------

1182.635	Tray 30 x 8 x 5 cm
----------	--------------------

1182.636	Tray 38 x 8 x 5 cm
----------	--------------------

For Cubus 400/600/800. The individual trays can be freely combined and hooked into each other. Polypropylene (PP), grey colour.



#### HAND PIECE HOLDER FOR SUCTION HAND PIECES

1182.10	Hand piece holder M suitable for Pedo Sprint ECO/50/100, SÜDA Vac S, and Medivac
---------	--

1182.11	Hand piece holder D suitable for Pedo Sprint 100-D1
---------	--

1182.13	Hand piece holder F suitable for Pedo FS 3 and Air AS 1
---------	--



#### HAND PIECE HOLDER FOR SPRAY HAND PIECES

1182.12	Hand piece holder N universally suitable for all wet technology hand pieces
---------	--

#### UV COMPARTMENT

30132	UV tube 8 watt
-------	----------------

1182.65	UV compartment inner glass panel for Cubus 400/ 800
---------	---

1182.66	UV compartment inner glass panel for Cubus 600
---------	--



# Cabinet

## FEATURES

- Equipment and preparation trolley on easy-running, lockable castors for changing locations conveniently
- Basic partition with 3 deep storage areas
- Metal frame painted white
- Drawers optionally available
- Robust and easy-care surfaces
- Dimensions: W 66.3 x H 80 x D 41.4 cm

### NOTE

Delivered in disassembled form for self-assembly.



## ACCESSORIES

8406.6	Magnifier lamp holder receptacle 13 mm
8406.6W	Magnifying lamp holder Holder 16 mm for Waldmann lamps
8316.003	Holder for water bowl retainer ring

8322	Cabinet A, without drawer, white Dimensions: W 66.3 x H 80 x D 41.4 cm
------	--

8322.004	Cabinet B, with drawer, White Dimensions: W 66.3 x H 80 x D 41.4 cm
----------	---

8322.005	Cabinet C, with 2 drawers, white Dimensions: W 66.3 x H 80 x D 41.4 cm
----------	--

## compact - robust - good value

The compact SÜDA cabinet comes in three different widths (40 cm, 60 cm and 80 cm) and offers you the following features:

high-quality and robust corpus

white coated, easy to clean

durable, rounded  
ABS edge

covered magnifier holder

4 shelves with cable aperture on the  
rear wall

easy-running drawer slides with con-  
tinuous handle strip

sturdy castors with 2 locking  
brakes at the front

the cabinet is delivered fully assembled



### SCOPE OF DELIVERY

- **1. Basic version:** 2 open shelves, one drawer at the bottom, width: 39.4 cm
- **2. Medium version:** 2 open shelves, one drawer at the bottom, width 59.4 cm
- **3. Full version:** 2 open shelves, two side-by-side 38 cm wide drawers at the bottom, width 77 cm

1185-1	Cabinet trolley 400 External dimensions: H 78.0 x W 39.4 x D 40.0 cm
--------	--

1185-2	Cabinet trolley 600 External dimensions: H 78.0 x W 59.4 x D 40.0 cm
--------	--

1185-3	Cabinet trolley 800 External dimensions: H 78.0 x W 77.2 x D 40.0 cm
--------	--



# one4all

A simple yet comfortable cabinet for storing your treatment accessories.

This multi-talent is suitable for your foot care treatment room as well as for your cosmetic cabin. The small space-saving cabinet offers enough storage space for your treatment accessories with an equipment drawer and 3 drawers.

## FEATURES

- Dimensions: W 40 x H 76 x D 40 cm
- 3 drawers, 1 device compartment drawer
- 1 magnifier lamp holder in the cover panel
- large handle on both sides for pulling or as a towel holder
- interior 3-fold socket

8315.10 Equipment cabinet one4all

## ACCESSORIES

8315.11 side push handle for cabinet







# SÜDA Expert Instruments

---

# Instruments

## Small tool, big effect

As articles of daily use, the instruments are characterised by a wide range of shapes, material and surfaces. Depending on the client, the merits of each respective product are appreciated differently. SÜDA 's comprehensive range is virtually predestined to fulfil almost any wish a client may have, no matter how unusual. This is supported by the wide selection and care of our long-lasting assortment.

# SÜDA Expert Instruments

With the new SÜDA instrument series, you receive first-class, highly stable, quality products - ideal for use in professional foot care and podiatry. State-of-the-art manufacturing techniques are paired with fine craftsmanship and ensure perfect functionality and precision.

Instead of unnecessary design refinements such as flashy design coatings, the instruments with their matt, pleasant-to-the-touch surface finish provide maximum comfort and safety in your daily work. Each instrument is made of non-rust, high-quality German stainless steel. The protective passivation layer offers improved corrosion resistance for extra durability.

All instruments are manufactured in compliance with strict international quality guidelines and are certified as medical devices.



## Head cutter



### SÜDA EXPERT HEAD CUTTER STANDARD

2121.20    Length: 14 cm

Classic head cutter with curved cutting edge for cutting nails with high precision. For cutting on both sides. Cutting surface: 17 mm.



#### SÜDA EXPERT HEAD CUTTER SEMI-CUTTING EDGE

2121.22 Length: 14 cm

Head cutter with semi-cutting edge for working on one side of the nail. Also suitable for thick, hardened nails. Cutting surface: 15 mm.



#### SÜDA EXPERT HEAD CUTTER FLAME TIP

2121.21 Length: 14 cm

Double-sided head cutter with particularly sharp cutting edges. Also suitable for recessed nails and nail bed work. Cutting surface: 20 mm.

## Clippers



#### SÜDA EXPERT NAIL CLIPPERS CURVED

2121.24 Length: 13 cm

Classic nail clippers with curved cutting edge. Particularly easy to use thanks to their small, compact shape. Cutting surface: 16 mm.



#### SÜDA EXPERT NAIL CLIPPERS CURVED WITH BUFFER SPRING

2121.23 Length: 13 cm

Sturdy nail clippers with curved cutting edge and permanently elastic buffer spring for optimal cutting. Even very thick nails can be cut effortlessly. Cutting surface: 19 mm.



#### SÜDA EXPERT NAIL SPLITTER

2121.25 Length: 13 cm

Special clippers for working on ingrown nails or rolled nails. With two differently shaped cutting jaws for safe cutting. Cutting surface: 19 mm.



#### SÜDA EXPERT CORNER CLIPPERS STANDARD

2121.26 Length: 10 cm

2121.27 Length: 11.5 cm

2121.28 Length: 13 cm

Robust standard corner clippers with rounded cutting jaws. For working in corner areas



#### SÜDA EXPERT CORNER CLIPPERS NARROW

2121.29 Length: 10 cm

2121.30 Length: 11.5 cm

2121.31 Length: 13 cm

Slim corner clippers with long tip and relief ground cutting edge. For precise work such as removing small nail corners.



#### SÜDA EXPERT CORNER CLIPPERS POINTED

2121.32 Length: 10 cm

2121.33 Length: 11.5 cm

2121.34 Length: 13 cm

Sturdy corner clippers with tapered, pointed cutting jaws. For very precise work.



#### SÜDA EXPERT CORNER CLIPPERS FLAME TIP

2121.35 Length: 10 cm

2121.36 Length: 11.5 cm

2121.37 Length: 13 cm

Sturdy corner clippers with laterally tapered cutting jaws and an extremely narrow tip. Ideal for recessed nails.



#### SÜDA EXPERT CORNER CLIPPERS EXTRA FINE

2121.38 Length: 10 cm

2121.39 Length: 11.5 cm

2121.40 Length: 13 cm

Particularly slim corner clippers with long tip and highly relief ground cutting edge. For precise work such as removing the very smallest nail corners.



#### SÜDA EXPERT NAIL CLIPPERS CURVED

2121.42 Length: 10 cm

Cuticle clippers with bevelled cutting edge. For precisely removing cuticles and corns. Cutting surface: 7 mm.



#### SÜDA EXPERT SKIN CLIPPERS ERGONOMIC

2121.41 Length: 10 cm

Skin clippers with angled cutting head to take the strain off your wrist. Makes working easier and more ergonomic. Cutting surface: 7 mm.



#### SÜDA EXPERT CUTICLE CLIPPER

2121.43 Length: 10 cm

Fine cuticle clippers with scissor handle for optimal handling. Ideal for sensitive and hard-to-reach areas. For removing protruding cuticles and for corn treatment. Cutting surface: 5 mm.



#### SÜDA EXPERT BANDAGE CLIPPERS POINTED/BLUNT

2121.44 Length: 14 cm

Bandage scissors with one pointed and one blunt, rounded side. For cutting dressing material and bandages.

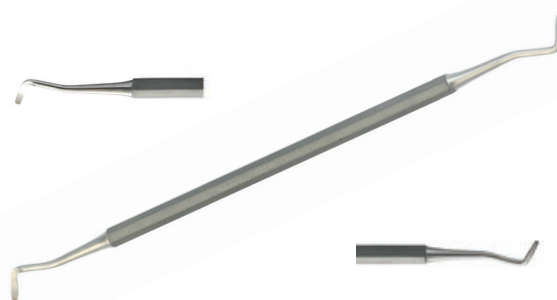


#### SÜDA EXPERT NOSE HAIR SCISSORS

2121.53

Scissors with rounded tip. For removing nose and ear hair precisely and safely.

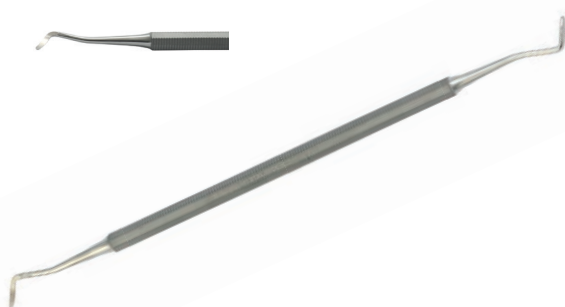
### Double instruments



#### SÜDA EXPERT DOUBLE PROBE

2121.45 Length: 17 cm

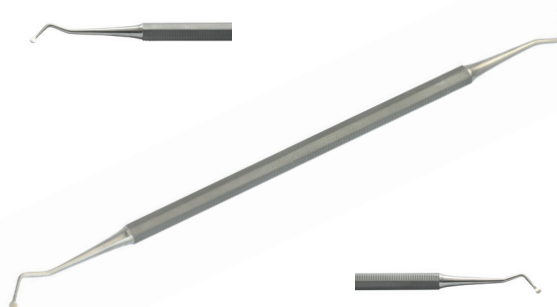
Classic double probe for gently working around the nail and in the nail bed.



#### SÜDA EXPERT DOUBLE PROBE EXTRA NARROW

2121.46 Length: 17 cm

Double probe with particularly slim spatulas. For gently working around the nail and in the nail bed.



#### SÜDA EXPERT DOUBLE PROBE WITH SPOON

2121.47 Length: 17 cm

Double probe with flat spoons on both sides. Versatile use for work in the nail bed.





#### SÜDA EXPERT NAIL CORNER FILE DOUBLE

2121.48 Length: 14 cm

Double-sided corner file with one straight and one curved surface. For filing remaining corners in the nail bed.



#### SÜDA EXPERT SPATULA BLUNT

2121.49 Length: 17 cm

Blunt spatula for scraping off calluses.

## Tweezers



#### SÜDA EXPERT SPLITTER TWEEZERS

2121.50 Length: 10 cm

2121.51 Length: 11.5 cm

Splinter tweezers with precisely ground gripping edges for very precise treatment. Ideal for removing foreign bodies from skin or wounds.



#### SÜDA EXPERT TWEEZERS

2121.52 Length: 9.5 cm

Tweezers with wide, bevelled tip. For gently plucking eyebrows and facial hair. Grips even the finest hairs.

## Scissors



#### SÜDA EXPERT NAIL SCISSORS CURVED

2121.54 Length: 10 cm

Sturdy nail scissors with finely curved cutting edge. For shortening nails with precision.



#### SÜDA EXPERT CUTICLE SCISSORS CURVED

2121.55 Length: 10 cm

Ergonomic cuticle scissors with curved cutting surface. For precisely removing protruding cuticles and small skin particles.



#### SÜDA EXPERT CUTICLE SCISSORS TOWER PEAK

2121.56 Length: 10 cm

Ergonomic cuticle scissors with extra slim cutting surface and tower tip for particularly precise work. Ideal for difficult work on the cuticle or skin.

## SÜDA Expert Instrument set

Basic set with all the important instruments you will need to equip you for your daily work. Quality products made from non-rust, German stainless steel.

#### SÜDA EXPERT INSTRUMENT SET

7099.6 Set price

Price-saving compared to buying instruments separately

#### SCOPE OF DELIVERY

2121.20 SÜDA Expert head cutter standard, 14 cm

2121.28 SÜDA Expert corner clippers standard, 13 cm

2121.42 SÜDA Expert skin clippers, 10 cm

2121.45 SÜDA Expert double probe, 17 cm

2121.50 SÜDA Expert splitter tweezers, 8 cm

2169 Scalpel holder no. 3

2167.10 CARE MORE scalpel blades figure 10, 100 pieces

2172.1 Blade extractor Scalpel-Ex

2196.5 SÜDA Instrument Care Oil, 12 ml



# General application and safety instructions for using SÜDA Expert foot care instruments

## Scope

The general instructions for use and safety listed here apply to all SÜDA Expert foot care instruments and must always be observed.

## Basic remarks

Please observe the legal regulations for the reconditioning of medical devices applicable in your country. The recommendations of the Robert Koch Institute on reconditioning and the red brochure of the Instrument Reconditioning Working Group are important bases for this. The reconditioner is responsible for ensuring that the reconditioning actually carried out with the equipment, materials and personnel used in the reconditioning facility achieves the desired results for the intended application.

## Proper use

- Take care to use only technically and hygienically flawless, cleaned instruments. Please follow the instructions below for proper use:
- All SÜDA Expert instruments are supplied in non-sterile form. They must be prepared according to the instructions before the first application and each subsequent use.
- Inspect the instruments for damage before and after use.
- Ensure that the instruments are used exclusively for their intended purpose.
- Treat the instruments with care. Make sure that the instruments are never overused, misused or dropped.
- Do not use corrosive cleaning agents, abrasive cleaners or hard bristle brushes to clean the instruments.
- Do not leave the instruments in the cleaning or disinfecting solution for a longer period of time (overnight).
- Clean the instruments in cold water immediately after use.
- If necessary, apply a suitable instrument oil after drying.
- Improper use leads to poor work results and possibly to injuries.
- Excessively heating the instruments can cause discolouration of the material. Do not heat the instruments above 137 °C.

## Restrictions when reconditioning

Proper reconditioning according to the manufacturer's instructions has only a minimal effect on the service life of the instruments. The end of the product's life depends on instrument wear and use. We recommend revising or renewing the products after 25 reconditioning cycles.

## Instructions for reconditioning and storage

It is recommended that instruments are reconditioned as soon as possible after use. Storing used instruments contaminated with body fluids can lead to corrosion damage. To ensure the instruments are sterile, we recommend using the machine validated procedure for reconditioning. Make sure to store only dry instruments.

## Disinfection and cleaning

### Manual disinfection and cleaning

In principle, machine disinfection and cleaning is recommended. If the required equipment is not available, please follow the instructions below for manual disinfection and cleaning:

- Use only CE-marked or validated cleaning-disinfectors and low-foaming, non-ionising cleaning-disinfectors. You can find the concentration and suitability of the respective agents in the manufacturer's instructions.
- Only disassemble instruments that are explicitly marked for disassembly before reconditioning. If disassembly is required, instructions are included with the product.
- Place the opened instruments in a suitable sieve tray or on the loading carrier in the disinfection bath in such a way that all internal and external surfaces of the instruments are cleaned and disinfected.
- Place heavy instruments carefully in the lower area of the container, taking into account the specified maximum load.
- Place the instruments with concave surfaces facing downwards to avoid puddles of water.

For validating manual cleaning, the following process steps were carried out:

- The instruments were first immersed in a lukewarm detergent bath (0.5 % solution, max. 45 °C, ideally between 28 and 30 °C for 10 minutes). This step softens and loosens much of the dirt that may have dried on the instrument between use and the start of cleaning.
- Brushing was done for 10 s under the surface of the water using brush strokes away from the body to avoid creating spray from the brush. The instrument should only be removed from the soaking bath to check whether it is clean.
- The instrument was then rinsed with 1 l of distilled water. Use only distilled water for rinsing. Water containing chloride can cause damage to the instruments. If dirt that is difficult to remove remains on the instrument, another soaking followed by brushing and rinsing must be carried out. Clean cleaning solutions must be used for each cycle to ensure that

dirt removed from one instrument is not deposited on the next and there is a risk of cross-infection. The temperature of the rinse water should be between 21 and 22.5 °C.

- The drying time was 30 minutes.

#### Machine disinfection and cleaning

For validating mechanical disinfection and cleaning, a thermal disinfection process was used with the aid of a single-chamber cleaning-disinfector (Uniclean PL-II 15-2 EL). The charging baskets were inserted into the cleaning-disinfector. The instruments were placed in the baskets as follows:

- The instruments were placed in the mesh trays
- The lids of the mesh trays were closed
- The mesh trays were inserted into the lower compartment of the basket

Cleaning programme: Shortened Vario TD programme

- Deionised water at 90°C for 5 minutes was used as disinfectant

#### Check and test

- Check whether the instruments are dry and dry them with medical compressed air if necessary.
- Visually inspect the cleaned instruments to see whether they are clean. In the case of visible soiling, reclean manually and recondition again mechanically.
- Visually inspect the cleaned instruments for integrity and functionality. Take care as the cutting edges are sharp, ensure whether the cutting edges can be properly guided together and are easy to close and release, that there is no play between the cutting edges, that no components are bent and that the components are joined together as intended.
- Sort out damaged instruments.

#### Packaging

- Instruments that can be dismantled must be assembled.
- Package the instruments according to standards for sterile use.

#### Sterilisation

- Always follow the machine manufacturer's specifications, taking into account the specified maximum load.
- Ensure that the instruments are completely dried and wrapped before sterilisation.

A medium-sized autoclave (Selectomat PL / 669-2 CL) was used to validate the sterilisation process. The instruments were packaged in sterile barrier systems. The units were sterilised in a half cycle with the following parameters:

- Cycle type: Dynamic venting (3 pulses)
- Sterilisation temperature: 134 °C
- Sterilisation time: 2.5 minutes (= half cycle of a 5-minute process)
- Drying time: 30 minutes

#### Storage

- Make sure that the instruments are completely dry before storing them.
- Store them protected from dust and moisture at the least.

#### Product liability

Any damage caused by failure to comply with the instructions for use will result in the exclusion of liability by IONTO Health & Beauty GmbH. This is especially the case if the user misuses the instruments. Complaints about the instruments must be made in writing no later than one week after receipt of the goods by the client. All later complaints cannot be accepted. IONTO Health & Beauty GmbH reserves the right to inspect the claimed material and to replace it if necessary. Sorting out worn and damaged instruments. If your instruments are worn out, you can send them to us for reconditioning. You can find our grinding and repair order for this on the homepage (<http://www.ihb-gruppe.de/Kontakt/Kundenservice>). Please send only complete instruments. The cutting edges must not be broken. Send only cleaned and sterile products for reconditioning.

# PRODUCT LINES

---

# SÜDA CARE

## Foot care products



SÜDA CARE offers professionals innovative natural foot care products with effective, pampering ingredients that give their clients an exceptional foot care experience.

Our SÜDA CARE products meet the highest qualitative standards because we use high-quality ingredients in effective formulations. We focus exclusively on skin-friendly substances with a special emphasis on natural ingredients..

With our range of products we support professionals to achieve beautiful and healthy feet and help to improve their clients' quality of life. In this way, we are contributing to strengthening awareness for good foot care.





# Product lines



## EVERYDAY

Daily care: The Everyday line, specially designed for taking daily care of your feet, contains a wide range of products for different skin types and their needs.



## SPECIAL

Medical care: The Special line offers effective products for treating special nail and skin problems.



## DIABETICS

Diabetic care: Adapted to the special needs of diabetic patients, the Diabetics series provides gentle care and mild cleansing.



## NATURE

Mindful care: The products of the Nature line provide a special fragrance and sensory experience and enable moments of calm in hectic everyday life.

The skin is the body's largest organ and protects us from harmful external influences. Due to the influence of various factors such as age, pollution, stress or hormonal balance, our skin becomes sensitive or weak and loses its natural balance.

SÜDA CARE offers products made with high quality botanical and sustainable ingredients to improve the skin's natural balance.

**Note:**

SÜDA CARE Product brochure available  
(Article 1800.B049)

SÜDA recommends





# Well-being and care of the natural beauty and aesthetics

Your cosmetics and wellness partner.

INFO@IONTO.DE  
IONTO.DE

SÜDA recommends

CARE  
MORE

Professional products  
by CARE MORE

Order service & online shop  
Products

T +49 (0) 721 / 9770 909  
F +49 (0) 721 / 9770 890

caremore.de  
sales@caremore.de



## BASIC



## CLEAN



## FOOT



## BEAUTY



## WELLNESS



## NAILS





# Imprint

## **PUBLISHED BY**

---

IONTO Health & Beauty GmbH  
Greschbachstraße 3  
76229 Karlsruhe

## **WARRANTY**

---

- Warranty up to 24 months, excluding consumables, wear items and accessories.
- The warranty covers material and labour, not transport and travel costs.

## **PICTURE CREDITS**

---

**IONTO Health & Beauty GmbH;**

**Shutterstock:**

Cover picture, p. 19, 20, 94

**Unsplash:** p. 140

**AdobeStock:** p. 15

**following pages:** @3darcastudio;

@puhhha; @Jacob Lund;

@Daisy Daisy; @industrieblick; @Prostock-Studio

**iStock:** p. 16

**Other:** @B-LINE; @daylight company; pp. 248-249 @Enbio

## **LIABILITY NOTICE**

---

Despite careful checking of the content, we accept no liability for errors or misprints. Illustrations may differ.



# SÜDA CARE

Quality requires a solid base.

**EVERYDAY**  
FOR FEEL GOOD FEET



**NATURE**  
FOR MINDFUL MOMENTS



SÜDA –  
Your partner for podiatry and foot care

[sales@sueda.de](mailto:sales@sueda.de)  
[sueda.de](https://sueda.de)